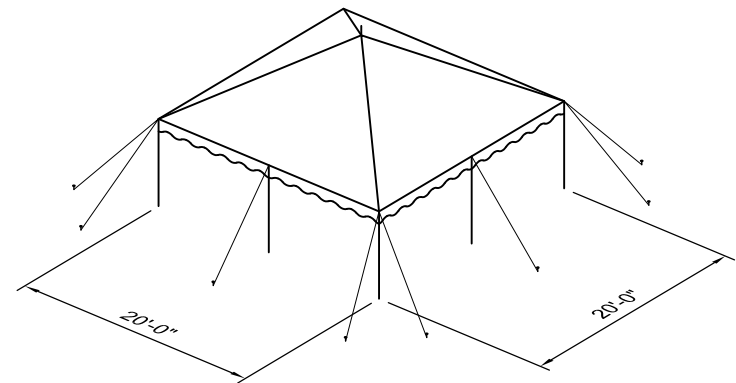
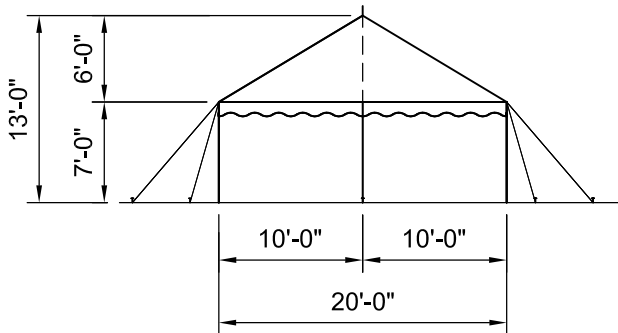


PLAN VIEW

A 400 SQ. FT.



3D VIEW



END ELEVATION

NOTES:

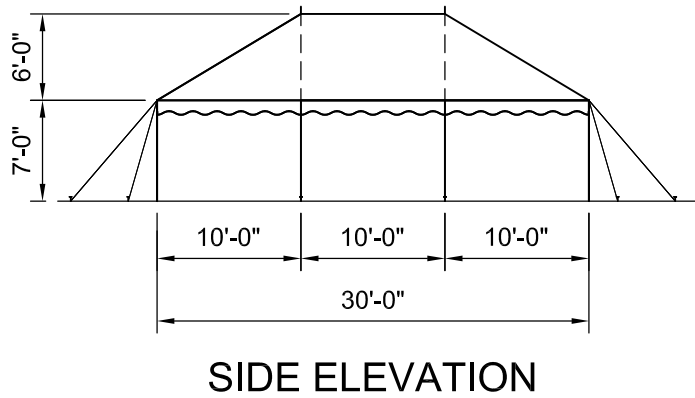
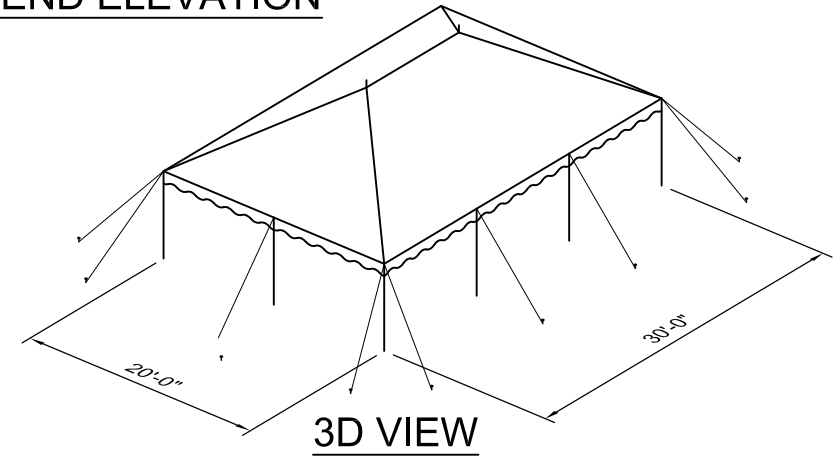
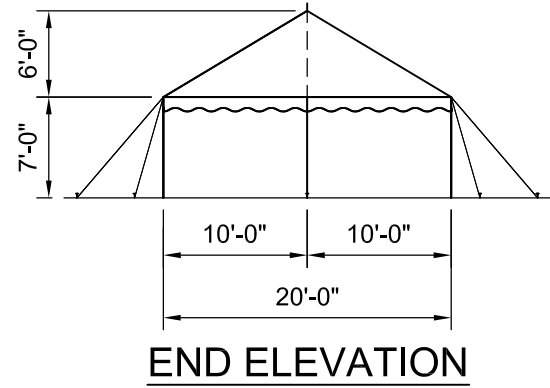
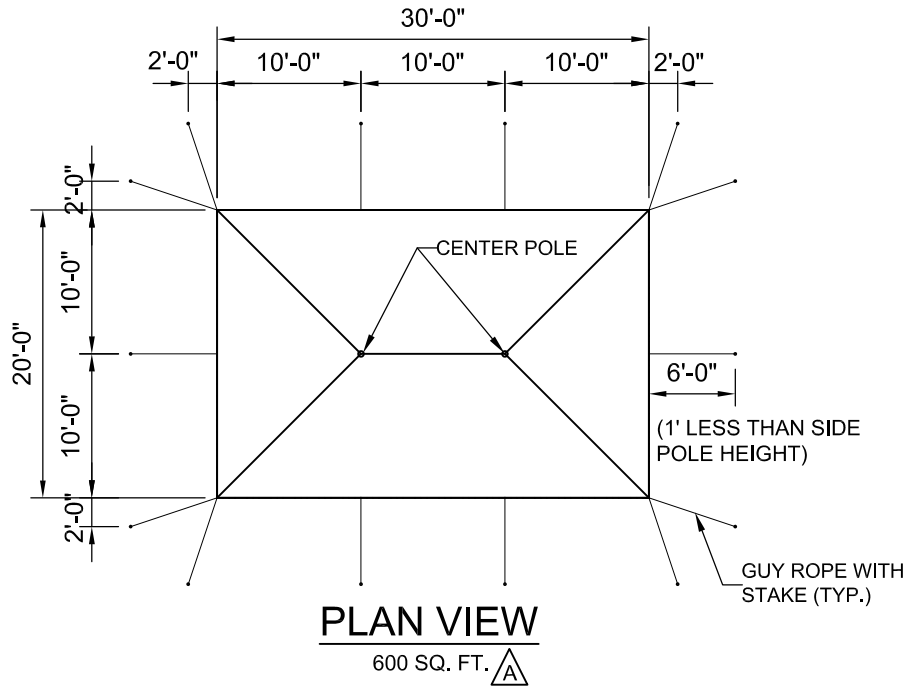
- SEE THE IFAI STAKING GUIDE ON OUR WEBSITE (WWW.ANCHORINC.COM) FOR SOIL IDENTIFICATION AND PULL-OUT CAPACITY OF STAKES.

Caution:

Staking or anchoring is the responsibility of the installer. Soil conditions will dictate the number of stakes or anchors required. **Do not use this drawing to determine staking requirements.** Contact Anchor for Engineering loading data that can be used in conjunction with IFAI methodologies to determine site specific anchoring requirements.

A

ITEM DESCRIPTION		ITEM NO.												
		<small>All data and information contained in or disclosed by this document is confidential and proprietary information of Anchor Industries, Inc. and all rights therein are expressly reserved. By accepting this material the recipient agrees that this material and the information contained therein is held in confidence and in trust and will not be used, copied, reproduced in the whole or in part, nor its contents revealed in any manner to others except to meet the specific purpose for which it was delivered.</small>												
<p>PARTY MATE 20' x 20'</p> <p>SCHEMATIC</p>														
DRAWN BY:	DMK	CHECKED BY:												
APPROVED BY:	EC#	DATE:												
<table border="1"> <thead> <tr> <th>A</th> <th>EC</th> <th>DATE</th> <th>DMK</th> </tr> <tr> <th>REV</th> <th>EC</th> <th>DATE</th> <th>BY</th> </tr> </thead> <tbody> <tr> <td></td> <td></td> <td>3/22/2016</td> <td>DMK</td> </tr> </tbody> </table>		A	EC	DATE	DMK	REV	EC	DATE	BY			3/22/2016	DMK	DRAWING NO.
A	EC	DATE	DMK											
REV	EC	DATE	BY											
		3/22/2016	DMK											
<p style="text-align: center;">REVISION HISTORY</p>		<p>10-26-12</p> <p style="text-align: right;">12-369-3</p>												



Caution:

Staking or anchoring is the responsibility of the installer. Soil conditions will dictate the number of stakes or anchors required. **Do not use this drawing to determine staking requirements.** Contact Anchor for Engineering loading data that can be used in conjunction with IFAI methodologies to determine site specific anchoring requirements.

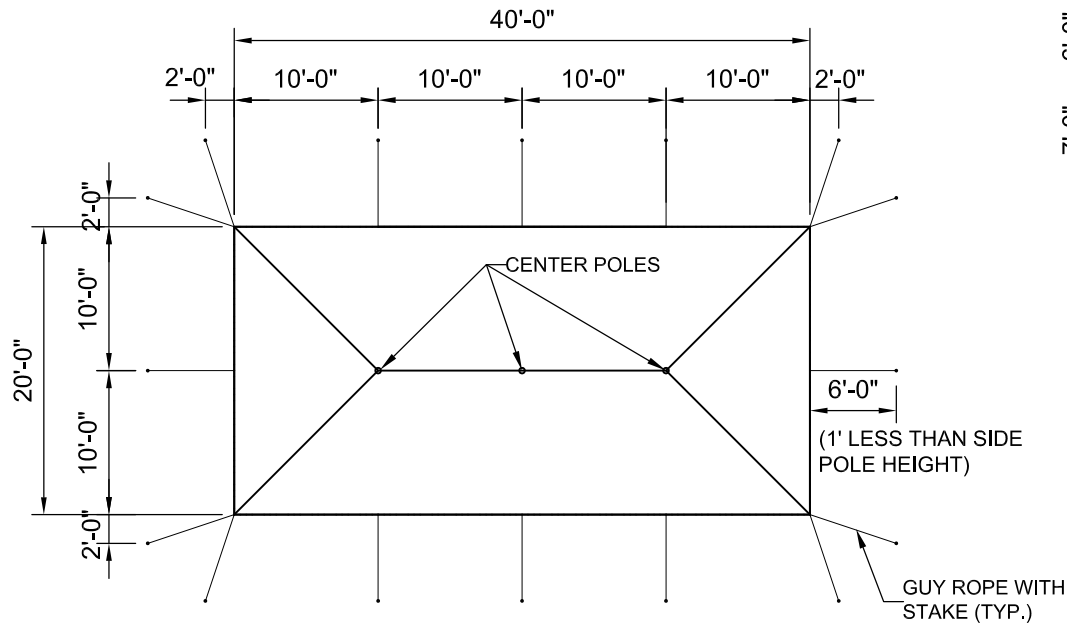


NOTES:

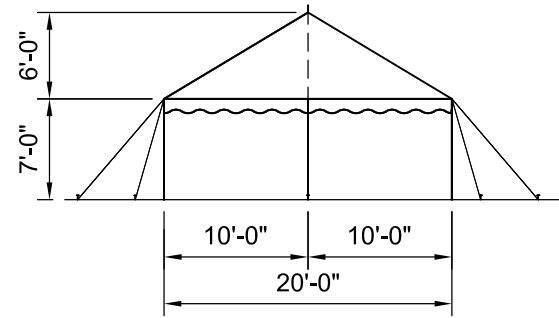
- SEE THE IFAI STAKING GUIDE ON OUR WEBSITE (WWW.ANCHORINC.COM) FOR SOIL IDENTIFICATION AND PULL-OUT CAPACITY OF STAKES.

A		3/22/2016	DMK
REV	EC	DATE	BY
REVISION HISTORY			

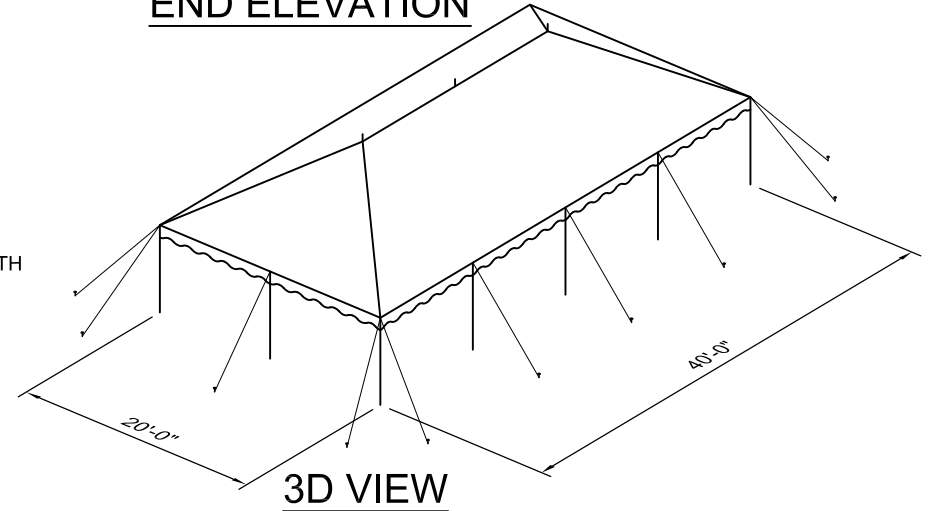
ITEM DESCRIPTION		ITEM NO.
		<small>All data and information contained in or disclosed by this document is confidential and proprietary information of Anchor Industries, Inc. and all rights therein are expressly reserved. By accepting this material the recipient agrees that this material and the information contained therein is held in confidence and in trust and will not be used, copied, reproduced in the whole or in part, nor its contents revealed in any manner to others except to meet the specific purpose for which it was delivered.</small>
		PARTY MATE 20' x 30'
SCHEMATIC		
DRAWN BY:	DMK	CHECKED BY:
APPROVED BY:	EC#	DATE:
		10-26-12
		DRAWING NO.
		12-369-4



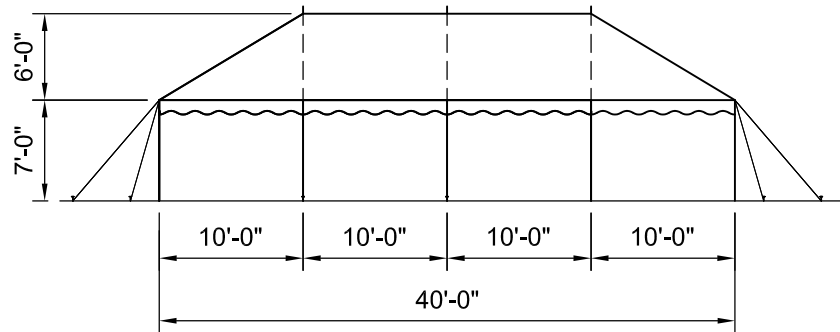
PLAN VIEW
800 SQ. FT. A



END ELEVATION



3D VIEW



SIDE ELEVATION

NOTES:

- SEE THE IFAI STAKING GUIDE ON OUR WEBSITE (WWW.ANCHORINC.COM) FOR SOIL IDENTIFICATION AND PULL-OUT CAPACITY OF STAKES.

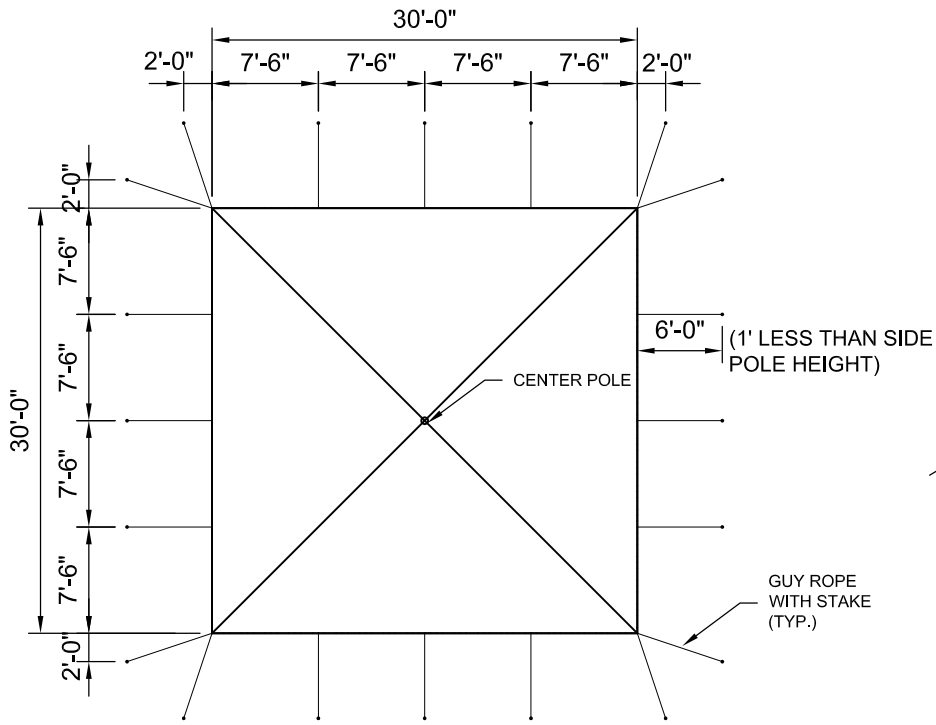
Caution:

Staking or anchoring is the responsibility of the installer. Soil conditions will dictate the number of stakes or anchors required. **Do not use this drawing to determine staking requirements.** Contact Anchor for Engineering loading data that can be used in conjunction with IFAI methodologies to determine site specific anchoring requirements.



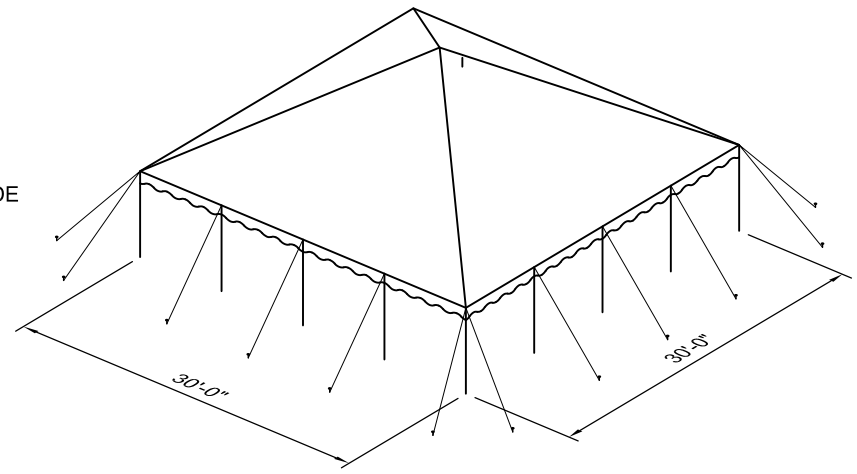
ITEM DESCRIPTION		ITEM NO.
		All data and information contained in or disclosed by this document is confidential and proprietary information of Anchor Industries, Inc. and all rights therein are expressly reserved. By accepting this material the recipient agrees that this material and the information contained therein is held in confidence and in trust and will not be used, copied, reproduced in the whole or in part, nor its contents revealed in any manner except to meet the specific purpose for which it was delivered.
PARTY MATE 20' x 40'		
SCHEMATIC		
DRAWN BY:	DMK	CHECKED BY:
APPROVED BY:	EC#	DATE:
		10-26-12
		DRAWING NO. 12-369-5

A		3/22/2016	DMK
REV	EC	DATE	BY
REVISION HISTORY			

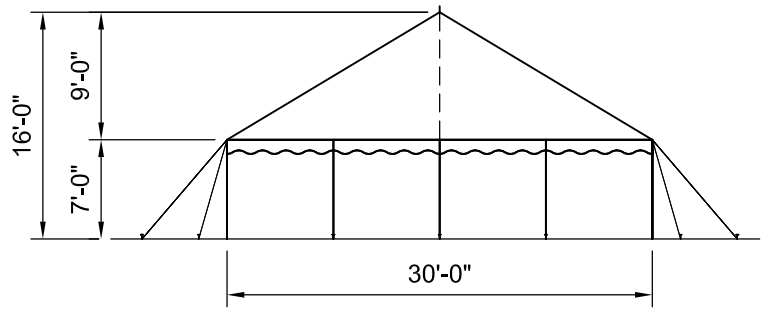


PLAN VIEW

900 SQ. FT. A



3D VIEW



END ELEVATION

NOTES:

- SEE THE IFAI STAKING GUIDE ON OUR WEBSITE (WWW.ANCHORINC.COM) FOR SOIL IDENTIFICATION AND PULL-OUT CAPACITY OF STAKES.

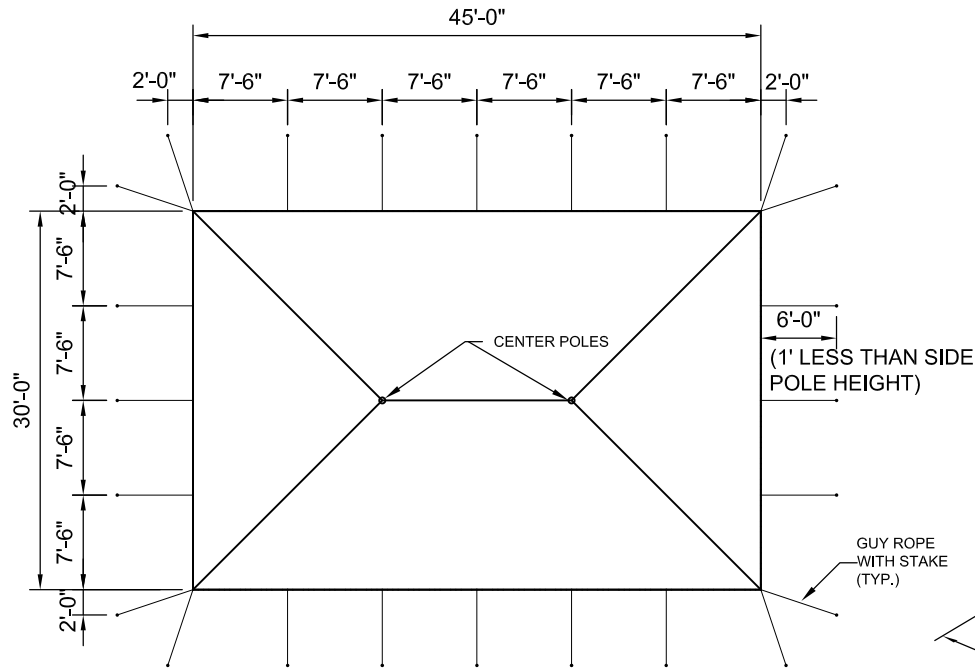
Caution:
Staking or anchoring is the responsibility of the installer. Soil conditions will dictate the number of stakes or anchors required. **Do not use this drawing to determine staking requirements.** Contact Anchor for Engineering loading data that can be used in conjunction with IFAI methodologies to determine site specific anchoring requirements.

A

ITEM DESCRIPTION		ITEM NO.
		<small>All data and information contained in or disclosed by this document is confidential and proprietary information of Anchor Industries, Inc. and all rights therein are expressly reserved. By accepting this material the recipient agrees that this material and the information contained therein is held in confidence and in trust and will not be used, copied, reproduced in the whole or in part, nor its contents revealed in any manner to others except to meet the specific purpose for which it was delivered.</small>
PARTY MATE 30' x 30'		
SCHEMATIC		
DRAWN BY:	DMK	CHECKED BY:
APPROVED BY:	EC#	DATE:
		07-06-12
		DRAWING NO. 12-369-1

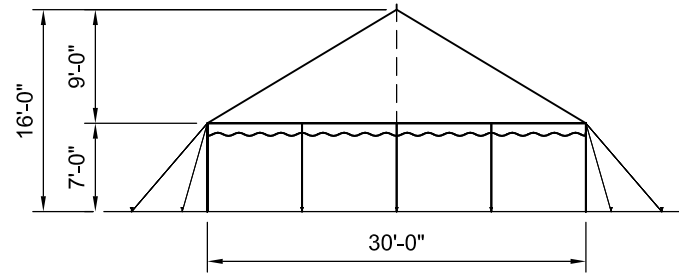
REV	EC	DATE	BY
A		3/22/2016	DMK

REVISION HISTORY

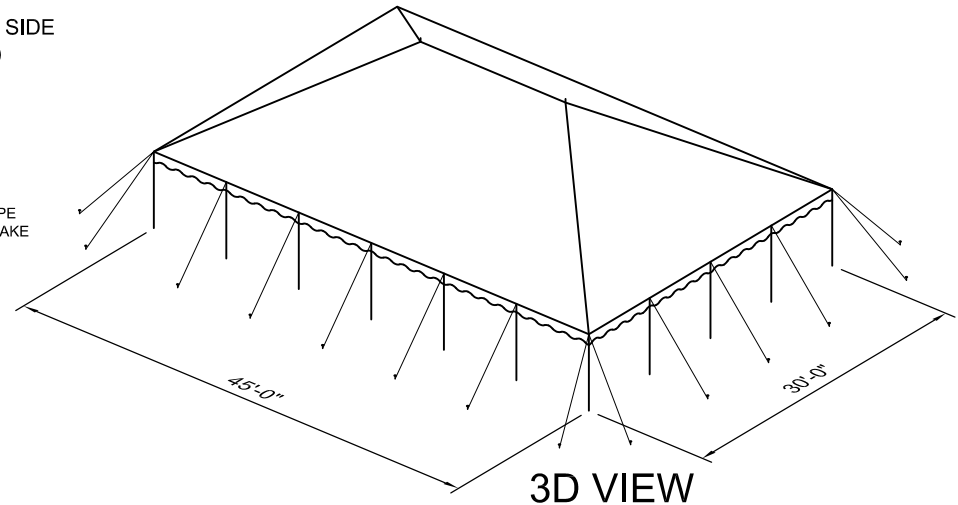


PLAN VIEW

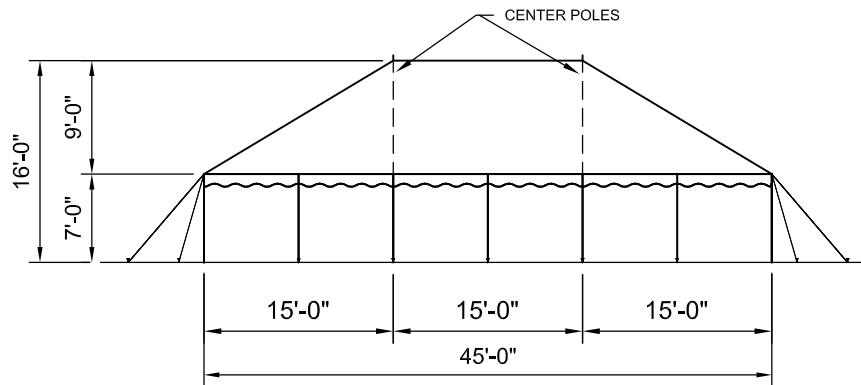
A 1350 SQ. FT.



END ELEVATION



3D VIEW



SIDE ELEVATION

Caution:

Staking or anchoring is the responsibility of the installer. Soil conditions will dictate the number of stakes or anchors required. **Do not use this drawing to determine staking requirements.** Contact Anchor for Engineering loading data that can be used in conjunction with IFAI methodologies to determine site specific anchoring requirements.



NOTES:

- SEE THE IFAI STAKING GUIDE ON OUR WEBSITE (WWW.ANCHORINC.COM) FOR SOIL IDENTIFICATION AND PULL-OUT CAPACITY OF STAKES.

A		3/22/2016	DMK
REV	EC	DATE	BY
REVISION HISTORY			

ITEM DESCRIPTION		ITEM NO.
		<small>All data and information contained in or disclosed by this document is confidential and proprietary information of Anchor Industries, Inc. and all rights therein are expressly reserved. By accepting this material the recipient agrees that this material and the information contained therein is held in confidence and in trust and will not be used, copied, reproduced in the whole or in part, nor its contents revealed in any manner to others except to meet the specific purpose for which it was delivered.</small>
PARTY MATE 30' x 45'		
SCHEMATIC		
DRAWN BY:	DMK	CHECKED BY:
APPROVED BY:	EC#	DATE: 07-06-12
		DRAWING NO. 12-369-2