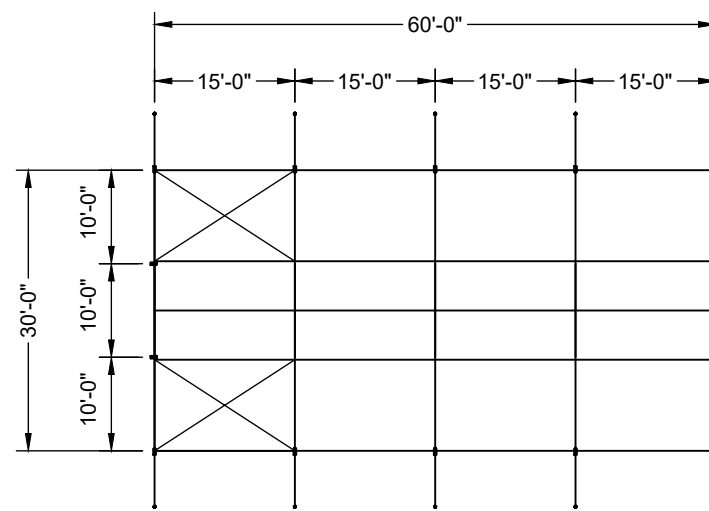
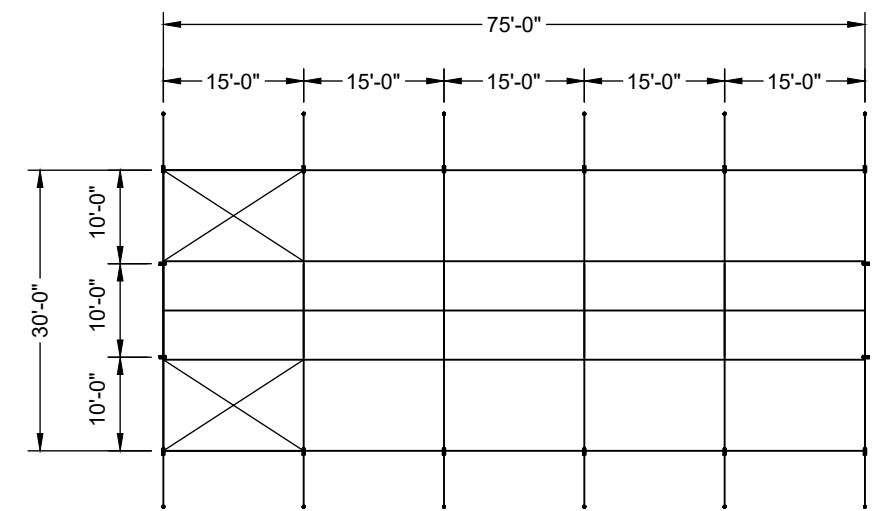


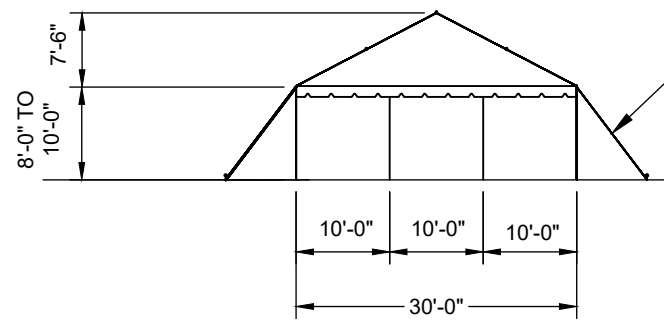
PLAN
1,200 SQ. FT.
GABLE ENDS WITH (4) 10' MID BAYS



PLAN
1,800 SQ. FT.
GABLE ENDS WITH (4) 15' MID BAYS

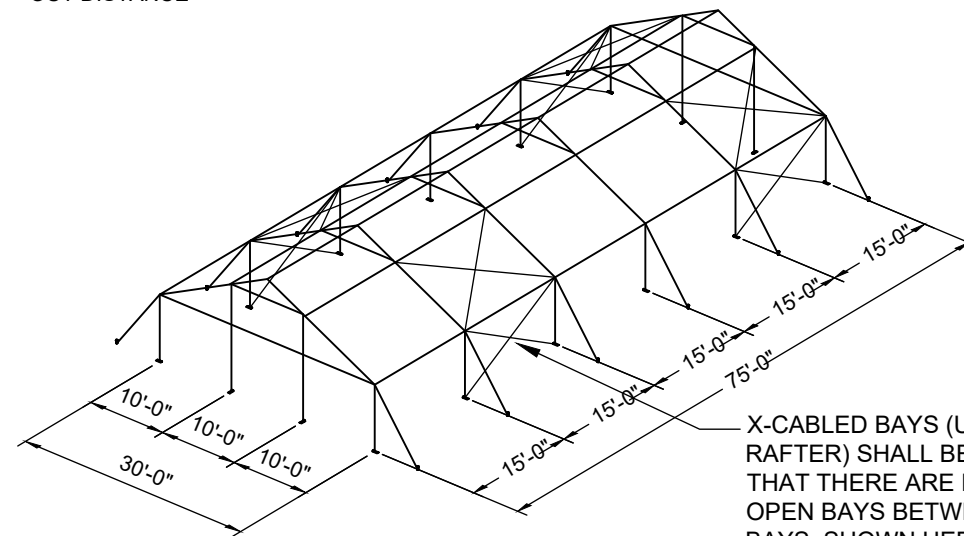


PLAN
2,250 SQ. FT.
GABLE ENDS WITH (5) 15' MID BAYS



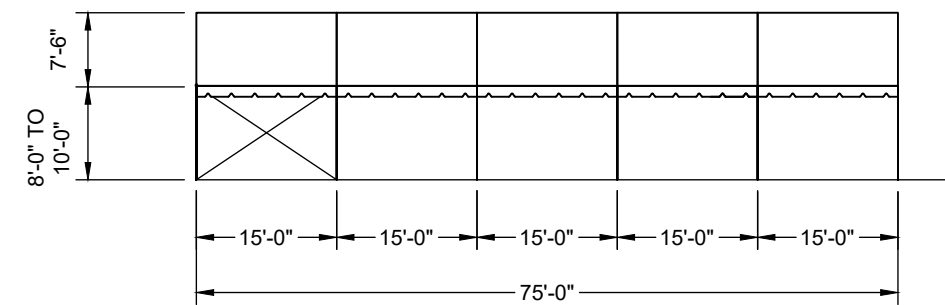
END ELEVATION

SEE NOTE 2 FOR STAKE
OUT DISTANCE

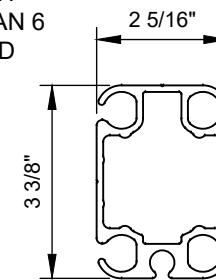


3-D VIEW
GABLE ENDS WITH (5)
15' MID BAYS

X-CABLED BAYS (UPRIGHT &
RAFTER) SHALL BE ADDED SUCH
THAT THERE ARE NO MORE THAN 6
OPEN BAYS BETWEEN X-CABLED
BAYS. SHOWN HERE ONLY FOR
CLARITY.



SIDE ELEVATION
(WITH 15'-0" MID BAYS SHOWN)



**CROSS SECTION OF
ALUMINUM BEAM**

NOTES:


- SEE THE I.F.A.I. STAKING GUIDE ON THEIR WEBSITE (WWW.IFAI.COM) FOR SOIL IDENTIFICATION & PULL-OUT CAPACITY OF STAKES.
- STAKING :
8' EAVE - STAKE OUT 6'
9' EAVE - STAKE OUT 6'-9"
10' EAVE - STAKE OUT 7'-6"

Caution:

Staking or anchoring is the responsibility of the installer. Soil conditions will dictate the number of stakes or anchors required. **Do not use this drawing to determine staking requirements.** Contact Anchor for Engineering loading data that can be used in conjunction with IFAI methodologies to determine site specific anchoring requirements.

REV	EC	DATE	BY
3	5878	5/10/2022	DMK
2		3/22/2018	DMK
1		2/29/2016	DMK

REVISION HISTORY

ITEM DESCRIPTION	ITEM NO.
 BROCHURE DRAWING 30' NAVI-TRAC LT GABLE END	
DRAWN BY: DMK	CHECKED BY:
APPROVED BY:	DATE: 06-18-14
DRAWING NO. 12-391-4	

All data and information contained in or disclosed by this document is confidential and proprietary information of Anchor Industries, Inc. and all rights therein are expressly reserved. By accepting this material the recipient agrees that this material and the information contained therein is held in confidence and in trust and will not be used, copied, reproduced in the whole or in part, nor its contents revealed in any manner to others except to meet the specific purpose for which it was delivered.