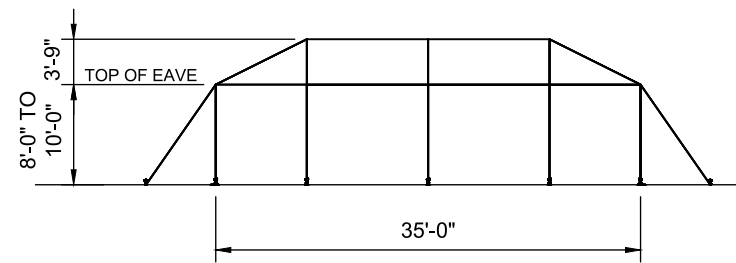
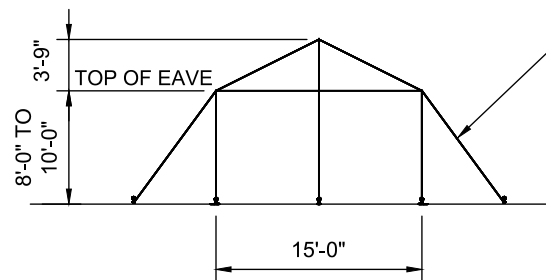


PLAN VIEW

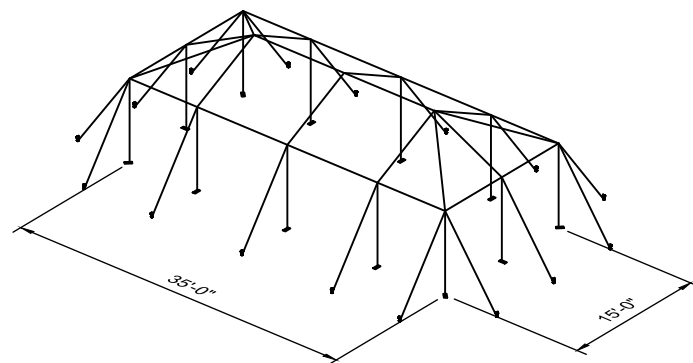
525 SQ. FT.
HIP ENDS WITH (2)
10'-0" BAYS



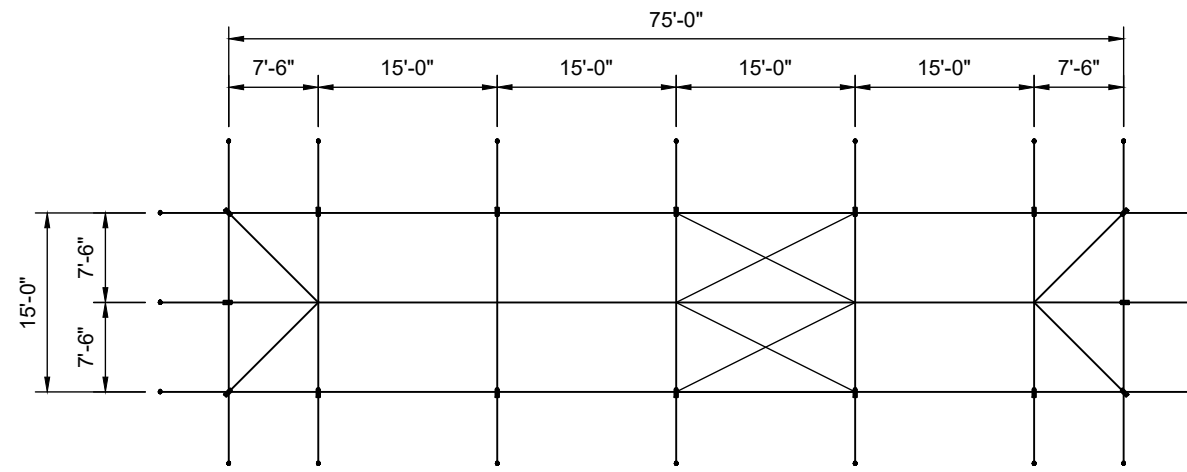
SIDE VIEW



END VIEW

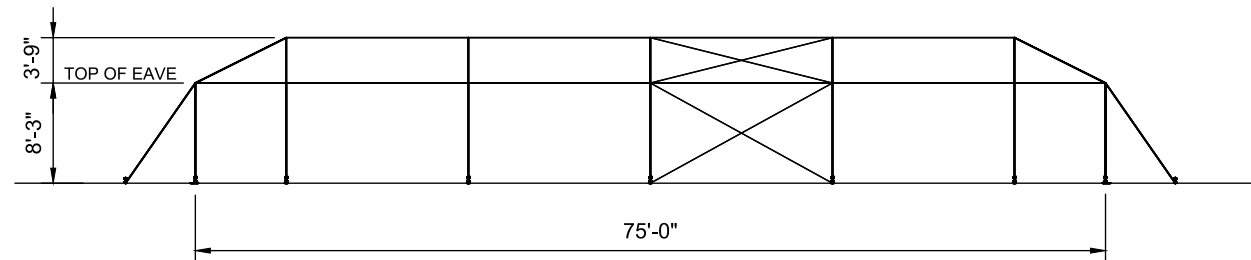


3D VIEW

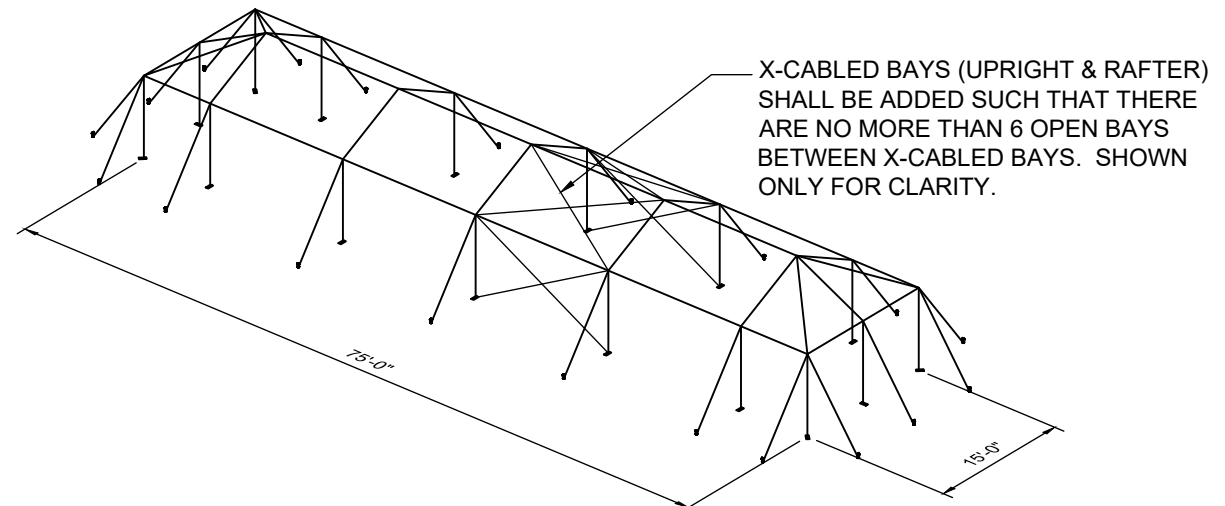


PLAN VIEW

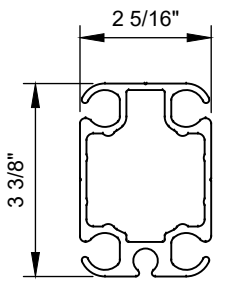
1,125 SQ. FT.
HIP ENDS WITH (4)
15'-0" BAYS



SIDE VIEW



3D VIEW



CROSS SECTION OF ALUMINUM BEAM

Caution:


Staking or anchoring is the responsibility of the installer. Soil conditions will dictate the number of stakes or anchors required. **Do not use this drawing to determine staking requirements.** Contact Anchor for Engineering loading data that can be used in conjunction with IFAI methodologies to determine site specific anchoring requirements.

NOTES:

- SEE THE I.F.A.I. STAKING GUIDE ON THEIR WEBSITE (WWW.IFAI.COM) FOR SOIL IDENTIFICATION & PULL-OUT CAPACITY OF STAKES.
- STAKING :
8' EAVE - STAKE OUT 6'
9' EAVE - STAKE OUT 6'-9"
10' EAVE - STAKE OUT 7'-6"

REV	EC	DATE	BY
1	5878	5/6/2022	DMK

REVISION HISTORY

ITEM DESCRIPTION		ITEM NO.
		
BROCHURE DRAWING		
15' NAVI-TRAC LT HIP END FRAMES		
DRAWN BY:	DMK	CHECKED BY:
APPROVED BY:	EC#	DATE:
		3/21/2018
		DRAWING NO. 18-202-1