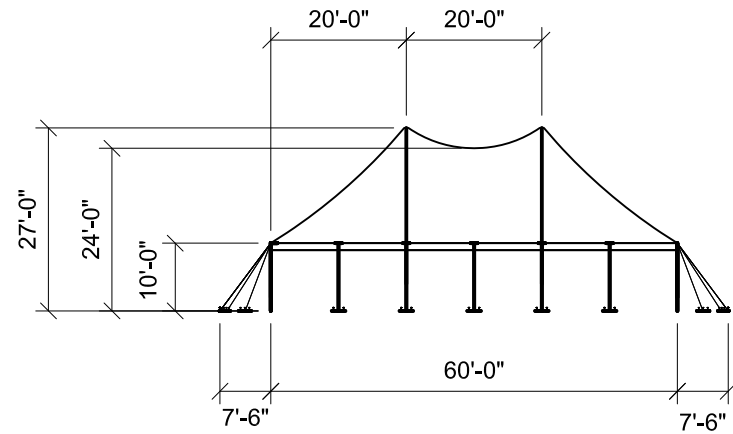
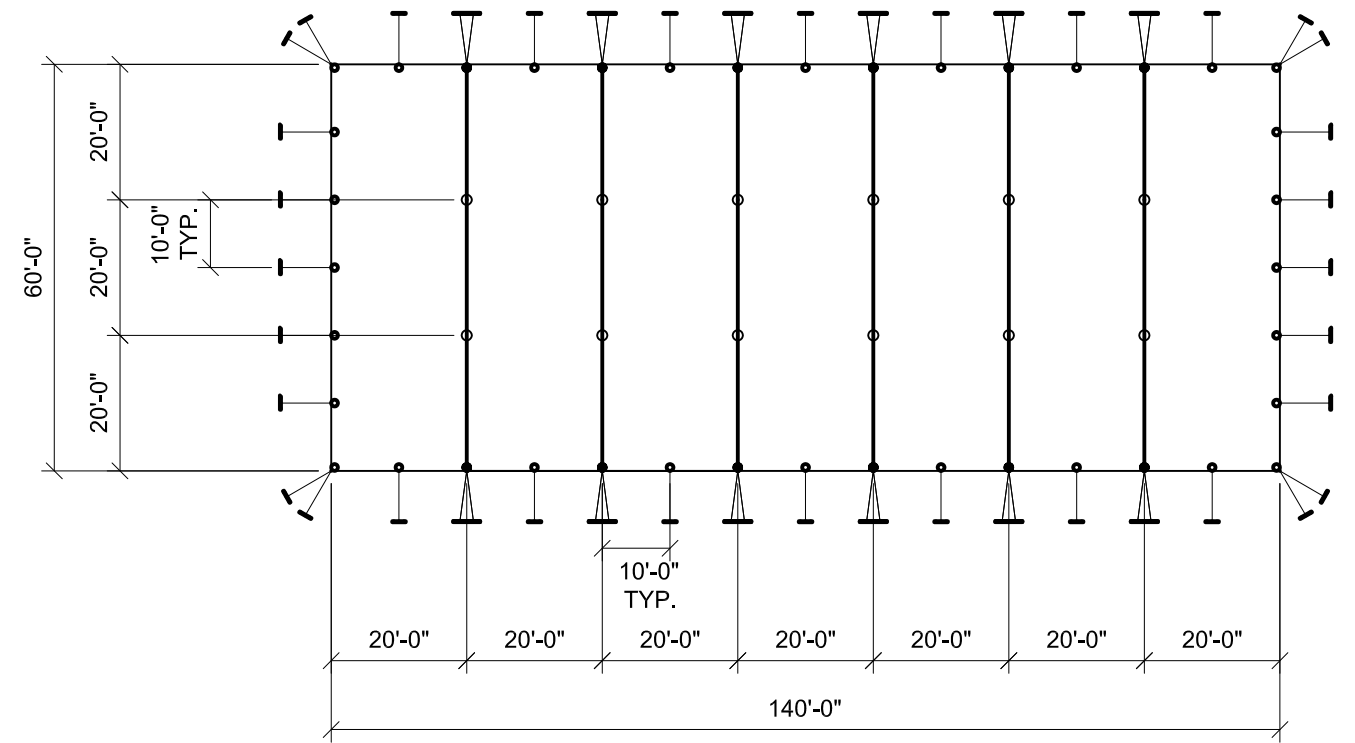


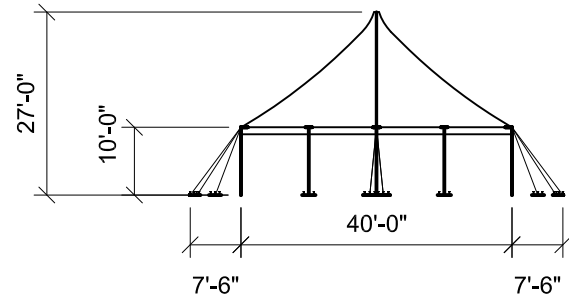
PLAN



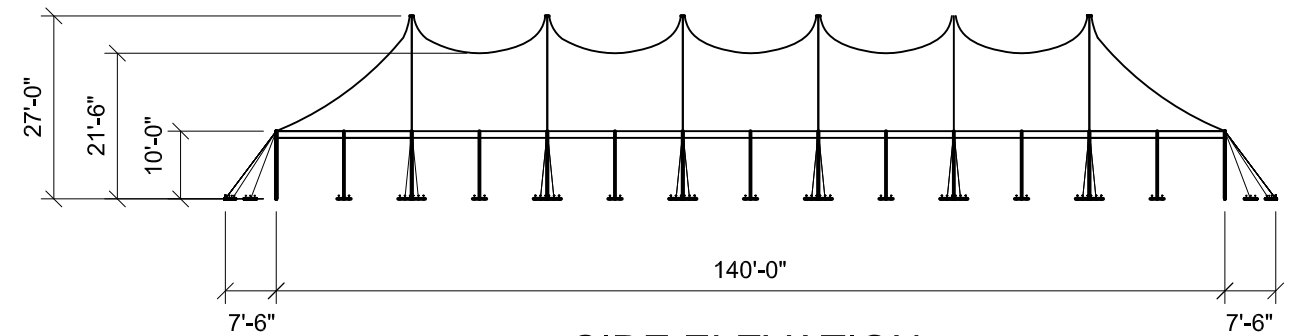
END ELEVATION



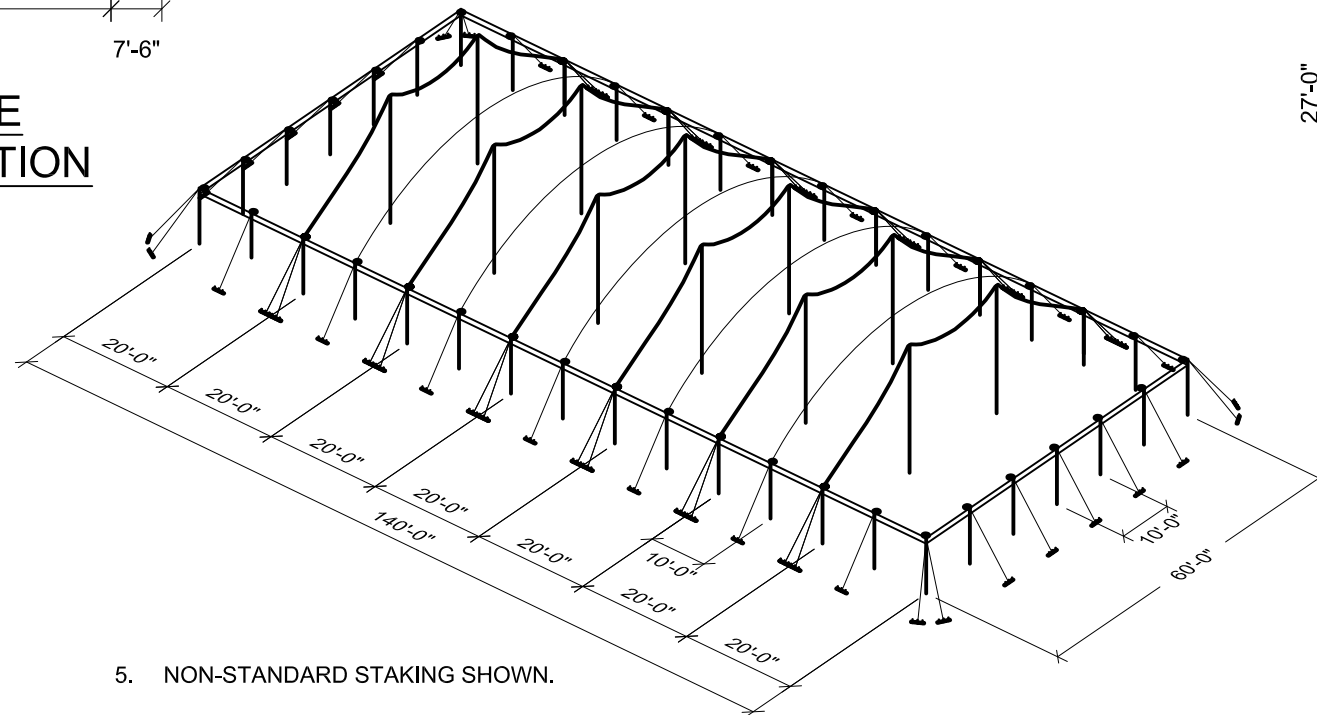
PLAN



SIDE ELEVATION



SIDE ELEVATION



ISOMETRIC

NOTES:

1. GUY WEBS THROUGHOUT.
2. 10'-0" SIDE POLE SPACING.
3. 10'-0" EAVE HEIGHT SHOWN.
4. REF. B2-60-2M REV. 7-31-06.
5. NON-STANDARD STAKING SHOWN.
6. SEE THE I.F.A.I. STAKING GUIDE ON OUR WEBSITE (WWW.ANCHORINC.COM) FOR SOIL IDENTIFICATION & PULL-OUT CAPACITY OF STAKES.

| REVISIONS | | |
|-----------|----------|-----|
| EC/PR NO. | DATE | BY |
| 1 | 05-10-11 | DMK |
| 2 | 09-07-11 | DMK |
| | | |
| | | |
| | | |

| | | |
|--|-------------|-------------------|
| ANCHOR INDUSTRIES INC. | | |
| BROCHURE DRAWING 60' CENTURY TENT WITH 20' MIDS | | |
| DRAWN BY: DMK | CHECKED BY: | DRAWING NO. |
| APPROVED BY: | EC/PR NO. | DATE: 08-18-06 |
| | | 06-253-3-4 |