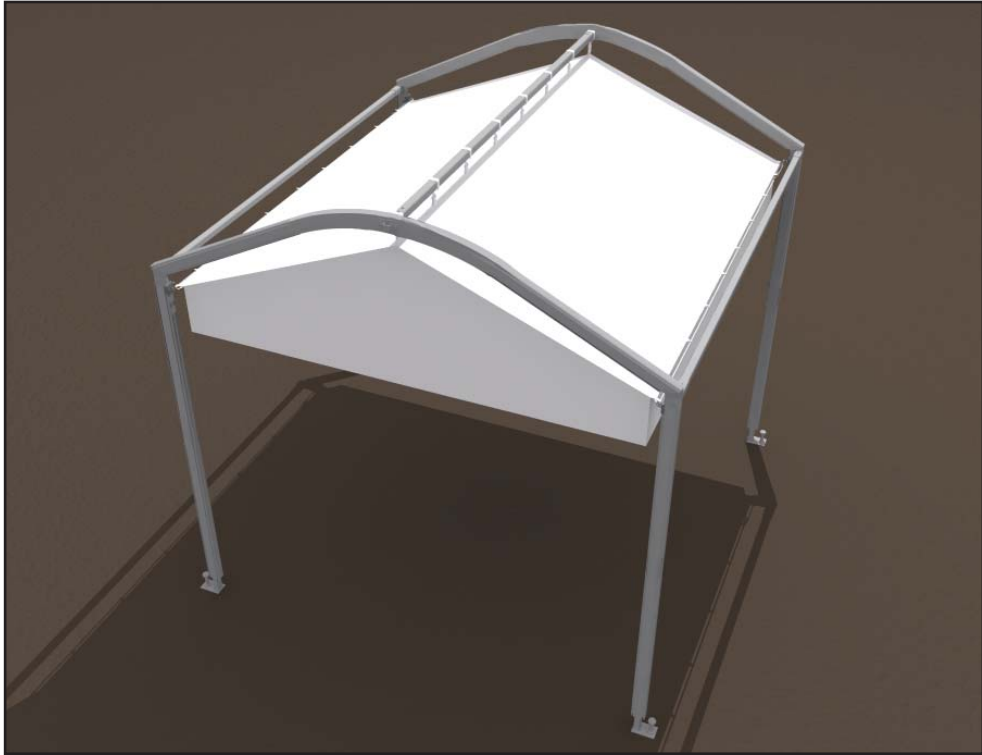


Installation Instructions

Curved Bow Marquee Liner



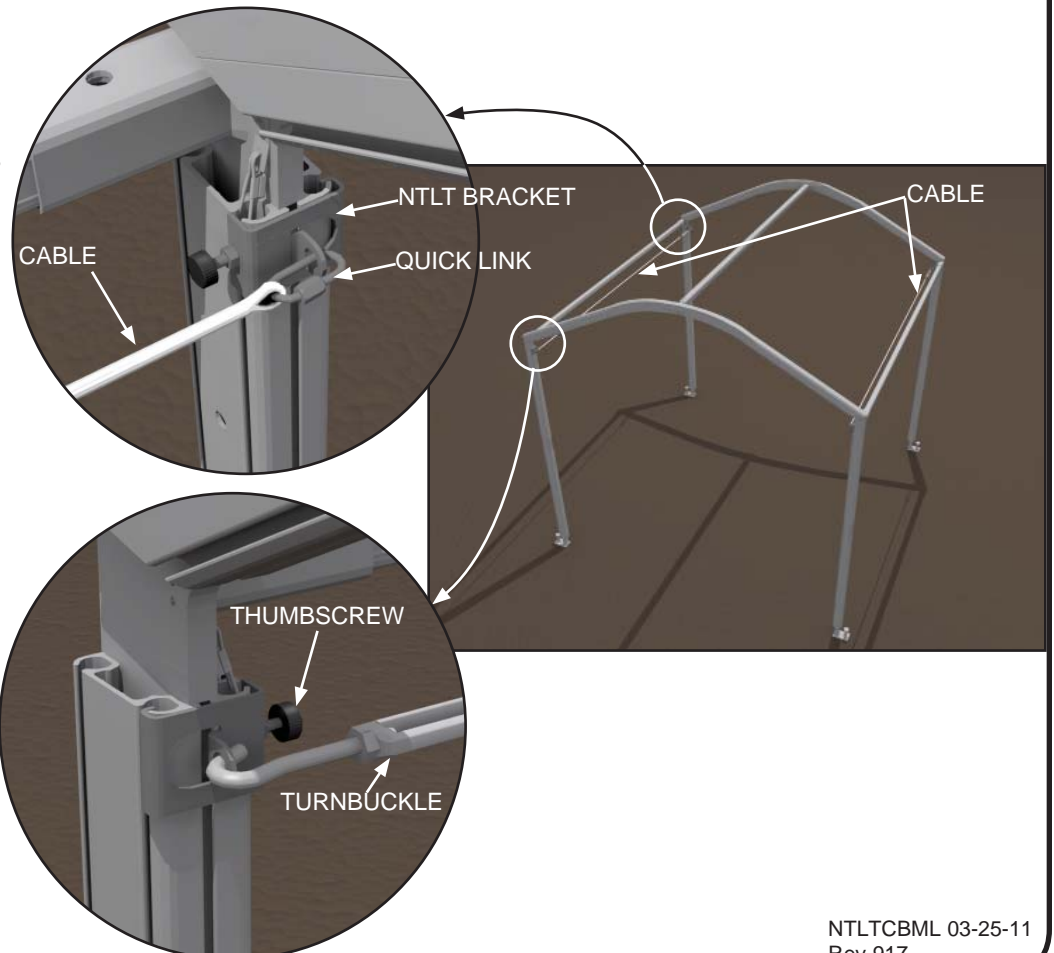
Step 1

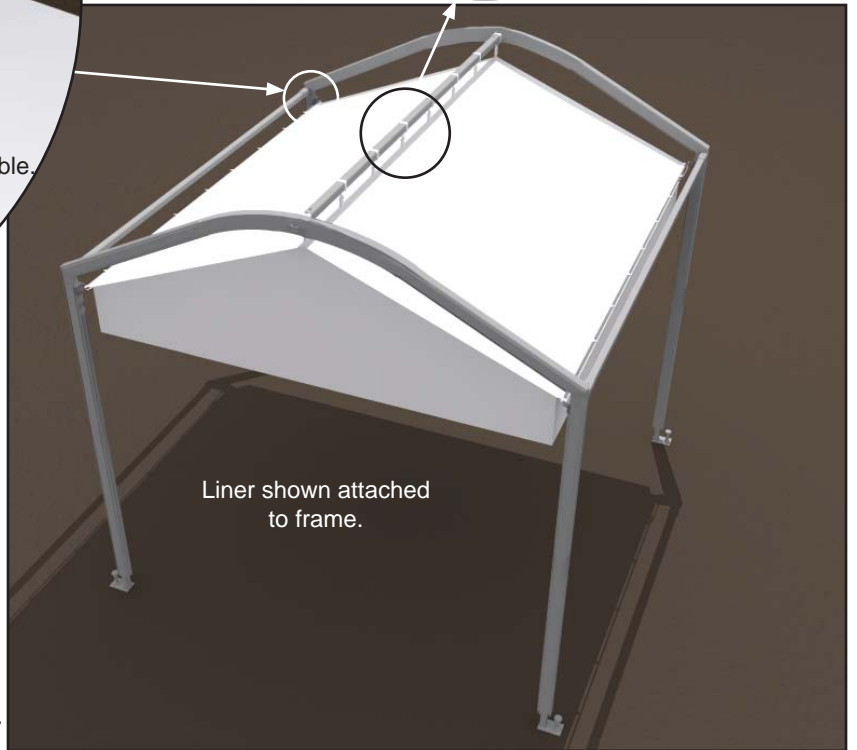
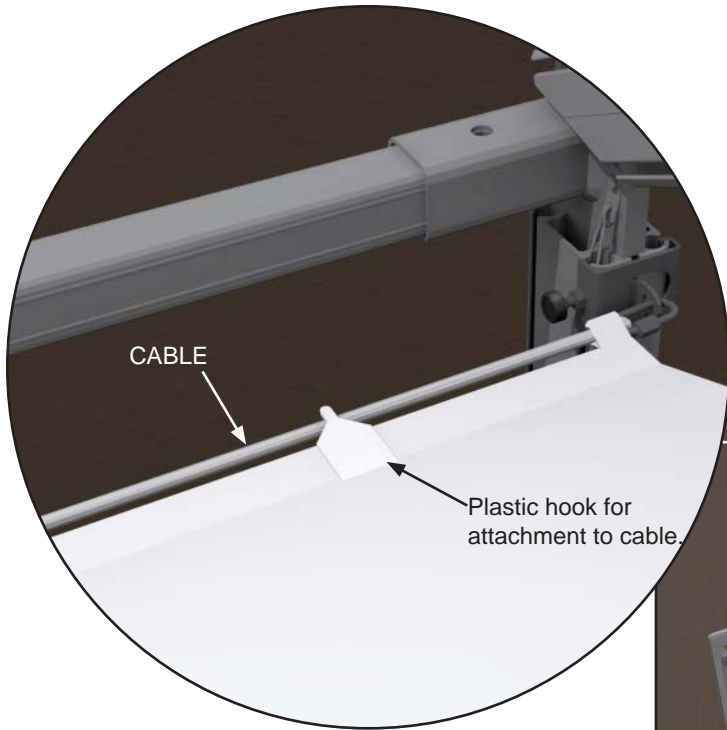
Attach cables to uprights as shown using the NTLT brackets as shown.

Set NTLT bracket as high as possible on upright.

Thumb screw should protrude toward inside of frame.

Tension cable using turnbuckle.





Step 2

Fasten Ridge of liner loosely to ridge purlin on frame.

Step 3

Fasten plastic hooks at eave to cable.

At corners, attach to cable or bracket using the provided corner web loops and wire ties or other (not provided).

Turnbuckles may be re-adjusted at this point if required.

Step 4

Tighten side-release buckles at ridge of liner until liner fits as desired.



Anchor Industries Inc.
 7701 Highway 41 N
 Evansville, IN 47725
 Phone: 812-867-2421
 Fax: 812-867-1429
 1-800-544-4445
 email: tents@anchorinc.com
 www.anchorinc.com