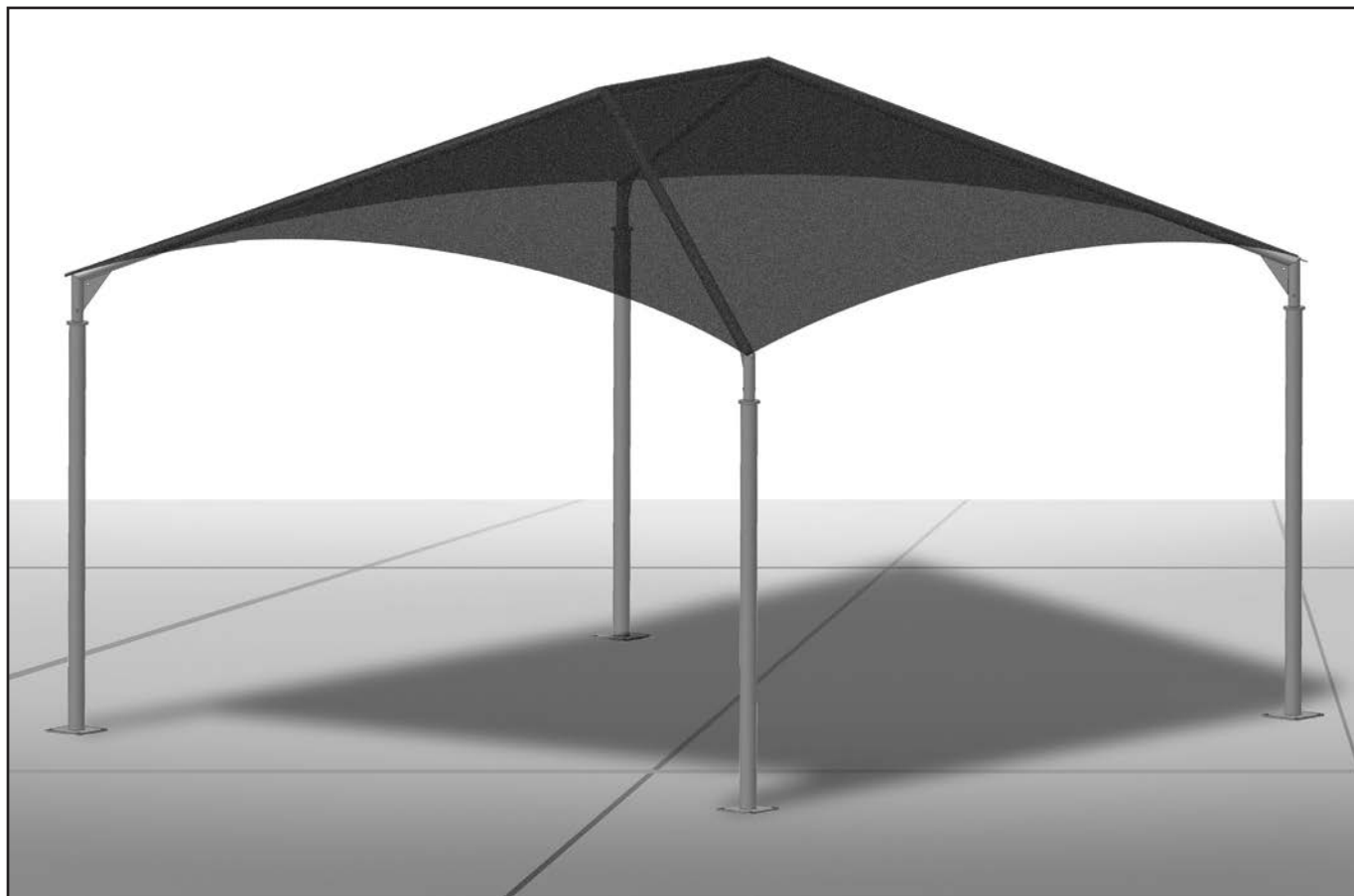


Installation Instructions

Perfectshade®



Please read all assembly / installation instructions before the installation or removal of this product.



7701 Highway 41 N
Evansville, IN 47725
Phone: 812-867-2421
Fax: 812-867-1429
1-800-544-4445
email: tents@anchorinc.com
www.anchorinc.com

Warning: The Perfect Shade Structure is intended for concrete Install only. Installer is solely responsible for evaluating the quality of the concrete and its suitability for this structure. Concrete installation surface must be level.

Manpower Required:

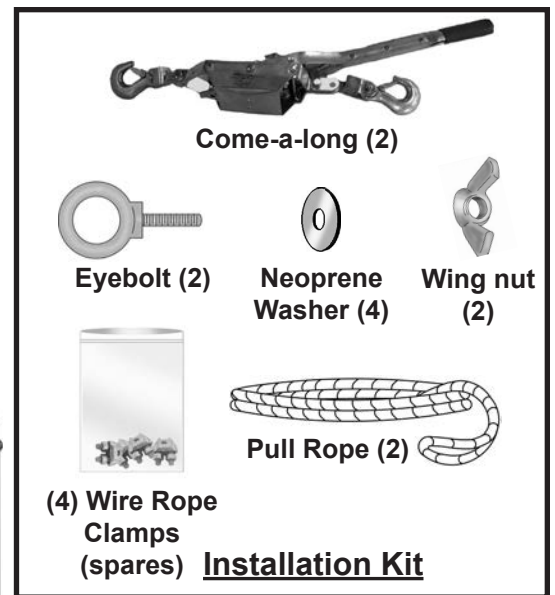
Three experienced installers should be able to assemble any size frame with fabric in two hours.

Caution:

Please read through this assembly manual completely before beginning your installation. Be sure the proper equipment and safety precautions are in place. We hope that you enjoy the design features of the Perfect Shade Structure.

1. Be aware to avoid contact of frame sections with any overhead power lines near the site.
2. Consult the local utility company prior to installation in order to avoid all underground power lines and gas lines or other utility easements.
3. Keep site clear of debris to avoid tripping, especially while carrying frame parts or bundle of fabric.
4. When moving frame sections by hand, use proper lifting techniques to protect the back, and avoid pinching fingers while making hardware connections.
5. Do not drag bundle of fabric on concrete, asphalt, or ground as this can cause damage to the fabric from abrasion through the bag.
6. The installation method described here requires coordination of tasks between workers. A safe installation is dependent on that coordination. Work cooperatively as a team.
7. This tent is manufactured for use as a temporary sun shade structure. Evacuation is recommended if threatening or windy weather occurs.

<u>Parts List</u>	
Part Name	Qty. for (1) Frame
Upright with Base Plate	4
Hip Weldment	4
Peak Weldment	2
Ridge Tube	1
Hex Head Cap Screw 1/2 x 3 1/4"	4
1/2" Nylock Nut	4
Fabric top in bag with wire rope & clamps	1
Installation Kit (purchased separately)	1



Step 1:

Choice of 1/2" diameter anchoring devices are at the discretion of the customer and not supplied by Anchor Industries.

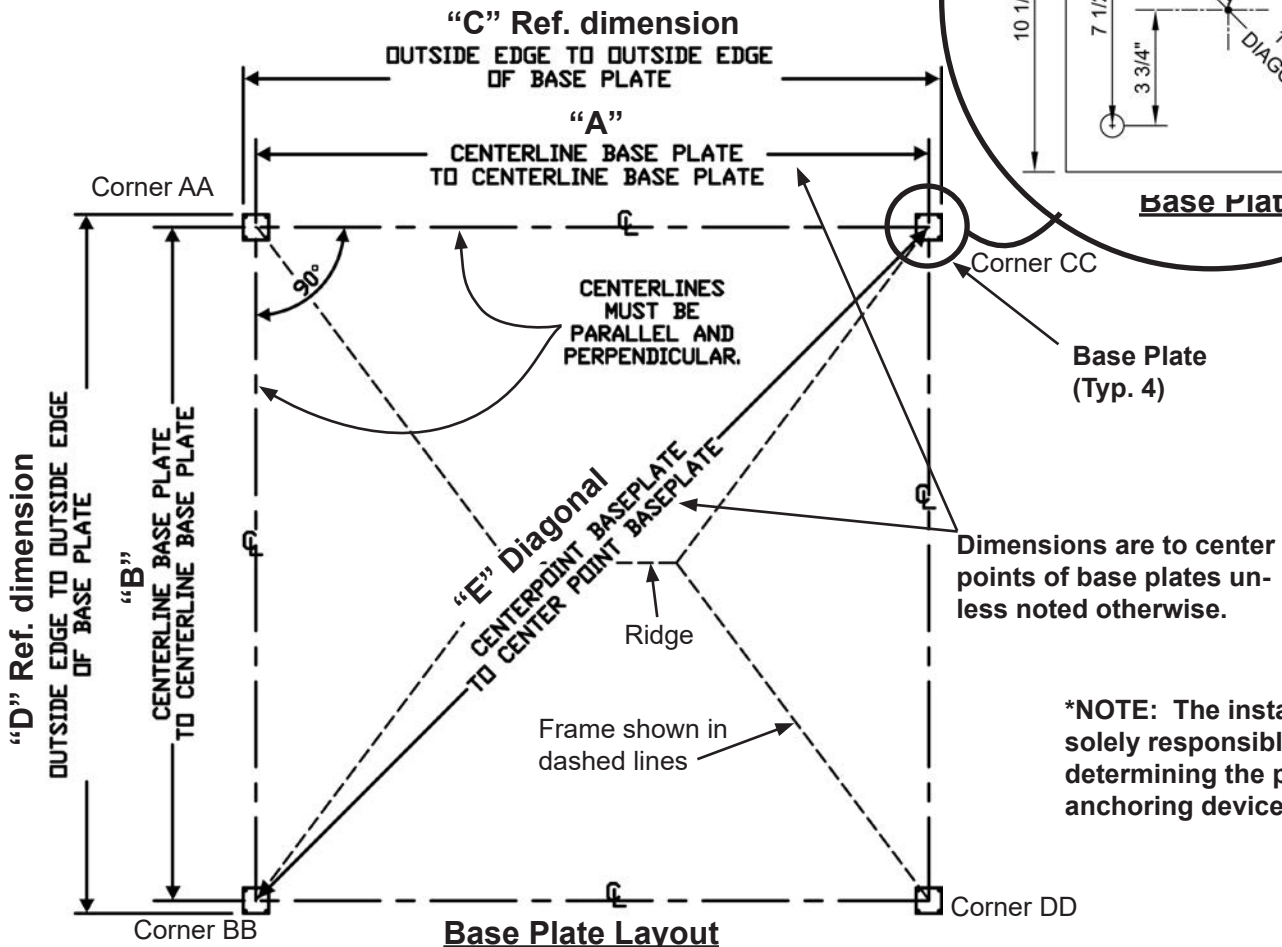
Use plan view shown below to measure out and mark where anchoring devices will go. Use the uprights themselves as a guide or you can use base plate paper templates.

Note: Base plate templates can be found and printed from Anchor's website.

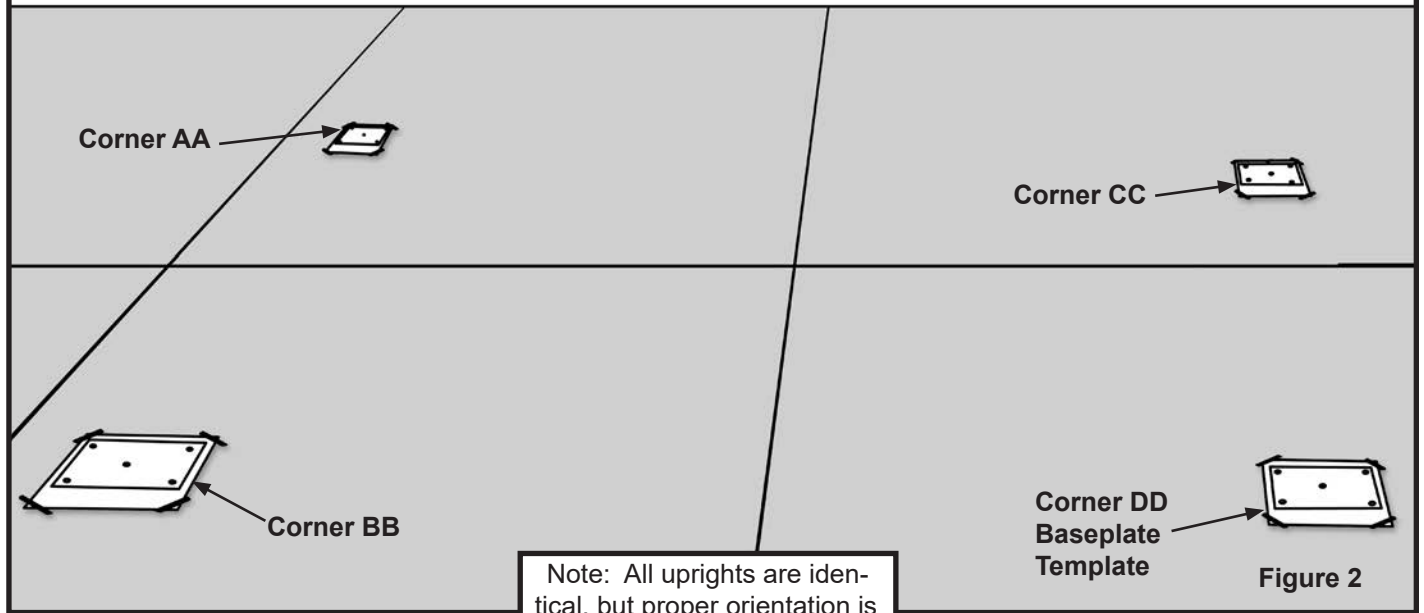
DIMENSION CHART FOR BASE PLATE LAYOUT					
Size	A	B	C	D	E
10' x 10'	9'- 10"	9'-10"	10'-8 1/2"	10'-8 1/2"	13'-10 7/8"
10' x 15'	14'- 10"	9'-10"	15'-8 1/2"	10'-8 1/2"	17 -9 9/16"
10' x 20'	19'- 10"	9'-10"	20'-8 1/2"	10'-8 1/2"	22'-1 5/8"
15' x 15'	14'- 10"	14'-10"	15'-8 1/2"	15'-8 1/2"	20'-11 3/4"
15' x 20'	14'- 10"	19'-10"	15'-8 1/2"	20'-8 1/2"	24'-9 3/16"
20' x 20'	19'- 10"	19'-10"	20'-8 1/2"	20'-8 1/2"	28'-0 9/16"
20' x 30'	29'- 10"	19'-10"	30'-8 1/2"	20'-8 1/2"	35'-9 7/8"

Caution: Concrete installation surface must be level.

(4) 3/4" dia. holes for anchoring devices.*



Note the orientation of the corners to the ridge. Base plates MUST be laid out in this order. -- AA, BB, CC and then DD.



Step 2

Stand one of the uprights over the installed anchors at Corner AA. (See Figure 2)

Warning: Stand at circled location in Figure 2a and face corner AA. Make sure there is a set of holes at the top of the upright (Figure 2b) perpendicular to you so that when hip is attached it will be pointed toward the ridge. If not, rotate baseplate 90 degrees and now there will be a set of perpendicular holes.

Step 3

Use the anchors to fasten the base plate to the ground and tighten to snug. (See Figure 3)

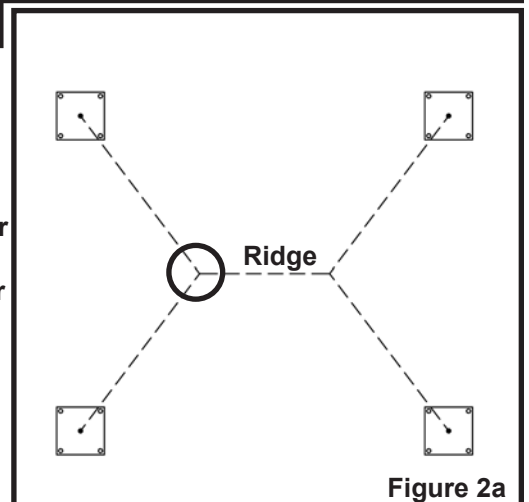


Figure 2a

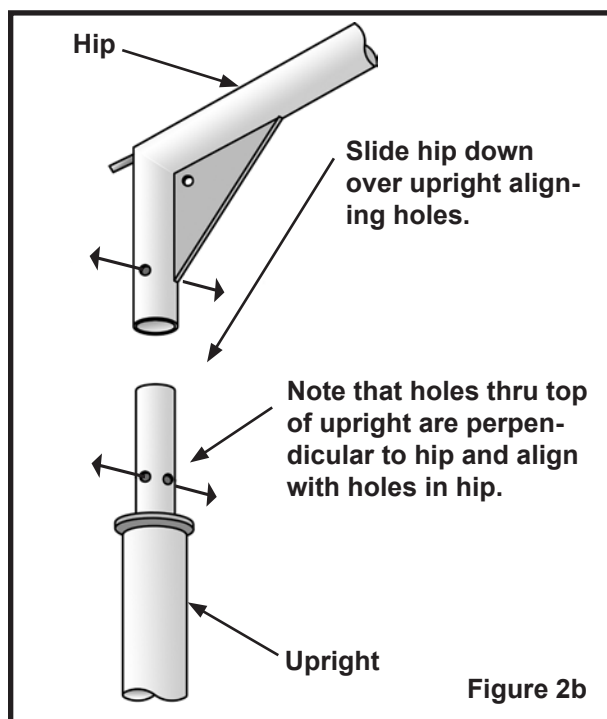


Figure 2b

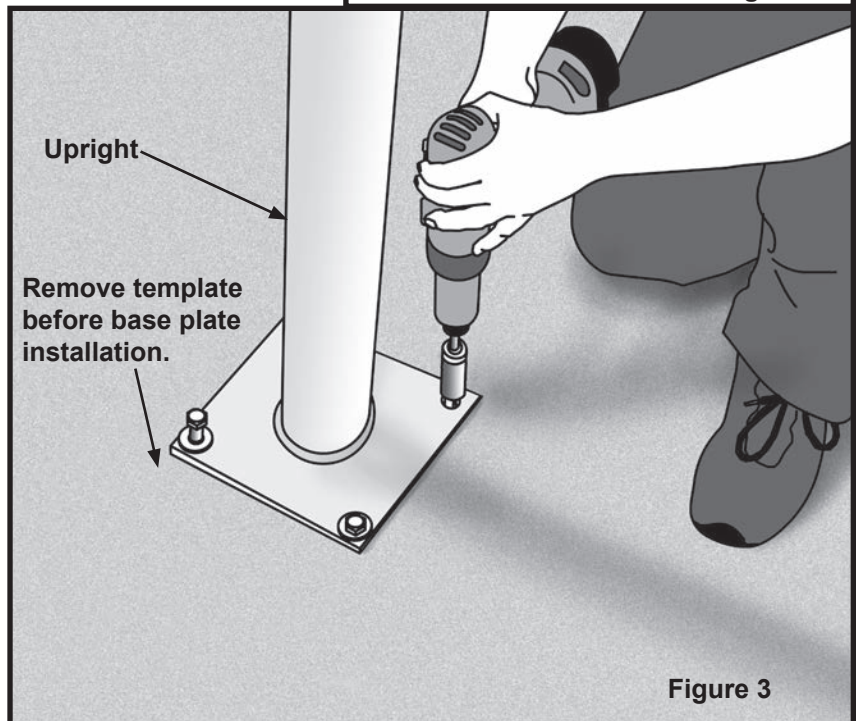


Figure 3

Step 4

Attach the first hip. Lift the Peak end of the hip up by climbing a ladder (ladder placed at the approximate position of the peak) (See Figure 4). Another person at the upright on a ladder must direct the person at the peak end of the hip so that it may be slipped into place on the upright. Make sure the holes in the upright are aligned with those in the hip. (See Figure 3) Loosely install bolt at hip to upright.

Step 5

Attach the Peak weldment to the hip. (Figure 5)

Warning: Examine the orientation of the peak weldment so that the angles of the hips and ridge look to be pointing in the proper directions.

Do not insert the bolt until later. For safety reasons, have the person at the peak stay at that position until all hips are installed.

Step 6

Erect the second upright at Corner BB using the same process as step 2 to ensure holes are pointed in correct position. Use the anchors to fasten only the 2 outside holes of the base plate to the ground but with a loose fit to aid in installation.

Step 7

Lift the peak end of the second hip up and place on the peak weldment. Do not insert the bolt until later. (See Figure 6)

Step 8

It may be necessary to lean or tip the upright to align it so that the hip can be slipped over the top of the upright. Once the hip is on the upright, check to be sure that the holes in the hip line up with the holes in the upright. If they do not align, your upright may be turned incorrectly. Loosely install bolt at hip to upright.

Step 9

Bolt the ridge tube to the peak weldment. Bolt the other peak weldment to the other end of the ridge tube. (See Figure 8)

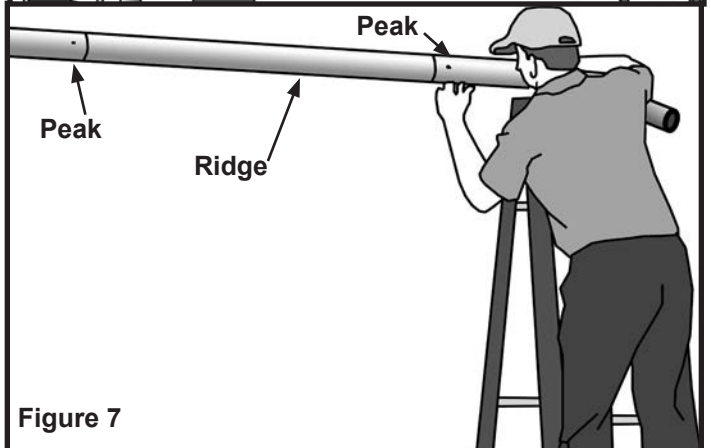
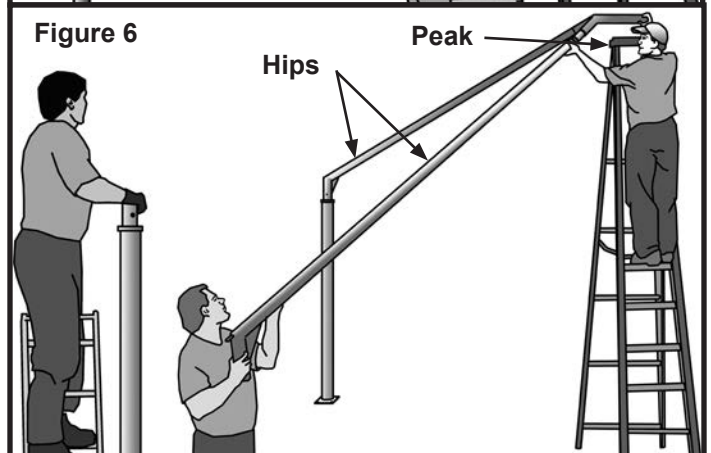
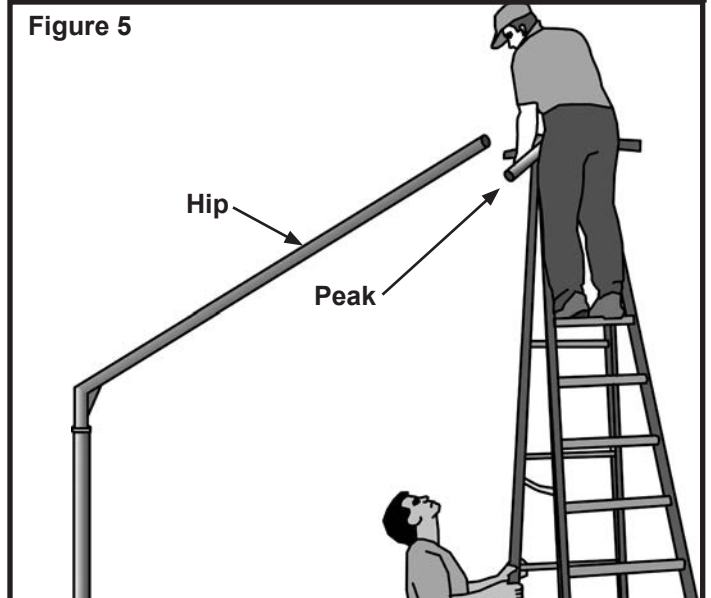
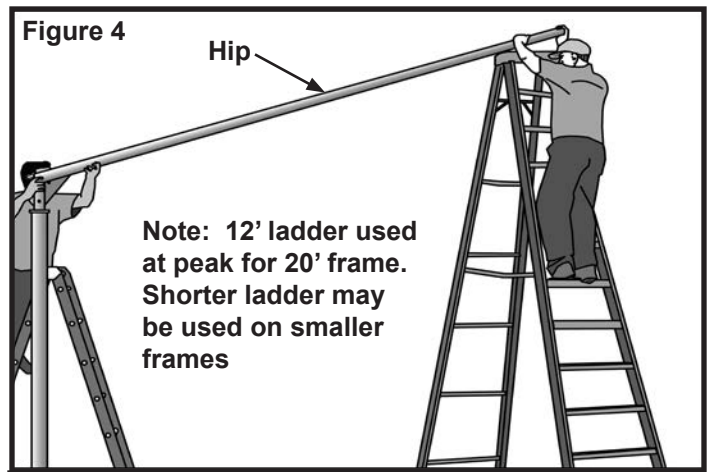
Step 10

Erect the third and fourth uprights (corners CC and DD) following the instructions from step 2 to step 8. Use the anchors to fasten only the 2 outside holes of the base plate to the ground but with a loose fit to aid in installation.

Step 11

Insert bolts for peak weldment into remaining hips. Install remaining base plate anchors and tighten to snug all anchor devices. Make sure all nuts and bolts are tightened and secure.

The Frame portion of the Perfect Shade is complete.



Step 12

Remove fabric from bag. Do not drag over concrete or other rough surfaces as this could damage the fabric. Carry the fabric up the ladder to the ridge. Throw the fabric over the ridge as shown in Figure 8. Be certain that the fabric is right side up with the seams running perpendicular to the ridge. You will know the fabric is right side up when the flaps at the corners are on the top side.

Step 13

At this point you need to decide which corner will be the corner that will be your wire rope attachment corner. This corner will be the one where the wire rope loops are protruding from the corner of the fabric. Let the fabric fall loosely down the hips, keeping it fairly centered on the ridge. (Figure 8)

Step 14

Start at the adjacent corner from the wire rope attachment corner. Pull the top down over the corner and insert the Corner Pin into the hole in the fabric. Tuck the wire rope under the pin and then pull the corner flap down over the pin so that the corner pocket catches on the pin. (See Figure 9).

Step 15

Proceed to the corner diagonally opposite the first corner. Using short bursts, pull the fabric down over the corner using the web handles and attach as in Step 14. (See Figure 10).

Step 16

Proceed to the corner opposite the wire rope attachment corner. Using the same technique as on Step 15, attach this corner.

Step 17

Proceed to the last corner (The wire rope attachment corner - See Figure 11). Slide a pull rope from the installation kit (sold separately) through the web handles as shown in Figure 10. Pull the corner down until the hole is caught over the corner pin. (A second person on a ladder may be required to guide the pull rope so that the corner is more easily pulled into place.) Remove the pull rope. Note that the cable loops will be hanging loose.

Step 18

Attach the eyebolts, neoprene washers and wing nuts. (See Figure 12) These will be attached to the two uprights adjacent to the wire rope attachment corner with the eyebolts facing the wire rope attachment corner. Place one neoprene washer each side of the plate, neoprene side down, between the eyebolt and wing nut to prevent scratching of the frame finish.

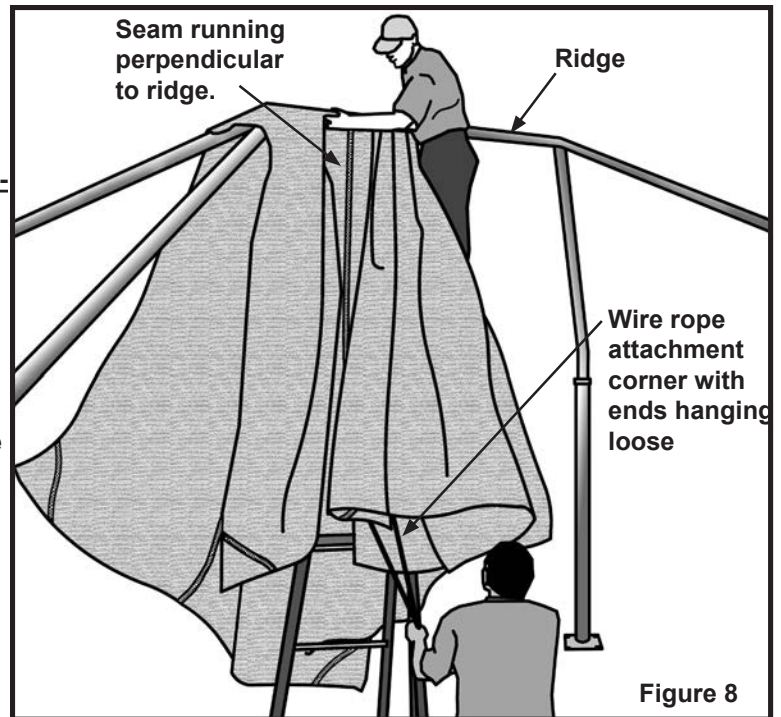


Figure 8

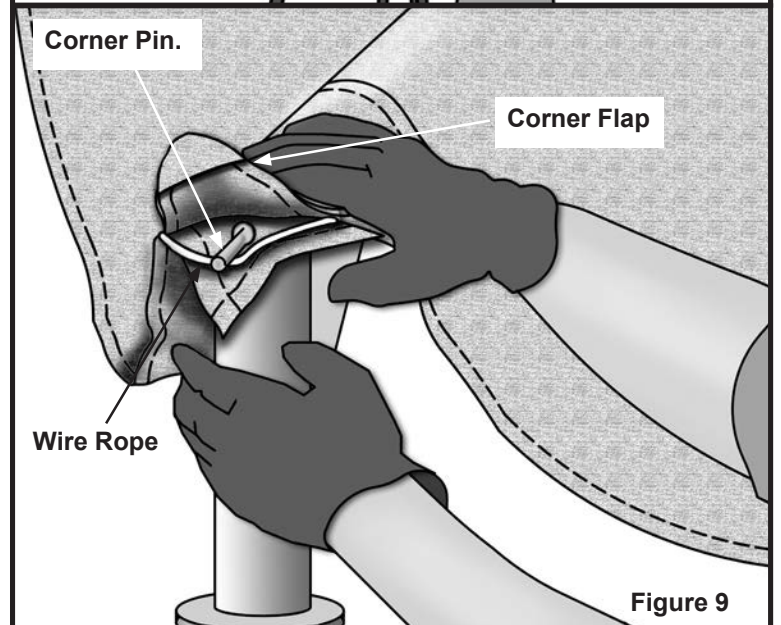


Figure 9

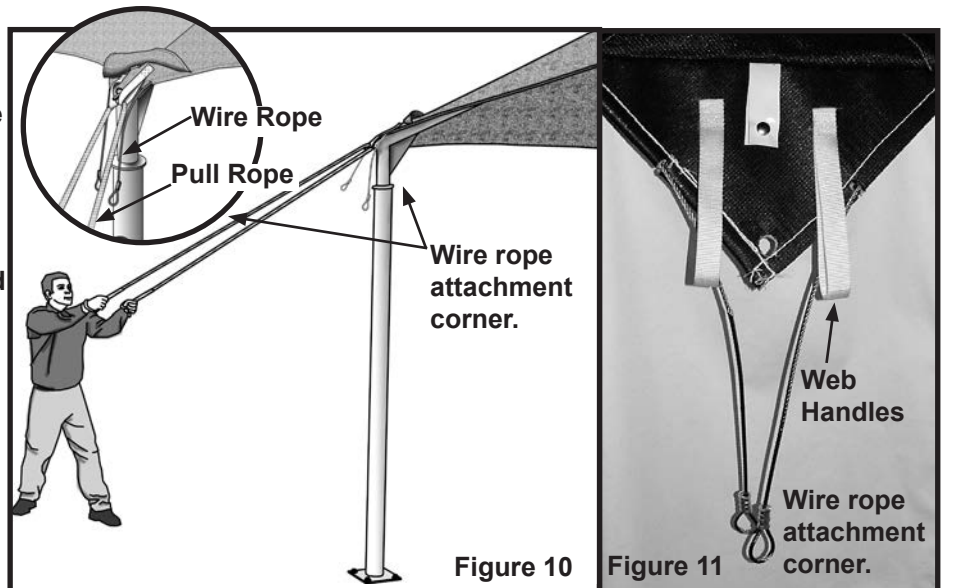


Figure 10

Figure 11

Step 19

For 20' frame, attach the ropes from the installation kit (sold separately) to the eyebolts by slipping one end of the rope through the eyebolt and then slip the other end through that loop so that the rope is extended its full length. Attach the loose end of the come-a-long to the end loop and expand the come-a-long all the way out so it is close to the wire rope connection corner as shown in Figure 13.

Connect the ratchet-end snap on the come-a-long to the wire rope coming from around the other side of the top. (Figure 13). Do this for both sides.

For 15' frame, slip one end of the rope through the eyebolt and attach both end loops of the rope (so that rope is doubled) to the come-a-long as explained above.

For 10' frame, attach the come-a-long directly to the eyebolt as explained above.

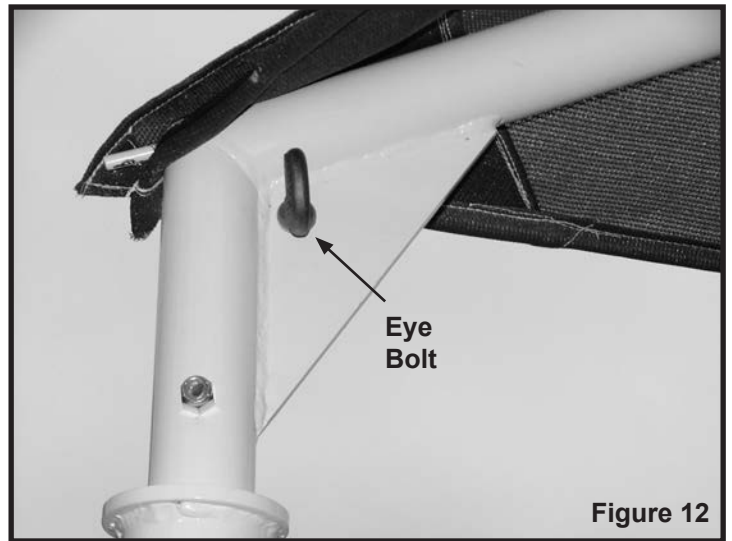


Figure 12

Step 20

Slowly advance come-a-longs, with a just a few cranks on one and then the other so that both come-a-longs have the same amount of tension at the same time. When you are satisfied with the tension on the cables, you must fasten them using the cable clamps attached to the top fabric inside a plastic bag or in the installation kit (sold separately). Using a pair of vice grips, if available, clamp or hold the two cables together on one side (Examine each side to see which side is most accessible). (Figure 14) Fasten one of the cable clamps onto the cables and tighten. Fasten a second cable clamp right beside the first one and tighten. (Figure 15)

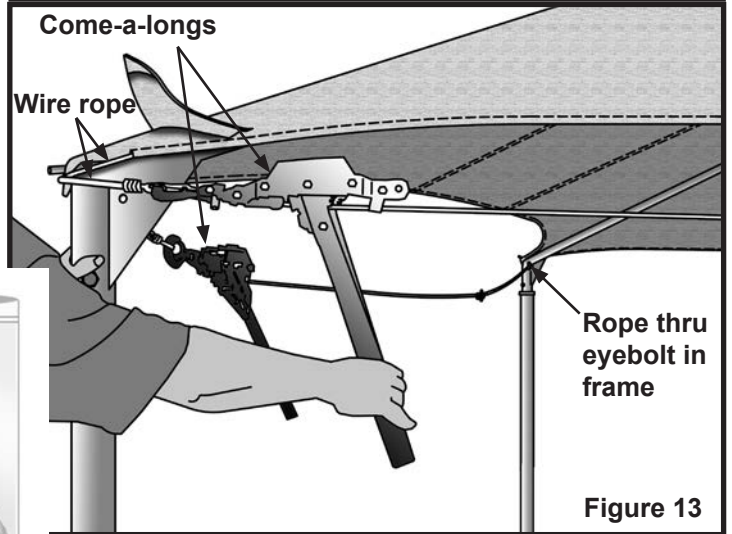


Figure 13

Step 21

Now loosen the tension on each of the come-a-longs until you can easily remove them. Go to the other side of the wire rope attachment corner and attach the remaining (2) cable clamps to the wire ropes.

Now carefully remove the come-a-longs, ropes, and eyebolts.

To finish the corner, unsnap the tabs and wrap the loose ends of the wire ropes up into the tabs and also the web handles so they may be hidden away under the corner flap. Snap them into the keeper tabs and pull the flap down onto the corner pin to finish. (Figure 16)

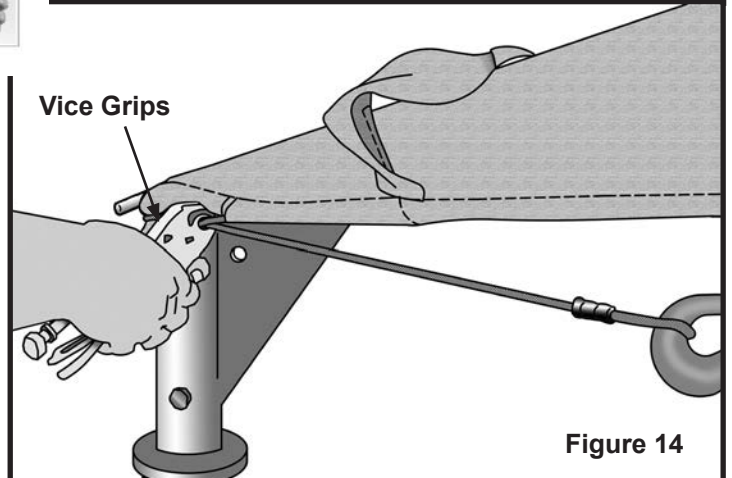


Figure 14

Removal of top:

You must attach the come-a-longs and ropes onto the looped ends of the wire ropes and tension them as shown in Figure 13 before removing the cable clamps or injury could occur. Then work backwards with the steps above.

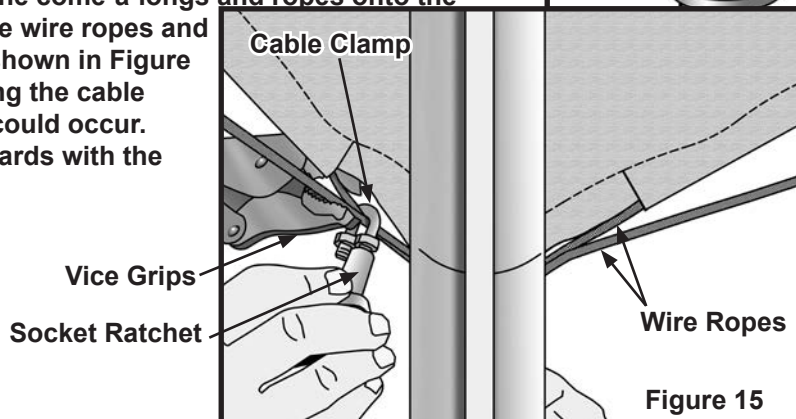


Figure 15

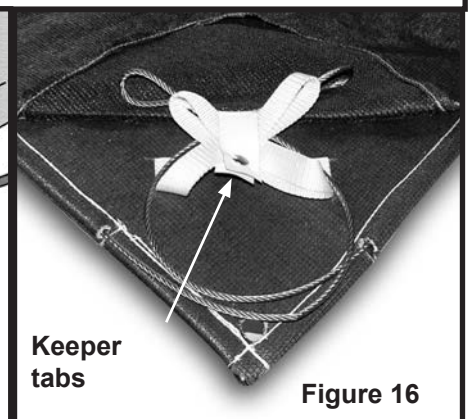


Figure 16

PERFECT SHADE EMBEDDED IN CONCRETE

ALTERNATE INSTALLATION INSTRUCTIONS

This page must be used in conjunction with standard Perfect Shade Installation Instructions

When installing a frame that will be embedded in concrete, frame must be assembled prior to setting in concrete.

Step 1 Alternate

Using Dimension Chart in Step 1, dig (4) 1'-3" minimum diameter holes, 2'-3" deep or as required by soil conditions or local code.

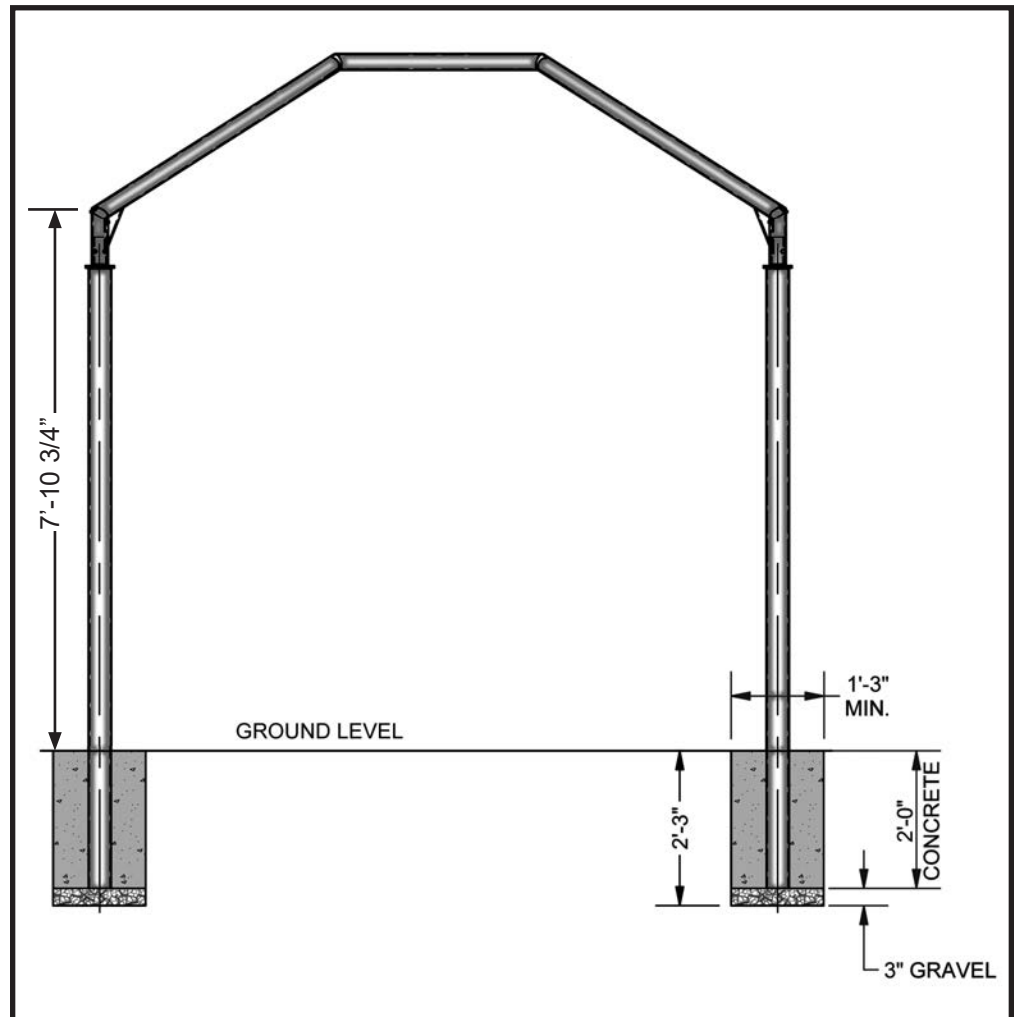
Add 3" of gravel to bottom of holes. (Bottom of pole must be allowed to drain water)

Frame may be assembled with uprights in holes. See steps 4 through 11 for frame assembly.

When frame is assembled, plumb and level frame and brace into position.

Fill concrete to ground level. Allow concrete to dry 72 hours before installing fabric. See steps 12 through 21.

Note: Concrete and gravel for setting uprights for embedded frame is required. Installer to supply.



Note: Footing size shown is for clarity of installation only. Size of footings for the actual installation site is the responsibility of the installer.



PHONE NUMBER
812 · 867 · 2421

FAX NUMBER
812 · 867 · 1429

Anchor products are of superior design and operate best within the parameters of these instructions. It is imperative that the instructions be carefully read and **COMPLETELY FOLLOWED**. Please read installation instructions before the installation or removal of this product. Installation instructions are available online at www.anchorinc.com or by calling 1-800-544-4445.



WARNING:

1. For each installation, the installer is solely responsible for evaluating the site and the proper securing method determined. Some soils require different staking or securing than that provided with the tent. Due to this variety of soil conditions, these are the manufacturer's suggested sequence of installation procedures. Anchor's responsibility is limited to the manufacture of the tent parts and materials. We are not responsible for methods that installers may choose to erect and secure the tent to the ground.
2. The number of stakes suggested in the installation instructions do not necessarily meet all or any relevant codes on the site of the tent installation. The number of stakes suggested **will, in many cases, keep the tent erected**, however, due to various soil conditions; these stakes will be insufficient **to keep the tent secure in high winds**. It is the tent installer's responsibility, not the manufacturer, to determine the appropriate number of stakes to meet the necessary wind loads on the site. Regardless of the number of stakes we suggest, we make no representation or warranty as to whether this specific number of stakes will meet the local tent code. Anchor does not, nor can it make any suggestions, representation, or warranties about the adequate staking required at each specific installation site. Staking information provided in the installation instructions **is not a suggestion about what is necessary to meet a site-specific load**.

For additional important information, consult: "The IFAI Procedural Handbook For the Safe Installation and Maintenance of Tentage" and the IFAI Pocket Guide "Pullout Capacity of Tent Stakes", both available from the IFAI Tent Rental Division on their website (www.ifai.com).

3. Inasmuch as the weather is unpredictable, good judgment and common sense must be incorporated within installation guidelines. It is the responsibility of the tent installer/maintainer to determine the severity of the weather, proper time and method of installation and/or erection and disassembly. **Note: We recommend that snow and ice be removed from the tent surface as soon as possible because accumulation will damage the tent or fabric structure. Please consult with our Engineering Department about the maximum loads for each product.**

This product has been manufactured for use as a temporary sunshade structure. For the safety of all occupants, evacuation is recommended if threatening weather occurs, or if there is any doubt concerning the safe use of this product.

4. Proper safety equipment should be used at all times to ensure a safe installation and take down. We suggest a careful evaluation be made to determine safety equipment needed, such as hard hats, steel-toe shoes, safety glasses and other as required. It is our desire that all installations are safe. Please be aware of hidden dangers both underground, i.e., gas lines, water lines, electrical lines, etc. and above the tent such as power lines and telephone lines.
5. Anchor stands behind its products in accordance with its standard Terms and Conditions of sale. A copy of our Terms and Conditions of Sale can be obtained by contacting Anchor at the telephone number and/or address on this document.