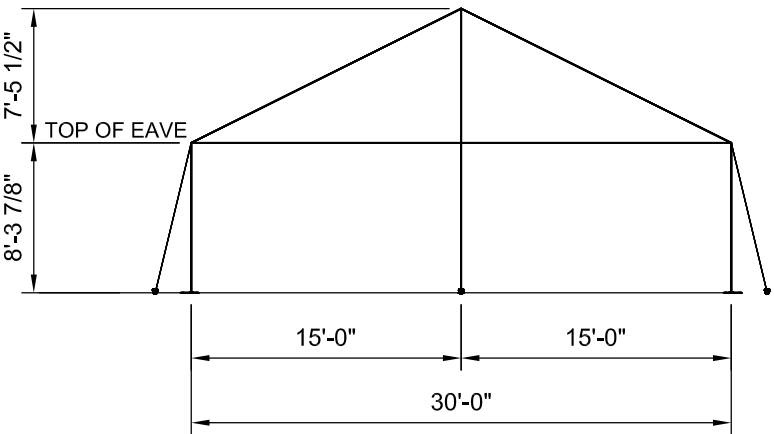
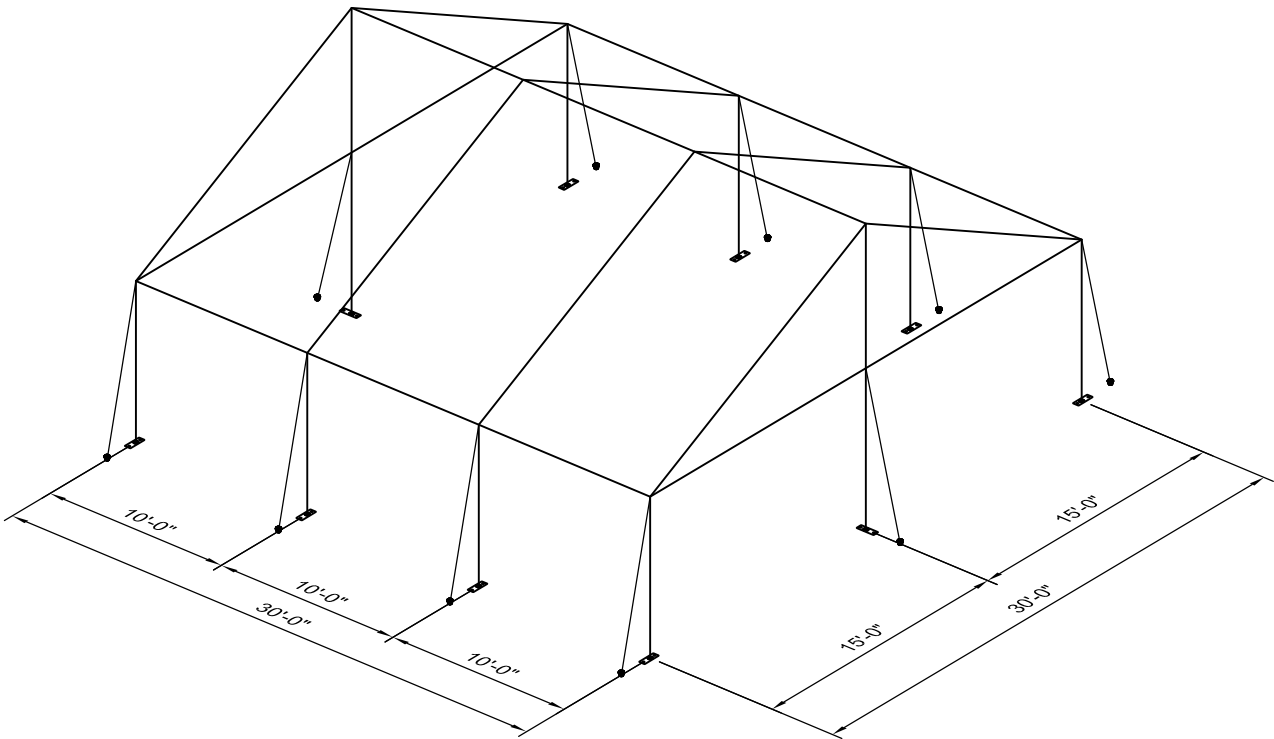


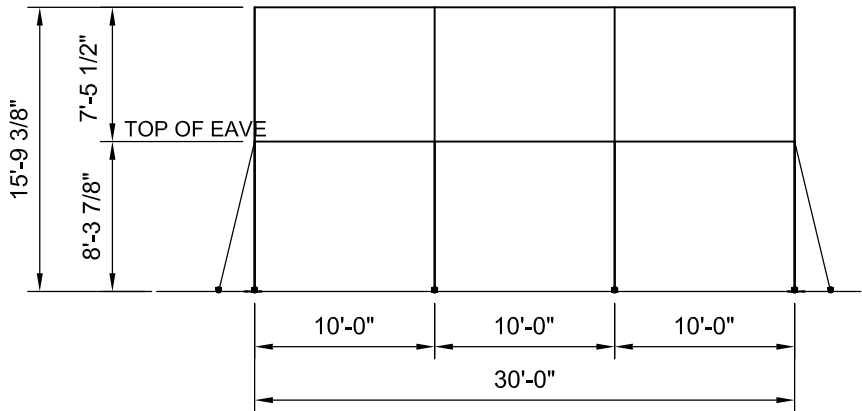
PLAN VIEW



END VIEW



3D VIEW



SIDE VIEW

NOTES:

- SEE THE I.F.A.I. STAKING GUIDE ON OUR WEBSITE (WWW.ANCHORINC.COM) FOR SOIL IDENTIFICATION & PULL-OUT CAPACITY OF STAKES.

F3 FRAME TENT
30' x 30' TENT - 900 SQ. FT.
• (10) 1" WEB GUYS WITH RATCHETS
• (20) 1" x 30" STAKES


* SEE NOTES

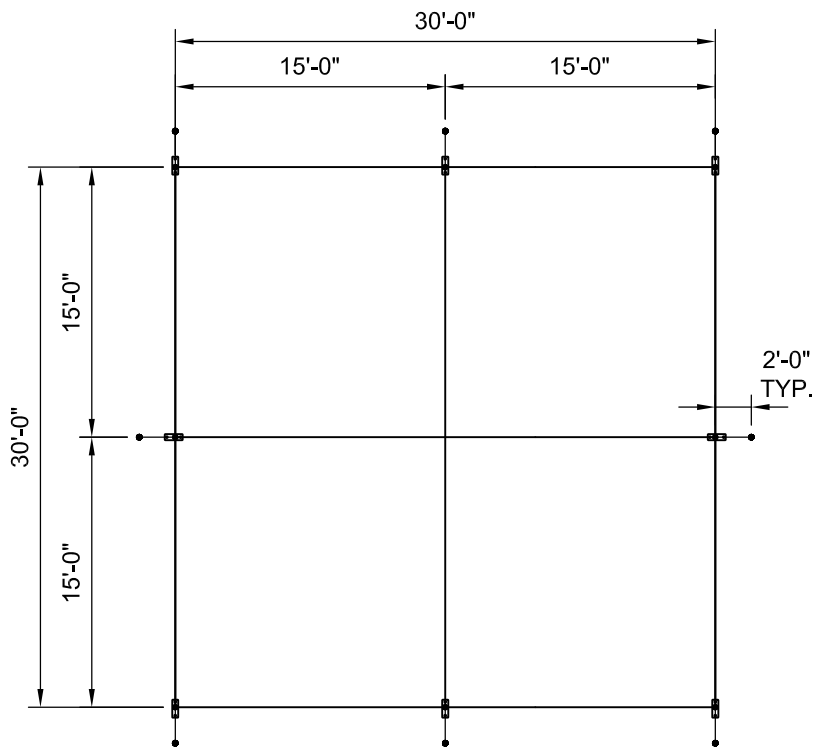


Caution:

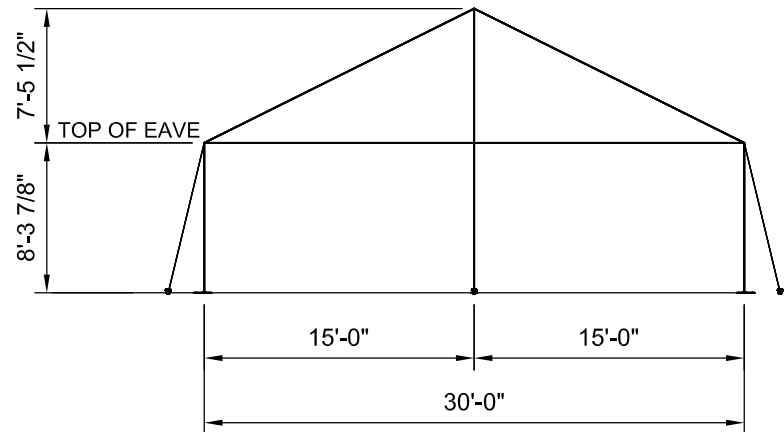
Staking or anchoring is the responsibility of the installer. Soil conditions will dictate the number of stakes or anchors required. **Do not use this drawing to determine staking requirements.** Contact Anchor for Engineering loading data that can be used in conjunction with IFAI methodologies to determine site specific anchoring requirements.

1		2/29/2016	DMK
REV	EC	DATE	BY
REVISION HISTORY			

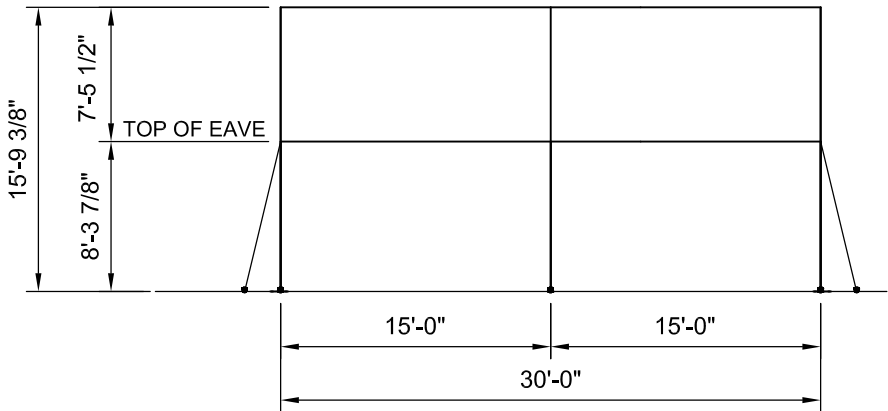
ITEM DESCRIPTION		ITEM NO.
		All data and information contained in or disclosed by this document is confidential and proprietary information of Anchor Industries, Inc. and all rights therein are expressly reserved. By accepting this material the recipient agrees that this material and the information contained therein is held in confidence and in trust and will not be used, copied, reproduced in the whole or in part, nor its contents revealed in any manner to others except to meet the specific purpose for which it was delivered.
F3 BROCHURE DRAWING		
30' x 30' GABLE END FRAME W/(3) 10' MIDS		
DRAWN BY: DMK	CHECKED BY:	DRAWING NO.
APPROVED BY:	EC#	DATE: 08-17-2015
		15-284-4-1



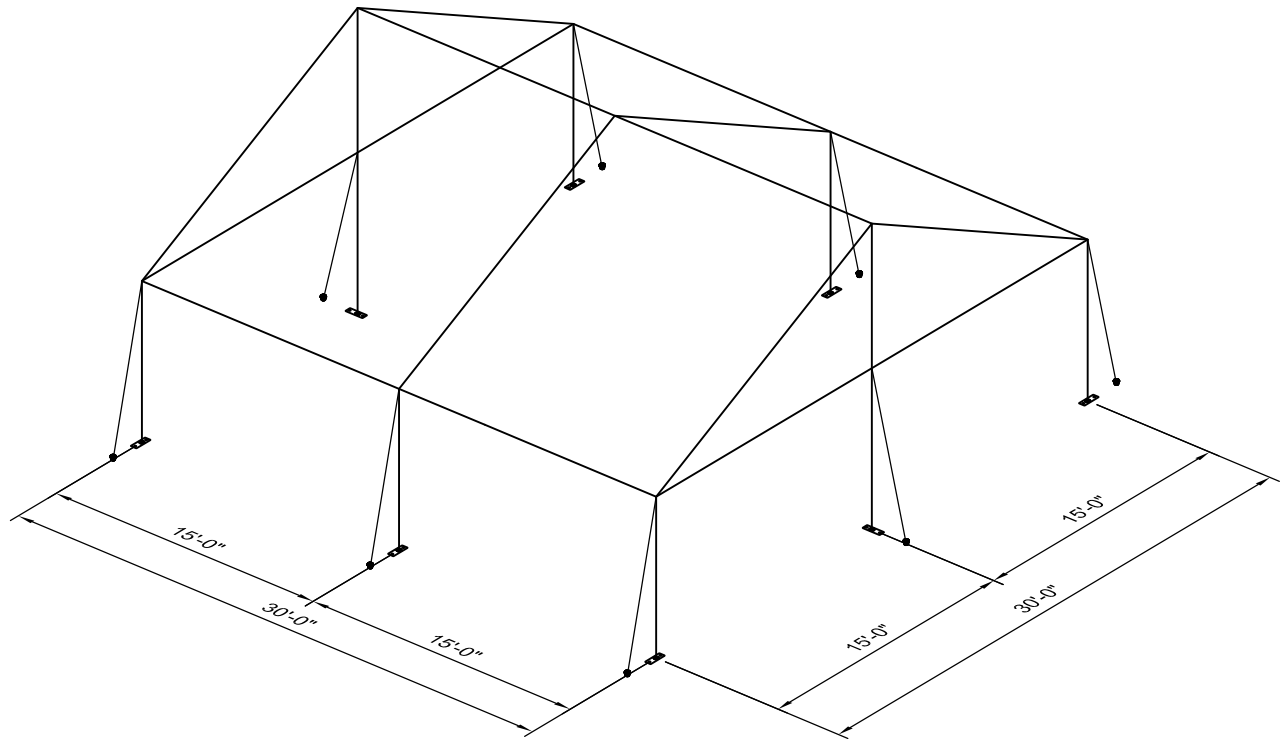
PLAN VIEW



END VIEW



SIDE VIEW



3D VIEW

NOTES:

1. SEE THE I.F.A.I. STAKING GUIDE ON OUR WEBSITE (WWW.ANCHORINC.COM) FOR SOIL IDENTIFICATION & PULL-OUT CAPACITY OF STAKES.


F3 FRAME TENT
30' x 30' TENT - 900 SQ. FT.
• (8) 1" WEB GUYS WITH RATCHETS
• (16) 1" x 30" STAKES

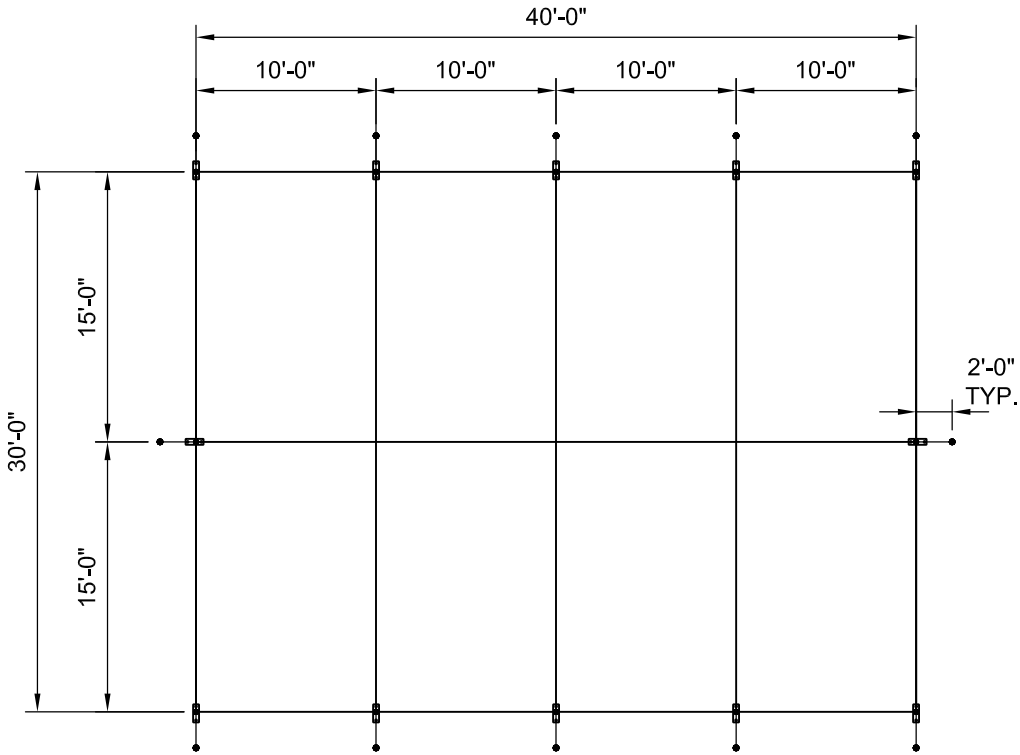
* SEE NOTES



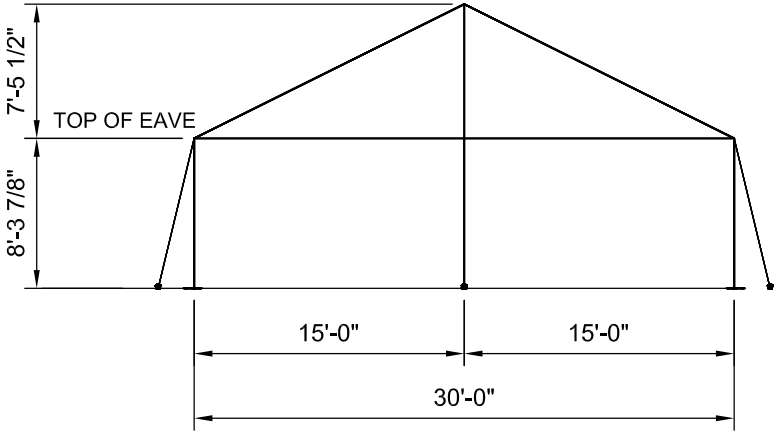
Caution:
Staking or anchoring is the responsibility of the installer. Soil conditions will dictate the number of stakes or anchors required. **Do not use this drawing to determine staking requirements.** Contact Anchor for Engineering loading data that can be used in conjunction with IFAI methodologies to determine site specific anchoring requirements.

1		2/29/2016	DMK
REV	EC	DATE	BY
REVISION HISTORY			

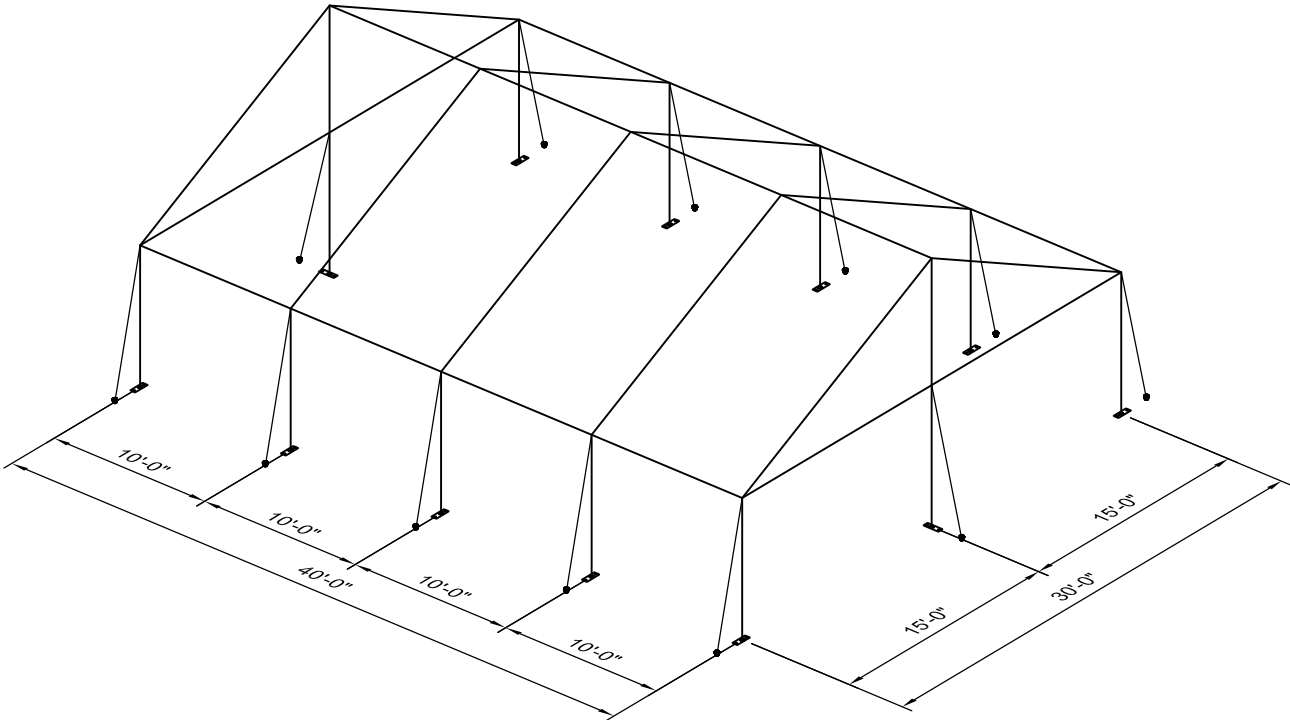
ITEM DESCRIPTION		ITEM NO.
 <small>All data and information contained in or disclosed by this document is confidential and proprietary information of Anchor Industries, Inc. and all rights therein are expressly reserved. By accepting this material the recipient agrees that this material and the information contained therein is held in confidence and in trust and will not be used, copied, reproduced in the whole or in part, nor its contents revealed in any manner to others except to meet the specific purpose for which it was delivered.</small>		
F3 BROCHURE DRAWING		
30' x 30' GABLE END FRAME W/(2) 15' MIDS		
DRAWN BY: DMK	CHECKED BY:	DRAWING NO. 15-284-8-1
APPROVED BY:	EC# DATE: 08-17-2015	



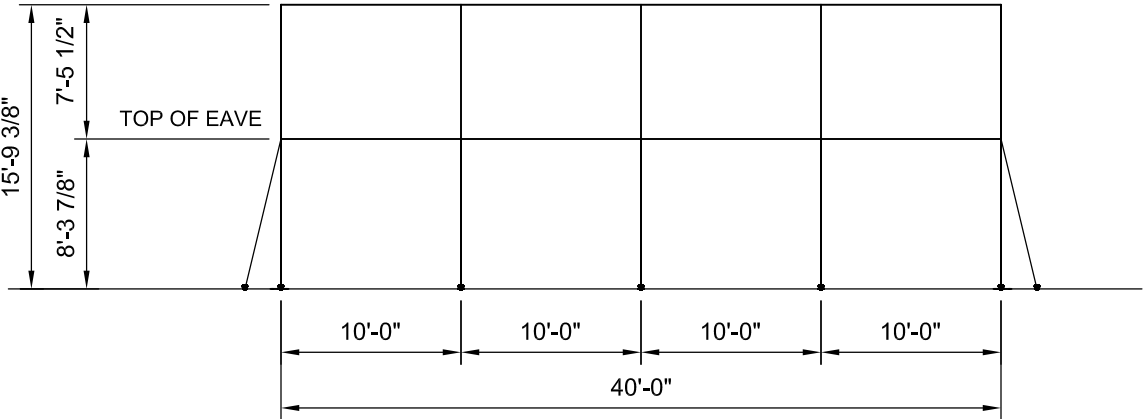
PLAN VIEW



END VIEW



3D VIEW



SIDE VIEW

NOTES:

1. SEE THE I.F.A.I. STAKING GUIDE ON OUR WEBSITE (WWW.ANCHORINC.COM) FOR SOIL IDENTIFICATION & PULL-OUT CAPACITY OF STAKES.

- F3 FRAME TENT
30' x 40' TENT - 1200 SQ. FT.
• (12) 1" WEB GUYS WITH RATCHETS
• (24) 1" x 30" STAKES


* SEE NOTES

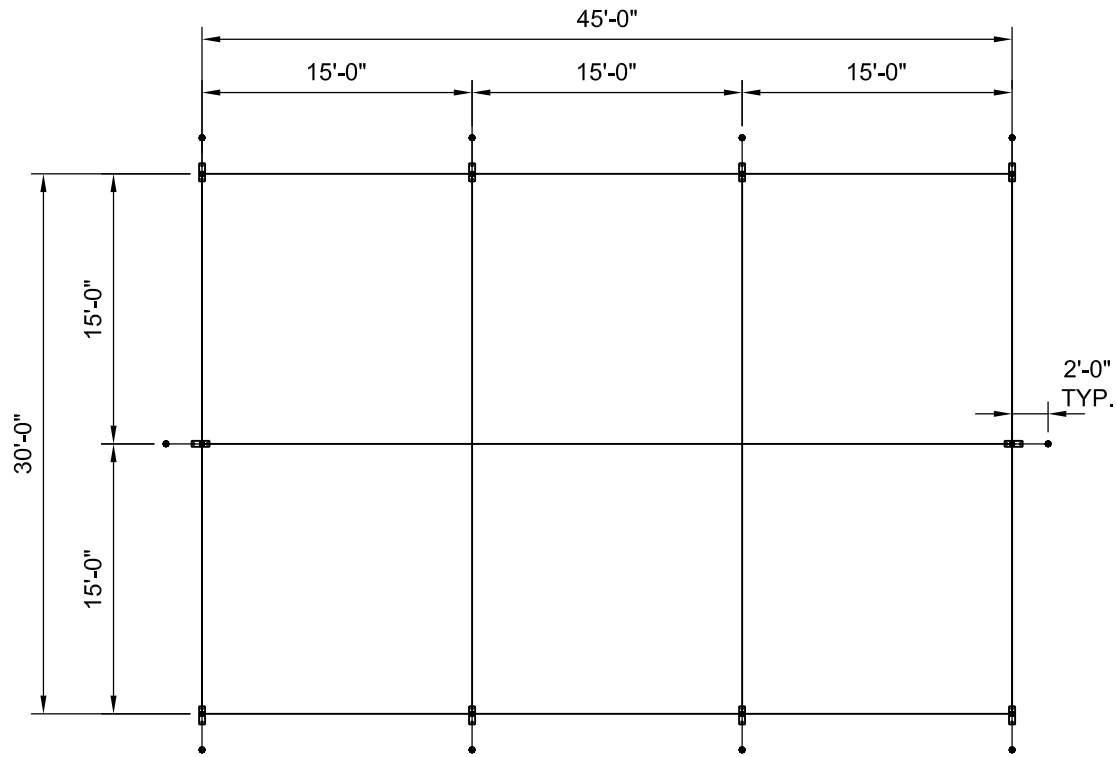


Caution:

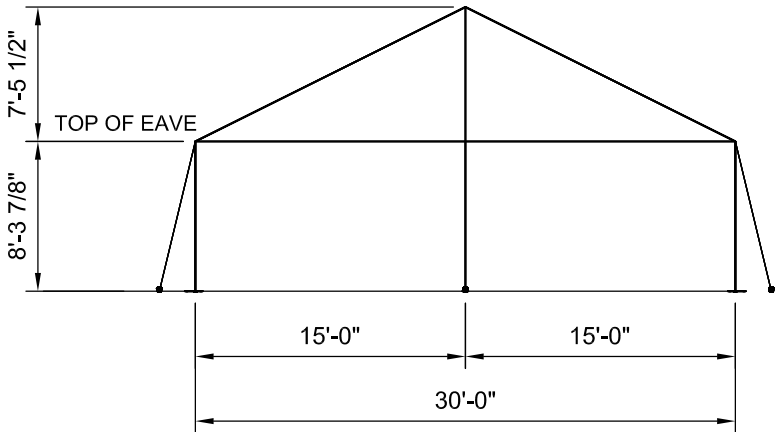
Staking or anchoring is the responsibility of the installer. Soil conditions will dictate the number of stakes or anchors required. **Do not use this drawing to determine staking requirements.** Contact Anchor for Engineering loading data that can be used in conjunction with IFAI methodologies to determine site specific anchoring requirements.

1		2/29/2016	DMK
REV	EC	DATE	BY
REVISION HISTORY			

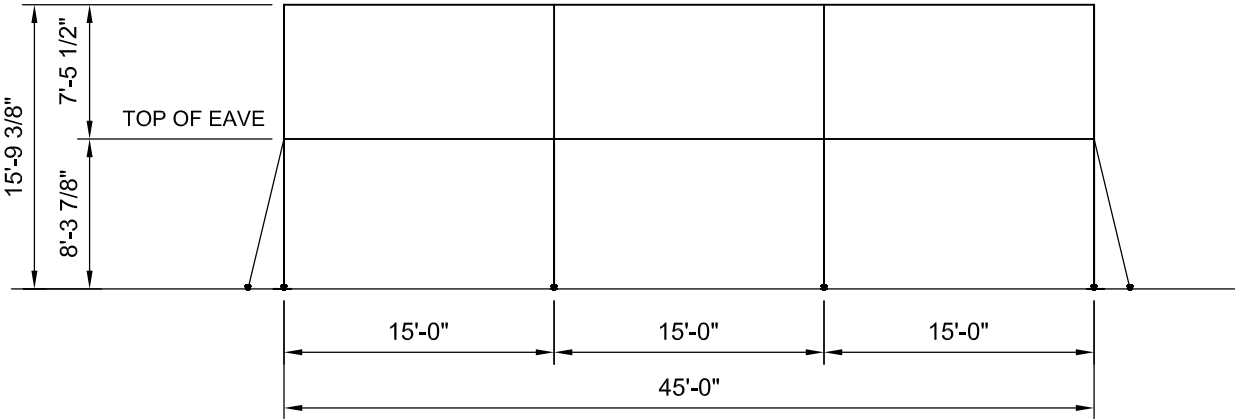
ITEM DESCRIPTION		ITEM NO.
		All data and information contained in or disclosed by this document is confidential and proprietary information of Anchor Industries, Inc. and all rights therein are expressly reserved. By accepting this material the recipient agrees that this material and the information contained therein is held in confidence and in trust and will not be used, copied, reproduced in the whole or in part, nor its contents revealed in any manner to others except to meet the specific purpose for which it was delivered.
F3 BROCHURE DRAWING		
30' x 40' GABLE END FRAME W/(4) 10' MIDS		
DRAWN BY: DMK	CHECKED BY:	DRAWING NO.
APPROVED BY:	EC#	DATE: 08-17-2015
		15-284-4-2



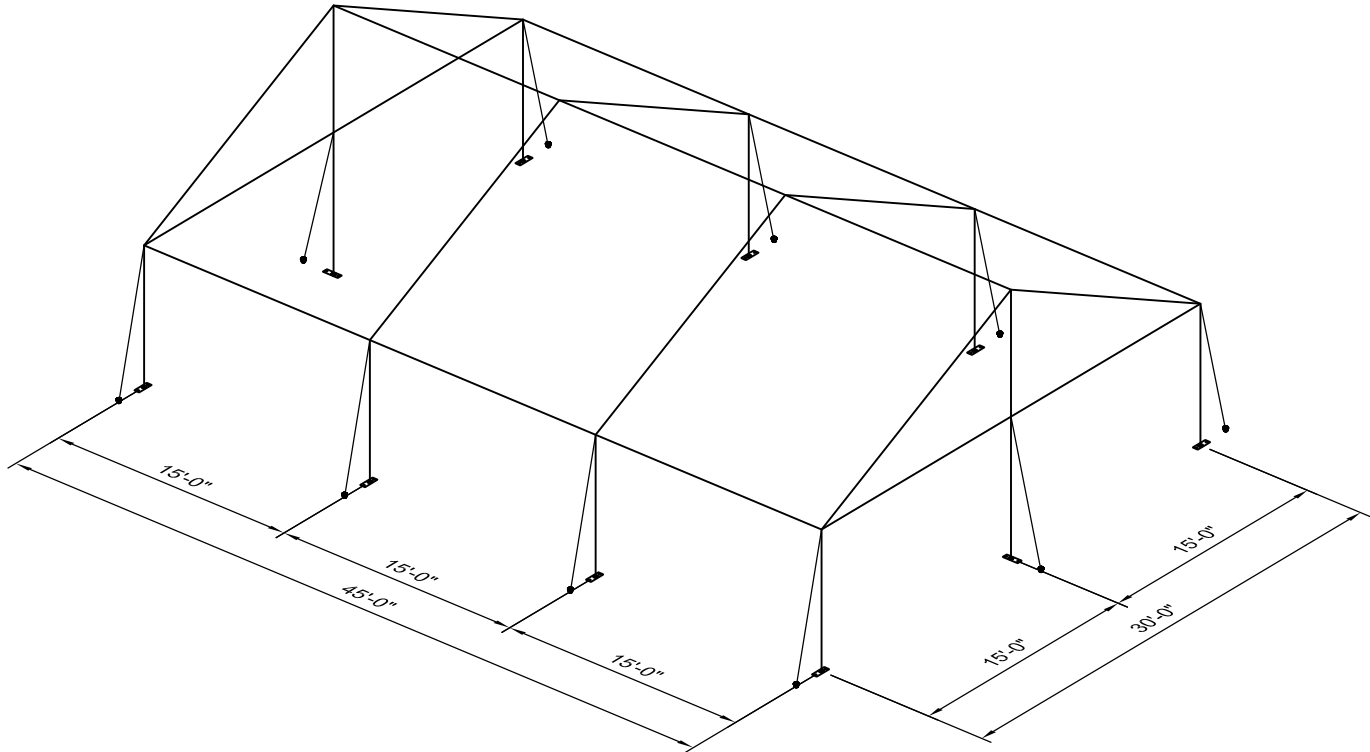
PLAN VIEW



END VIEW



SIDE VIEW



3D VIEW

NOTES:


1. SEE THE I.F.A.I. STAKING GUIDE ON OUR WEBSITE (WWW.ANCHORINC.COM) FOR SOIL IDENTIFICATION & PULL-OUT CAPACITY OF STAKES.

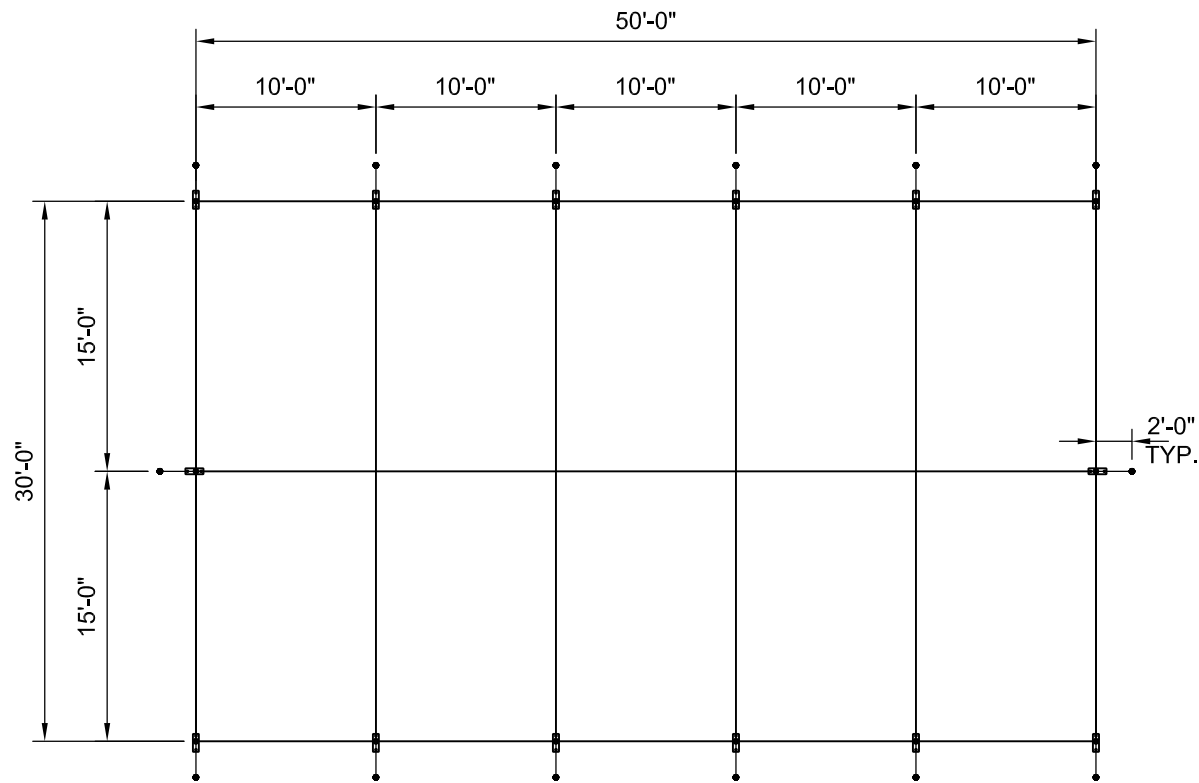
F3 FRAME TENT
30' x 45' TENT - 1350 SQ. FT.
• (10) 1" WEB GUYS WITH RATCHETS
• (20) 1" x 30" STAKES
* SEE NOTES



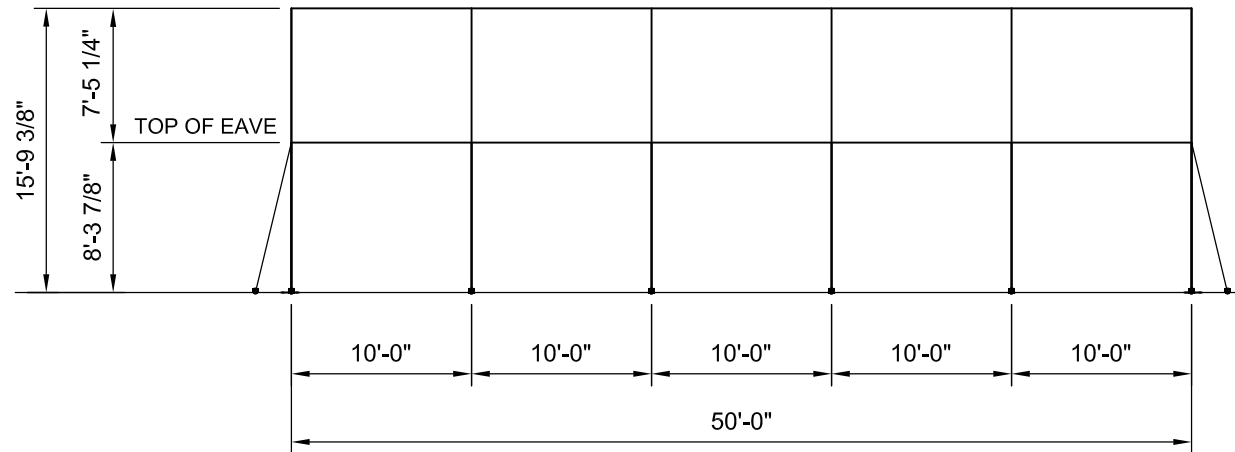
Caution:
Staking or anchoring is the responsibility of the installer. Soil conditions will dictate the number of stakes or anchors required. **Do not use this drawing to determine staking requirements.** Contact Anchor for Engineering loading data that can be used in conjunction with IFAI methodologies to determine site specific anchoring requirements.

1		2/29/2016	DMK
REV	EC	DATE	BY
REVISION HISTORY			

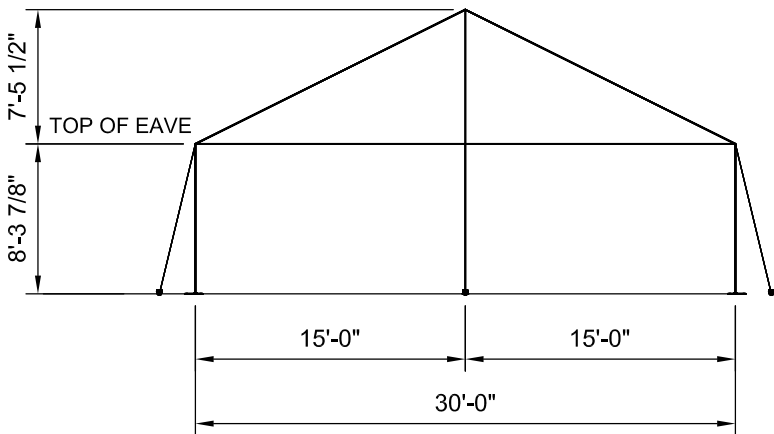
ITEM DESCRIPTION		ITEM NO.
 <small>All data and information contained in or disclosed by this document is confidential and proprietary information of Anchor Industries, Inc. and all rights therein are expressly reserved. By accepting this material the recipient agrees that this material and the information contained therein is held in confidence and in trust and will not be used, copied, reproduced in the whole or in part, nor its contents revealed in any manner to others except to meet the specific purpose for which it was delivered.</small>		
F3 BROCHURE DRAWING		
30' x 45' GABLE END FRAME W/(3) 15' MIDS		
DRAWN BY: DMK	CHECKED BY:	DRAWING NO.
APPROVED BY:	EC#	DATE: 08-17-2015
		15-284-8-2



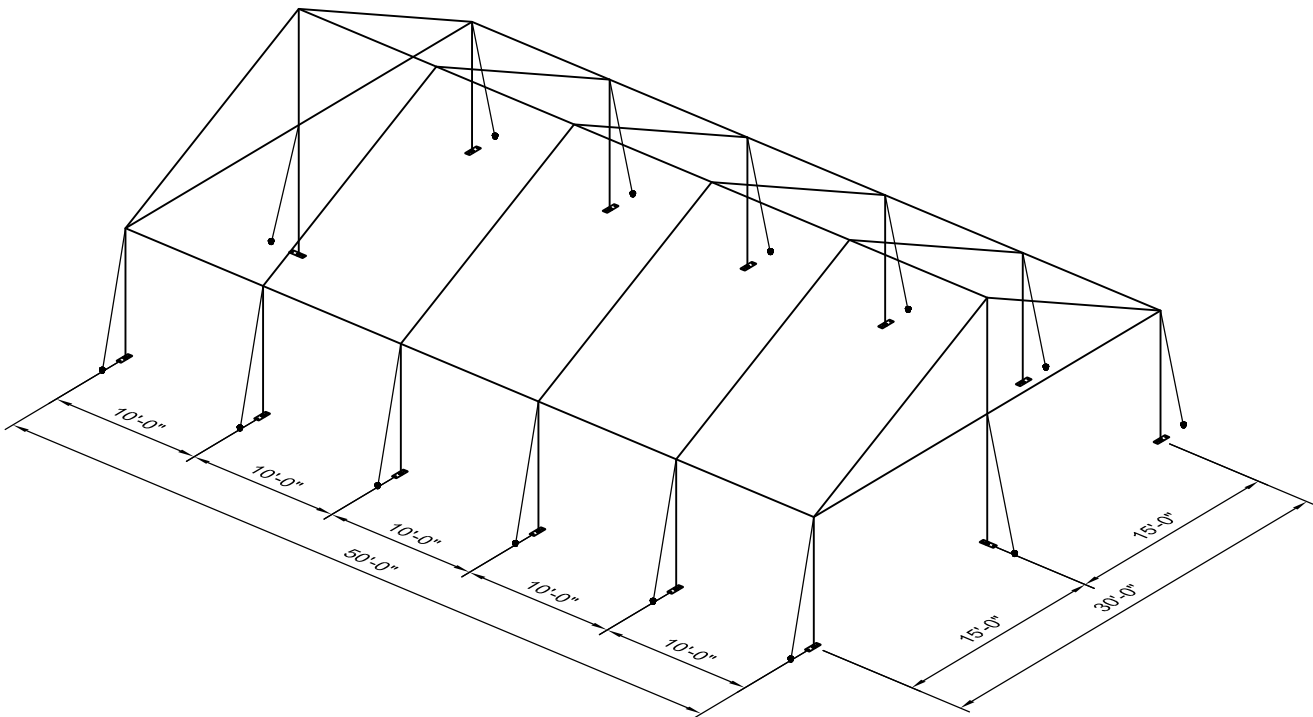
PLAN VIEW



SIDE VIEW



END VIEW



3D VIEW

NOTES:

1. SEE THE I.F.A.I. STAKING GUIDE ON OUR WEBSITE (WWW.ANCHORINC.COM) FOR SOIL IDENTIFICATION & PULL-OUT CAPACITY OF STAKES.


F3 FRAME TENT
30' x 50' TENT - 1500 SQ. FT.
• (14) 1" WEB GUYS WITH RATCHETS
• (28) 1" x 30" STAKES

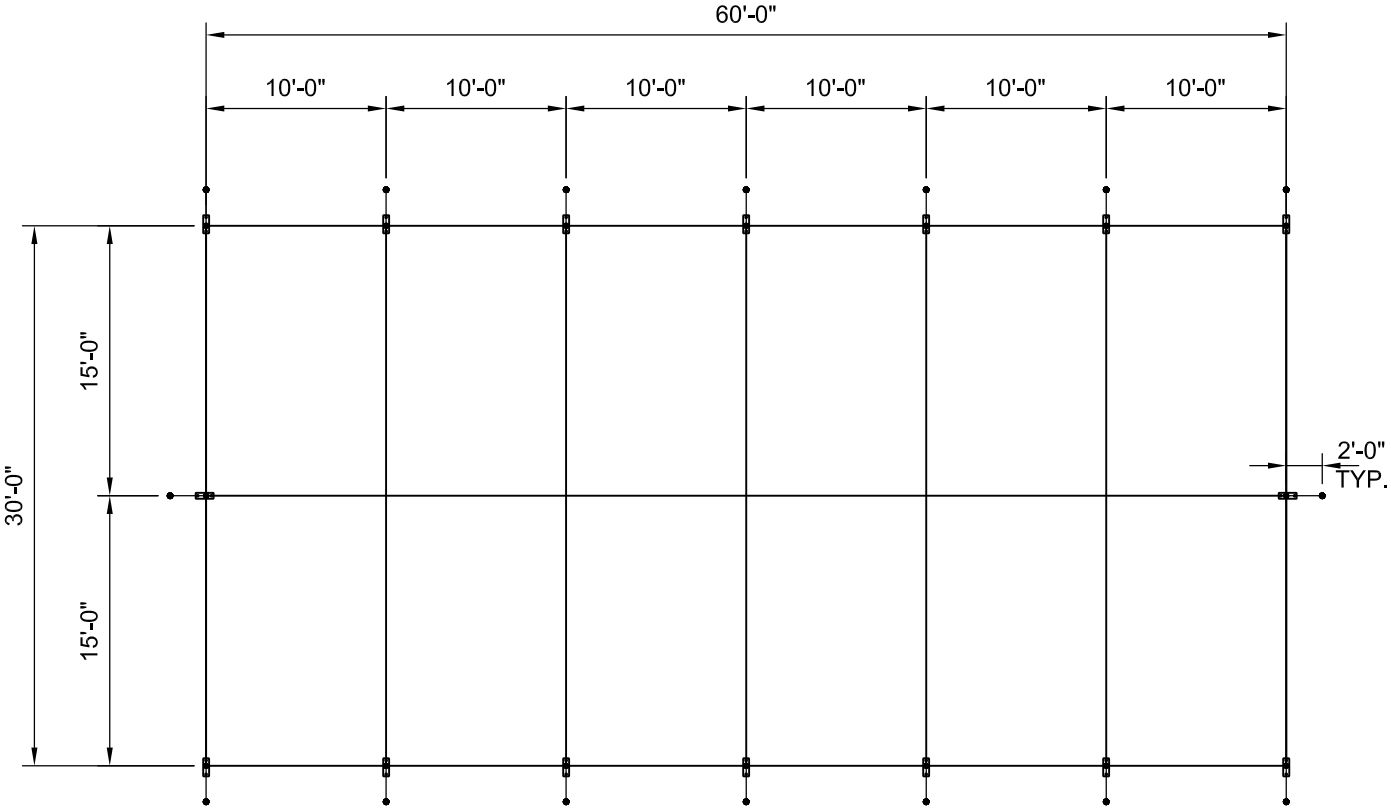
* SEE NOTES



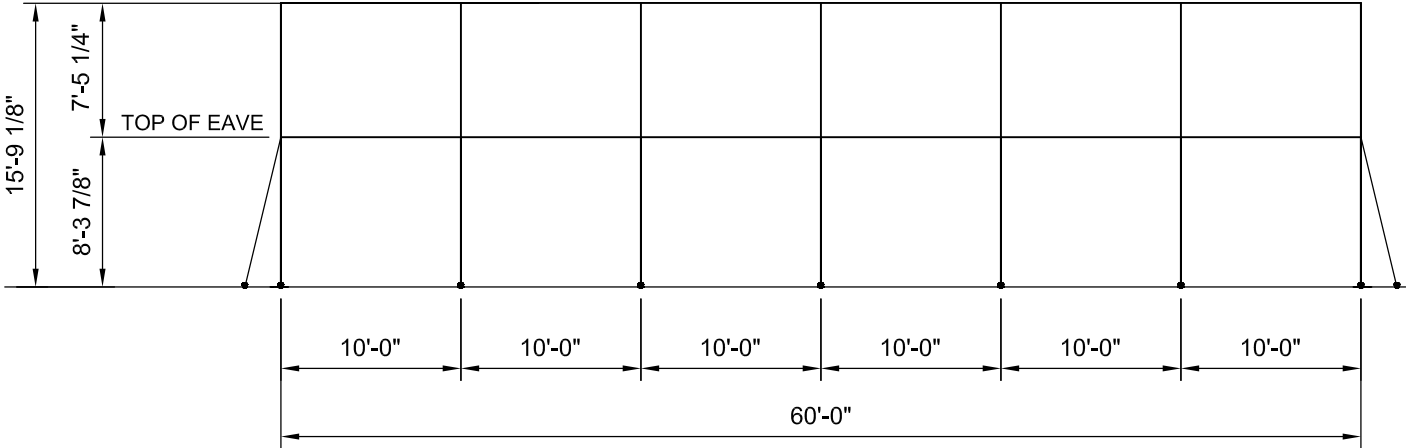
Caution:
Staking or anchoring is the responsibility of the installer. Soil conditions will dictate the number of stakes or anchors required. **Do not use this drawing to determine staking requirements.** Contact Anchor for Engineering loading data that can be used in conjunction with IFAI methodologies to determine site specific anchoring requirements.

1		2/29/2016	DMK
REV	EC	DATE	BY
REVISION HISTORY			

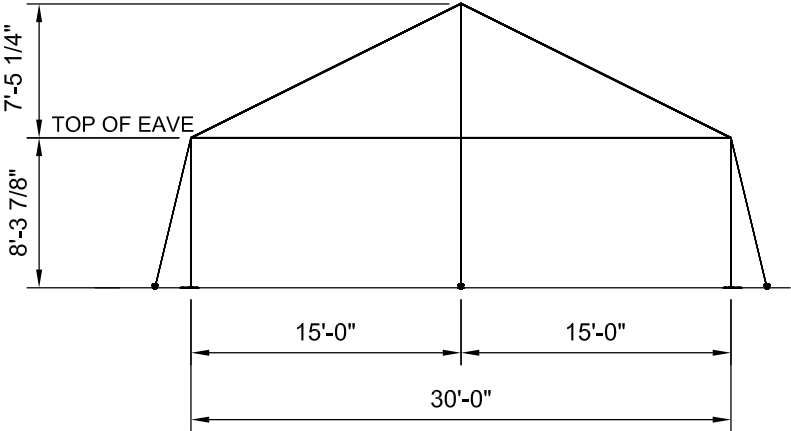
ITEM DESCRIPTION			ITEM NO.
 <small>All data and information contained in or disclosed by this document is confidential and proprietary information of Anchor Industries, Inc. and all rights therein are expressly reserved. By accepting this material the recipient agrees that this material and the information contained therein is held in confidence and in trust and will not be used, copied, reproduced in the whole or in part, nor its contents revealed in any manner to others except to meet the specific purpose for which it was delivered.</small>			
F3 BROCHURE DRAWING			
30' x 50' GABLE END FRAME W/(5) 10' MIDS			
DRAWN BY:	DMK	CHECKED BY:	DRAWING NO. 15-284-4-3
APPROVED BY:		DATE: 08-17-2015	



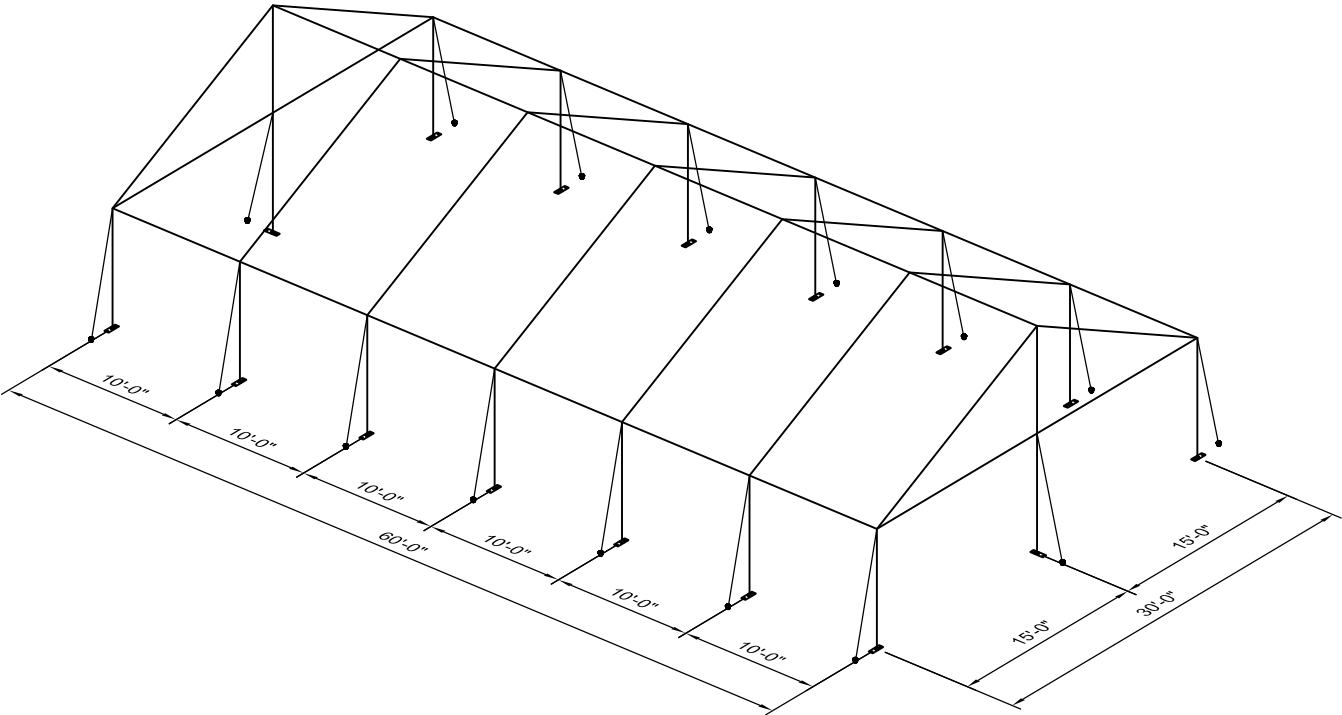
PLAN VIEW



SIDE VIEW



END VIEW



3D VIEW

NOTES:


1. SEE THE I.F.A.I. STAKING GUIDE ON OUR WEBSITE (WWW.ANCHORINC.COM) FOR SOIL IDENTIFICATION & PULL-OUT CAPACITY OF STAKES.

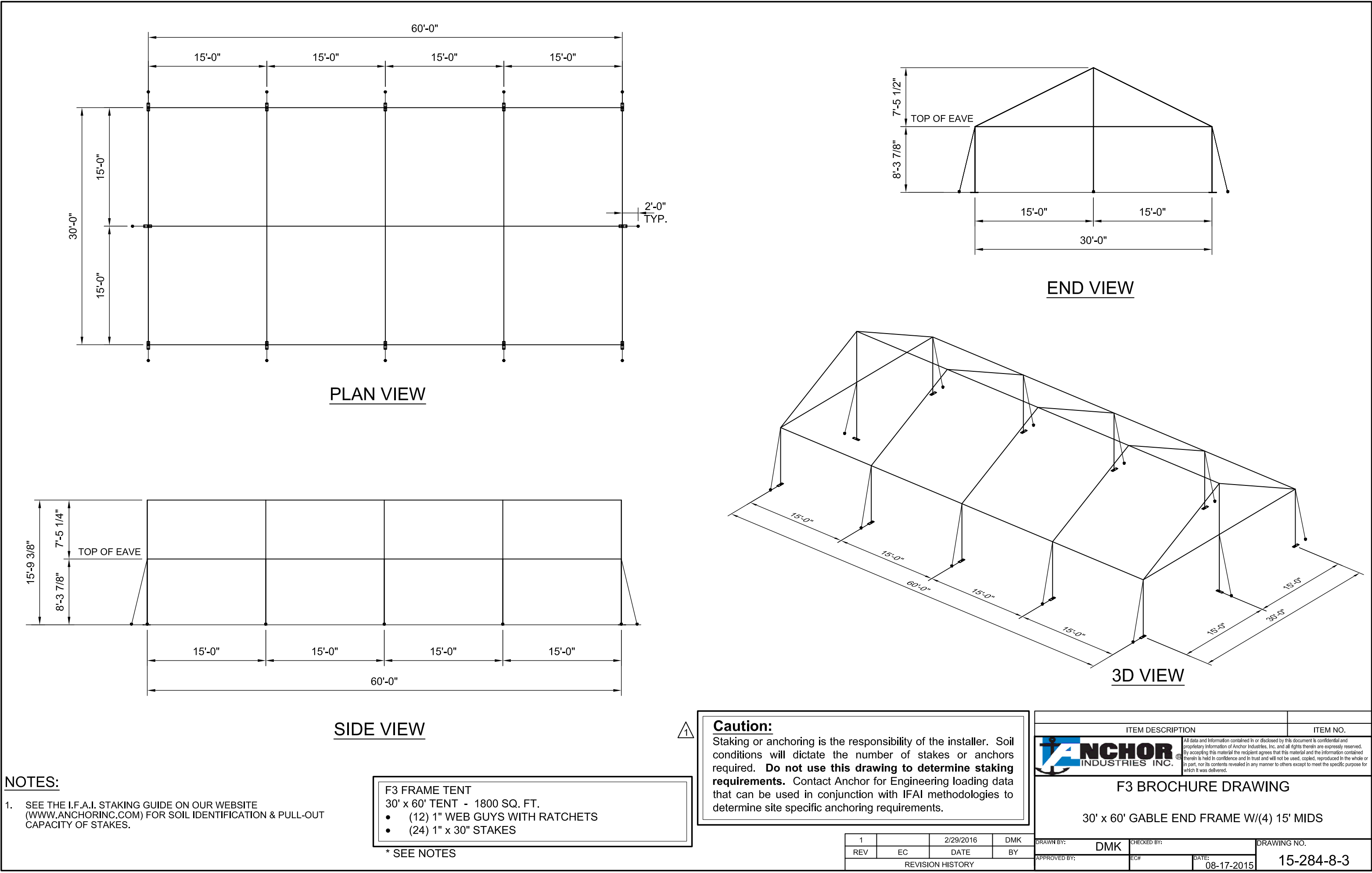
F3 FRAME TENT
30' x 60' TENT - 1800 SQ. FT.
• (16) 1" WEB GUYS WITH RATCHETS
• (32) 1" x 30" STAKES

* SEE NOTES

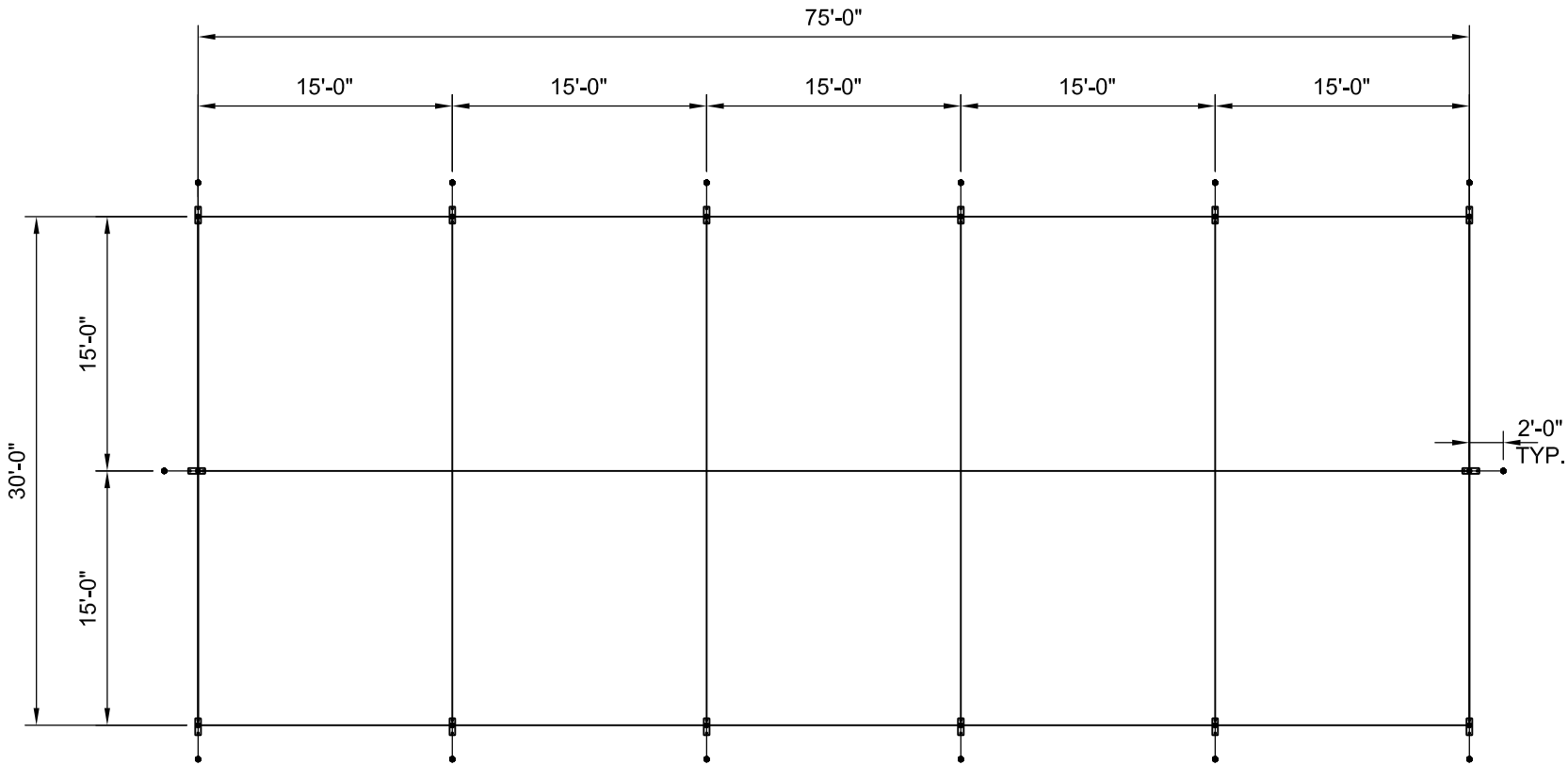
Caution:
Staking or anchoring is the responsibility of the installer. Soil conditions will dictate the number of stakes or anchors required. **Do not use this drawing to determine staking requirements.** Contact Anchor for Engineering loading data that can be used in conjunction with IFAI methodologies to determine site specific anchoring requirements.

1		2/29/2016	DMK
REV	EC	DATE	BY
REVISION HISTORY			

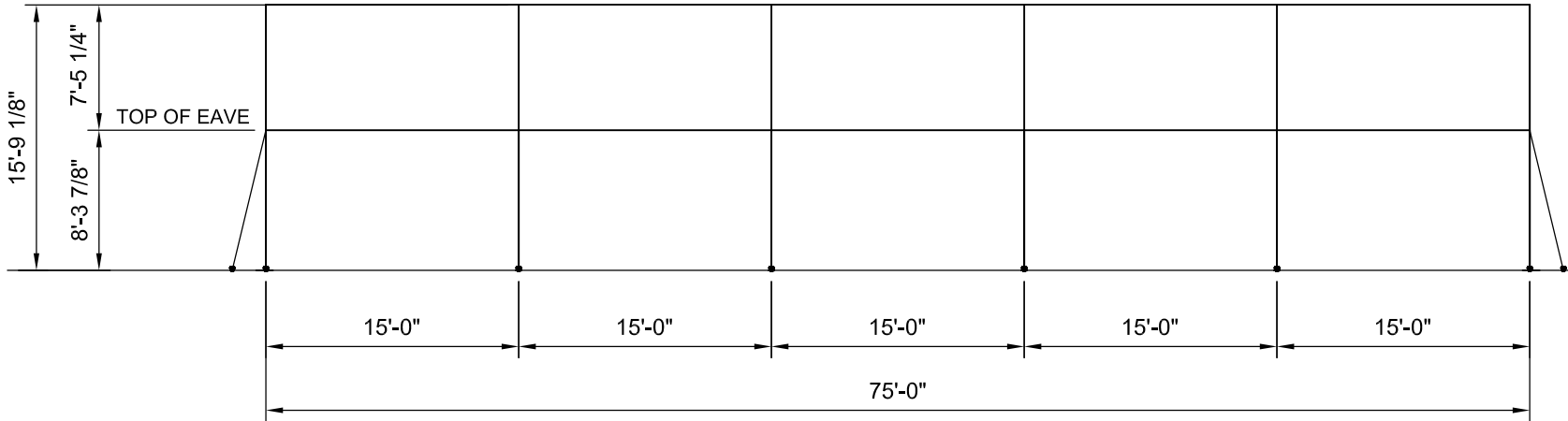
ITEM DESCRIPTION		ITEM NO.
		
F3 BROCHURE DRAWING		
30' x 60' GABLE END FRAME W/(6) 10' MIDS		
DRAWN BY: DMK	CHECKED BY:	DRAWING NO.
APPROVED BY:	EC#	DATE: 08-17-2015
		15-284-4-4



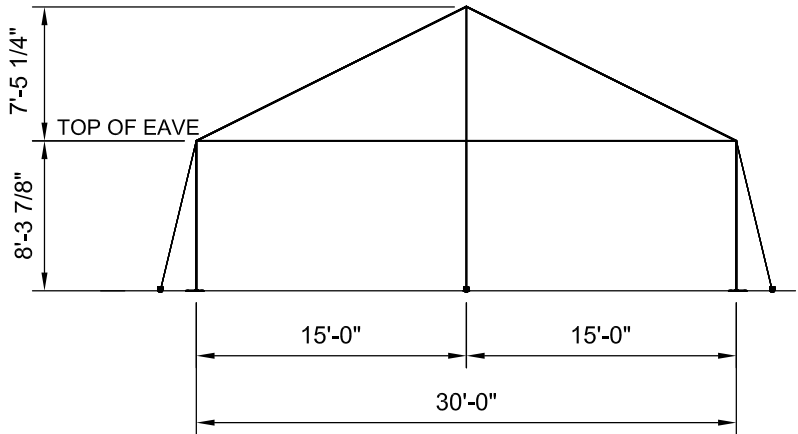
J:\Brochure Drawings\F3\15-284-8X.dwg, 3/1/2016 8:39:31 AM, Adobe PDF



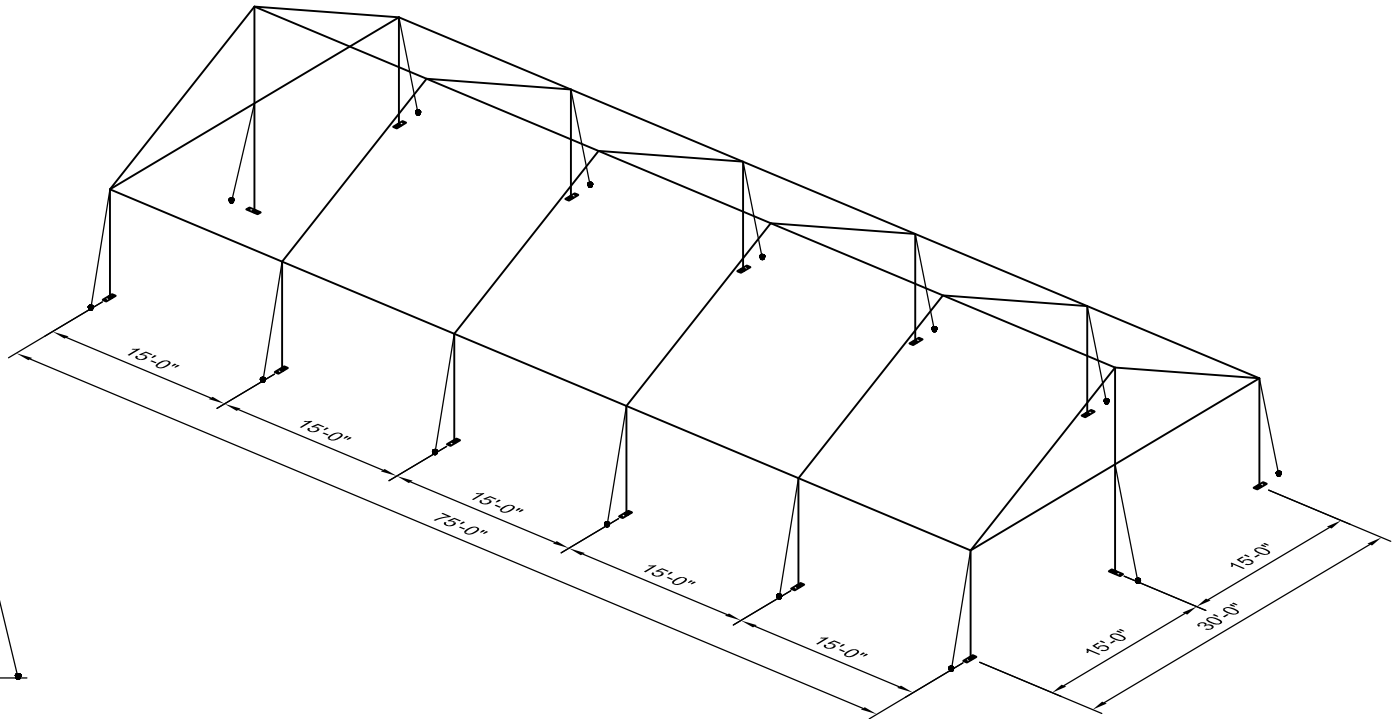
PLAN VIEW



SIDE VIEW



END VIEW



3D VIEW

NOTES:


1. SEE THE I.F.A.I. STAKING GUIDE ON OUR WEBSITE (WWW.ANCHORINC.COM) FOR SOIL IDENTIFICATION & PULL-OUT CAPACITY OF STAKES.

- F3 FRAME TENT
30' x 75' TENT - 2250 SQ. FT.
• (14) 1" WEB GUYS WITH RATCHETS
• (28) 1" x 30" STAKES

* SEE NOTES

Caution:
Staking or anchoring is the responsibility of the installer. Soil conditions will dictate the number of stakes or anchors required. **Do not use this drawing to determine staking requirements.** Contact Anchor for Engineering loading data that can be used in conjunction with IFAI methodologies to determine site specific anchoring requirements.

1		2/29/2016	DMK
REV	EC	DATE	BY
REVISION HISTORY			

ITEM DESCRIPTION		ITEM NO.
 All data and information contained in or disclosed by this document is confidential and proprietary information of Anchor Industries, Inc. and all rights therein are expressly reserved. By accepting this material the recipient agrees that this material and the information contained therein is held in confidence and in trust and will not be used, copied, reproduced in the whole or in part, nor its contents revealed in any manner to others except to meet the specific purpose for which it was delivered.		
F3 BROCHURE DRAWING		
30' x 75' GABLE END FRAME W/(5) 15' MIDS		
DRAWN BY: DMK	CHECKED BY:	DRAWING NO.
APPROVED BY:	EC#	DATE: 08-17-2015
		15-284-8-4