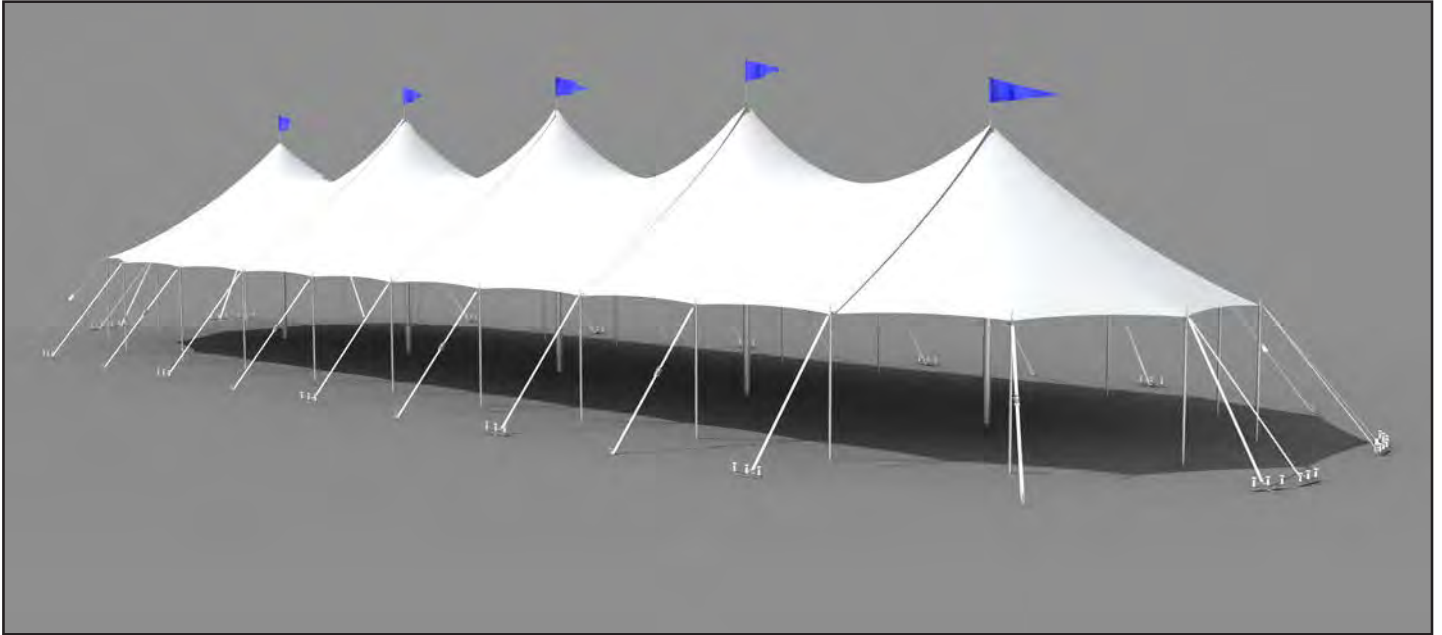


Installation Instructions

32' Aurora Tent

Non-Certified Installation

Modified from Fully Certified Version



Please read all assembly / installation instructions before the installation or removal of this product.



7701 Highway 41 N
Evansville, IN 47725
Phone: 812-867-2421
Fax: 812-867-1429
1-800-544-4445
email: tents@anchorinc.com
www.anchorinc.com

Index

Introduction.....3

 Safety Notes..... 3

 Parts Illustrations..... 4

 Part Numbers Chart.....5

 Stake and Pole Layout..... 5

 Tent Layout..... 6

 Staking.....6

 Lacing..... 6

 Lace Flap.....7

 Attach Guys..... 7

 Raise Poles..... 8

 Winch Tensioning..... 8

 Final Adjustment..... 9

 Take Down..... 9

 Walls.....9

 Flag Pole Installation.....10

 More Staking Layouts.....11

 Queen/King Mids - Left, Right Designation.....12

 Caution Statement.....13

Introduction

The installation of this Aurora Tent should be performed/supervised by knowledgeable tent installers with a clear understanding of safety issues as well as the methods of anchoring. The requirements as specified must be followed. The installer/owner must read the assembly instructions completely prior to any installation. Particular attention must be given to anchoring! See Caution Statement on back page of this manual

Work from step to step.

Before erecting any tents or membrane structures, first obtain permits and approvals as required from the local building and fire code officials on the jurisdiction of your installation.

PLEASE PAY SPECIAL ATTENTION TO SAFETY WARNINGS AND CAUTIONS FOR PREVENTION OF ACCIDENTS.

Regarding the contents of this document:

The illustrations and photos are made to show clearly the construction and dismantling procedures and also for identification of the components. Not all illustrations/photos correspond to the actual dimensions and size. Explanations and/or notes have been added to these illustrations/photos.

If you have questions, please call your sales representative at the phone number listed on the front of this manual.

Safety Notes

- Please read through this assembly manual completely before beginning your installation. Be sure the proper equipment and safety precautions are in place. We hope that you enjoy the design features of the tent each time the unit is installed.
- Consult your local **utility locator service** or the **National Utility Locating Contractors Association (NULCA)** prior to installation.
- Prior to actual tent assembly, be sure to look up, down, above & below for obstacles, pipes, wires, trouble, etc.
- Be alert to avoid contact of Tent poles with any overhead power lines near the site.
- Keep site clear of debris to avoid tripping, especially while carrying tent poles or bundle of fabric.
- When moving tent sections by hand, use proper lifting techniques to protect the back.
- The installation method described here requires coordination of tasks between workers. A safe installation is dependent on that coordination. Work cooperatively as a team.
- Replace used or damaged components with original new ones.
- To prevent injuries, wear suitable protective clothing such as hard hats, steel toed shoes, etc.
- Do not drag bundle of fabric on concrete, asphalt, or ground as this can cause damage to the fabric from abrasion through the bag.
- This tent is manufactured for use as a temporary structure. Evacuation is recommended if threatening or windy weather occurs. See caution on back page of this manual.
- Anchor uses a nominal safety factor of at least 2 when figuring staking guidelines.

*** IMPORTANT NOTE:** REFER TO CAUTION STATEMENT #2 ON THE BACK PAGE OF THIS MANUAL FOR IMPORTANT WARNING ABOUT NUMBER OF STAKES SUPPLIED.

THE INSTALLER MUST USE THE LOCAL SOIL CONDITIONS TO CALCULATE THE ACTUAL NUMBER OF STAKES REQUIRED AND IS RESPONSIBLE FOR THE STAKING PATTERN AND CONFIGURATION.

IMPORTANT:

The installation of this Tent should be performed/supervised by knowledgeable tent installers with a clear understanding of safety issues as well as the methods of anchoring. The installer/owner must read the assembly instructions completely prior to any installation. Particular attention must be given to anchoring! See Caution Statement on back page of this manual.

MANPOWER REQUIRED

Four experienced installers should be able to assemble a 32' x 51' tent in approximately four hours.

TOOLS REQUIRED

Sledge Hammers
Stake Driver
2 Measuring Tapes

INSPECT SITE

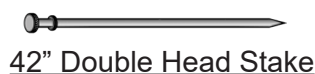
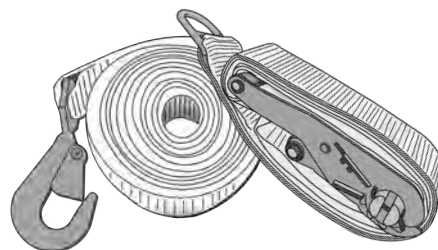
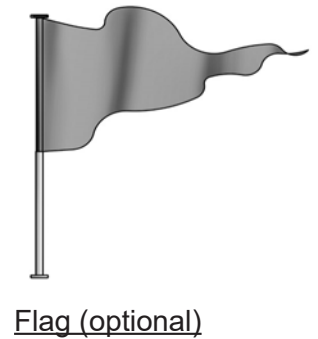
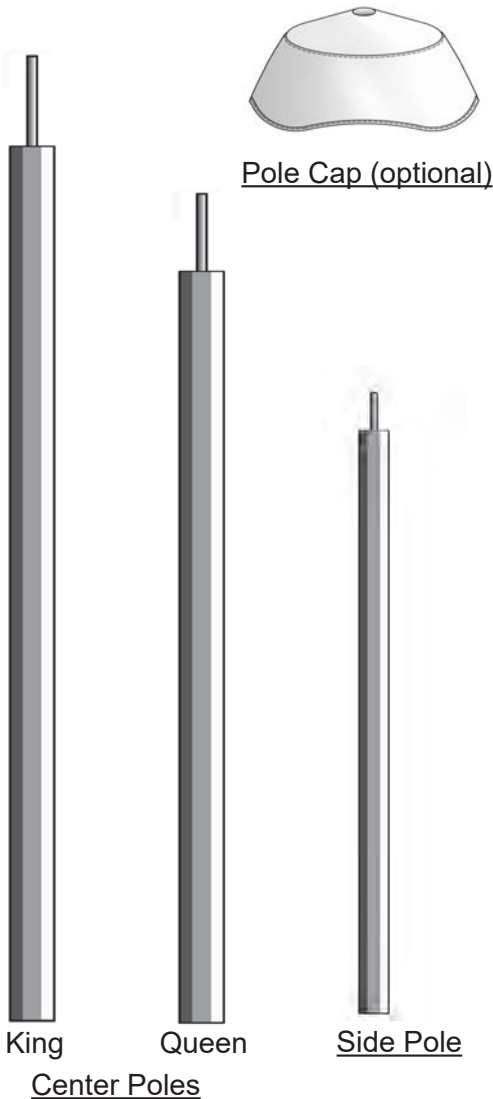
Caution:

Consult your local utility locator service or the National Utility Locating Contractors Association (NULCA) prior to installation. Prior to actual tent assembly, be sure to look up, down, above & below for obstacles, pipes, wires, trouble, etc.

LAYOUT & CHECK

Utilize parts list for a quick I.D. and a check list to ensure that you have all the parts.

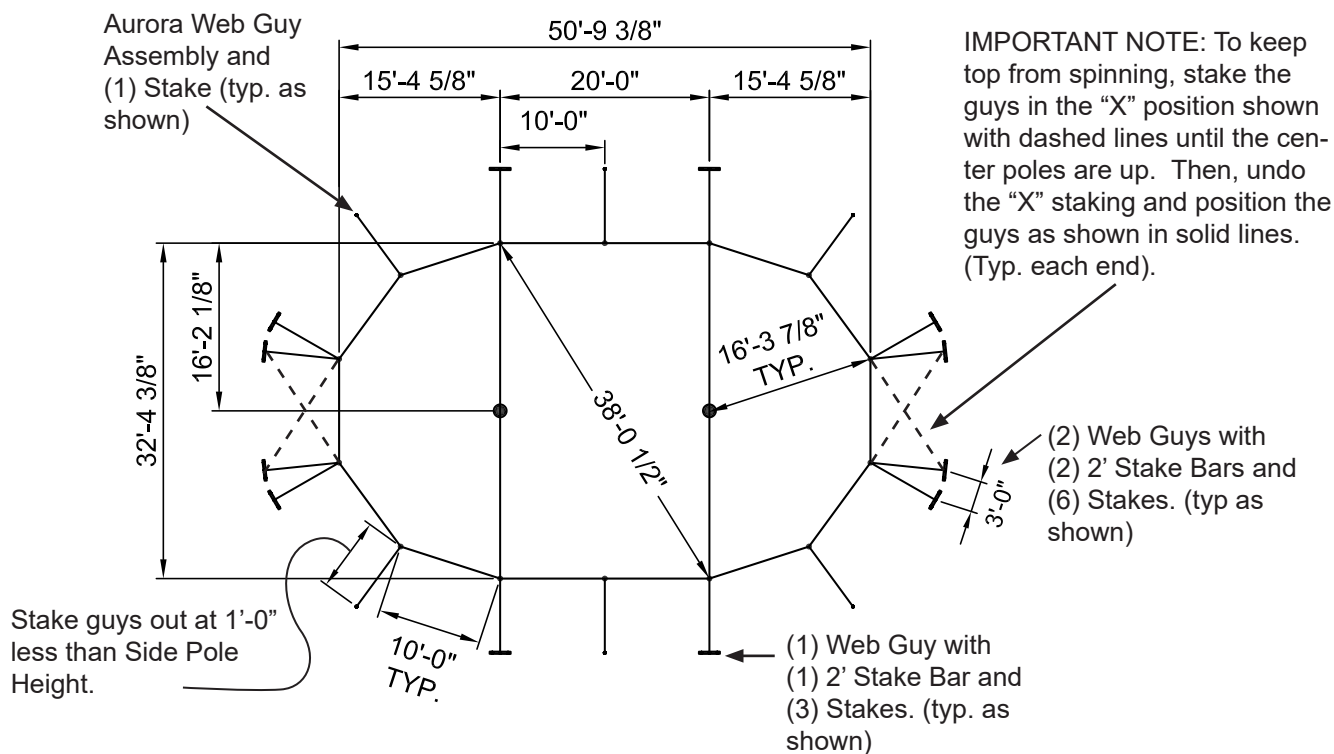
Parts Illustrations



Part Numbers Chart

PART NUMBERS AND DESCRIPTIONS	
	Install/Staking
33000	2' Stake Bar
23000	2" Web guy and winch (22015 & 33200)
8048617	Aurora web guy assembly
3704242	Stake 1 1/8" x 42" - Double Head
8048638	Install. Kit (Layout Cable, 4 Web Loops, 4 Web Guys)
8048639	32' W Installation Layout Cable only
	Fabric
8048641	32' W x 15' End Loop Sheer White
8048640	32' W x 15' End Hole Sheer White
8048645	32' W x 20' Mid QQ Sheer White
8048644	32' W x 20' Mid QK Right Sheer White
8048643	32' W x 20' Mid QK Left Sheer White
8048642	32' W x 20' Mid KK Sheer White
8048627	Aurora Weathershield Wall 7' X 10' Sheer White
8048628	Aurora Weathershield Wall 7' X 10' Clear Vinyl
8048629	Aurora Weathershield Wall 8' X 10' Sheer White
8048630	Aurora Weathershield Wall 8' X 10' Clear Vinyl

STAKING LAYOUT



- 1 Stake and Pole Layout for Tent:** Using the Installation Layout Cable and/or the staking layout appropriate for your size tent, mark placement of Center Poles, Side Poles and Stakes.
See separate instructions for Installation Layout Cable use.

2 Tent Layout:

Lay Ground Cloth over the area to be covered by the tent. Unfold the tent top fabric over the ground cloth, with right side up. Unfold and stretch fabric out so that side pole plates match placement marked on ground.



3 Place Stakes:

See step one for where single guys and stake bars are used. For stake bars, place stakes through stake bar and winch plate where shown.

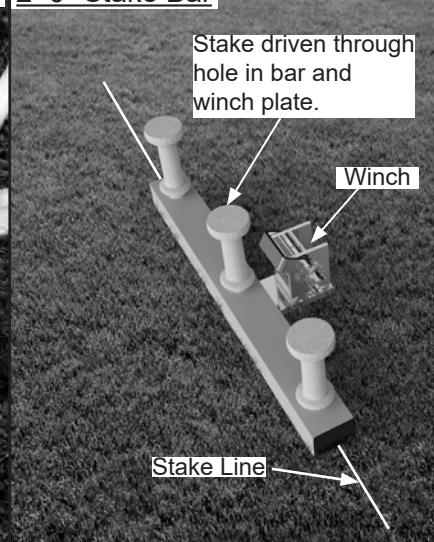
For single guys with stakes, place stake through web guy ring.

Drive stakes.

Aurora Web Guy with Single Stake



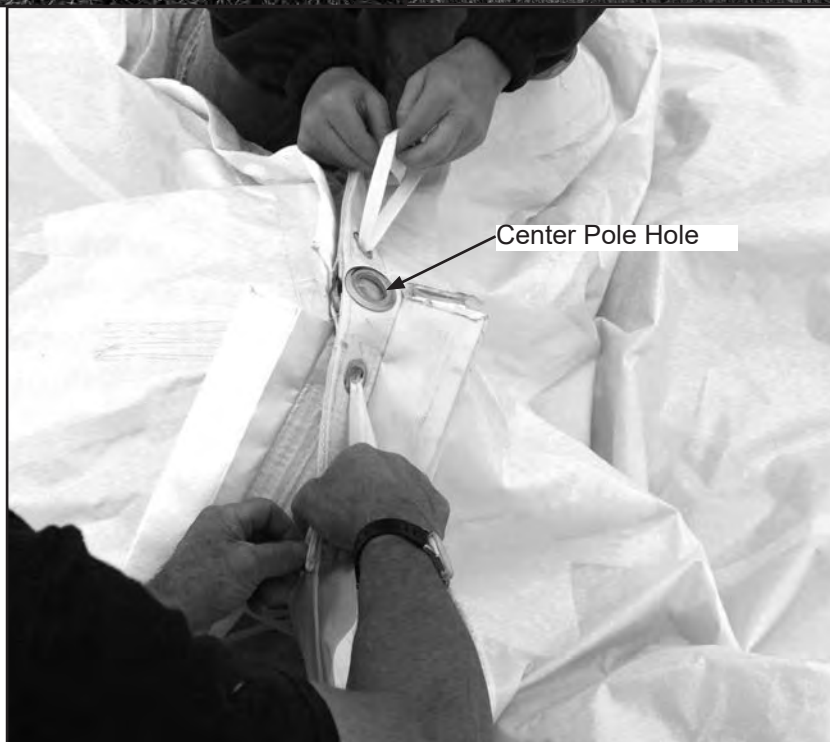
2'-0" Stake Bar



4 Lacing:

Starting at center pole hole, install the flag poles and flags at the peaks of the tent. Lace down to Eave Line.

Note: Flag pole is installed at center pole hole. For flag pole instructions, see page 10.



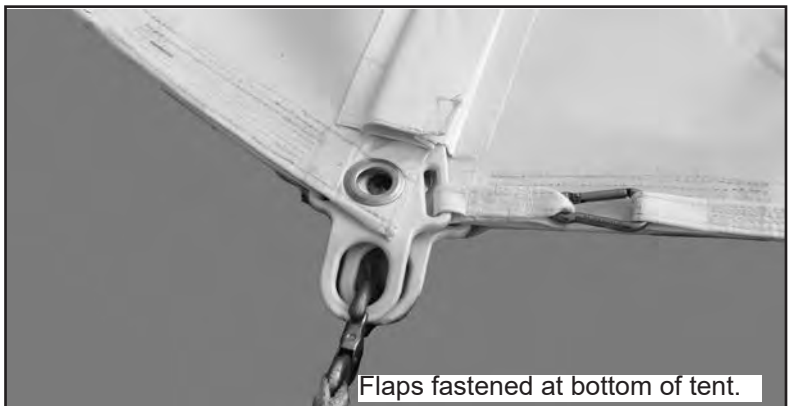
- 5 Finishing Lace:** At bottom of Lace, Tie off long loop to bottom loop as shown. Fasten snap to web loop.



- 6 Fastening Lace Flap:** Go back up to center pole hole and begin fastening flaps together. Walk on tent with stocking feet for protection of fabric. Insert flap on loop side between flaps of hole side.



- 7 Attach Guys:** Attach snaps of guys thru both plates at lace. Keep guys very loose. Attach the rest of the guy snaps around tent. Be sure that guys on ends are in the "X" position as shown in the staking layout on page 5.

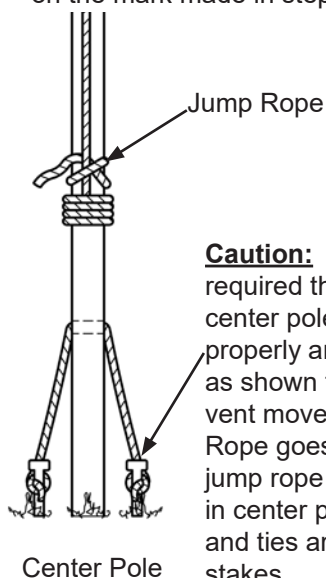


8 Raise Side Poles:

Insert the sidepoles into the grommets and plates around the perimeter. Stand up to nearly vertical and apply just enough tension on guys to keep poles in position.

9 Raise Center Poles:

From underneath the tent, insert the pin of the centerpole through the grommet at the peak and push the pole with the fabric up until the centerpole is vertical. The bottom of the pole should be positioned on the mark made in step one.



Caution: It is required that all center poles be properly anchored as shown to prevent movement. Rope goes thru jump rope hole in center pole and ties around stakes.

10 Winch for Tension:

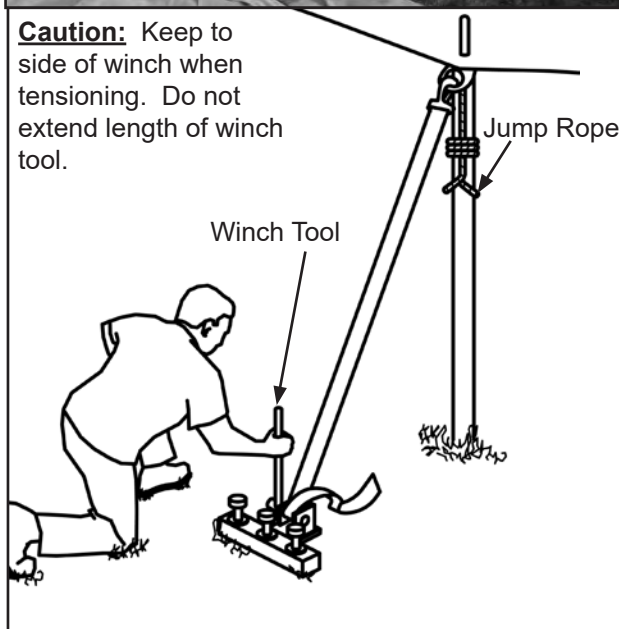
Straighten the side poles around the tent so that bottom of poles are positioned on their respective marks. Tension guy webs with ratchets all around tent until poles are vertical and plumb. Do not over-tension.

The following tensioning sequence is recommended for the best overall appearance:

1. Tension webs at the lace lines first.
2. Tension webs at the rounded corners.
3. Tension webs at the ends.
4. Tension webs at the valleys last.



Caution: Keep to side of winch when tensioning. Do not extend length of winch tool.



- 11 Final Adjustment:** Due to changes in climactic conditions, periodic inspection and adjustment should be made. Protective covers are recommended for all stakes and stake bars.

Important: Check guys periodically for tightness and maintenance of good condition.

Proper installation suitable to site conditions is the responsibility of the installer.

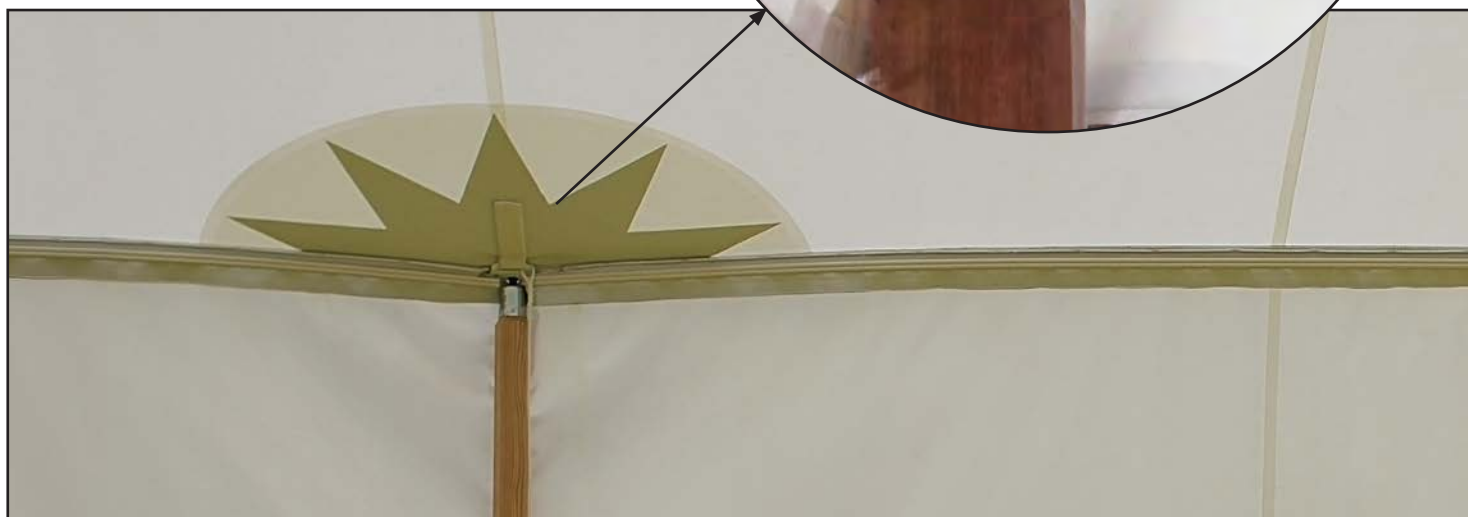
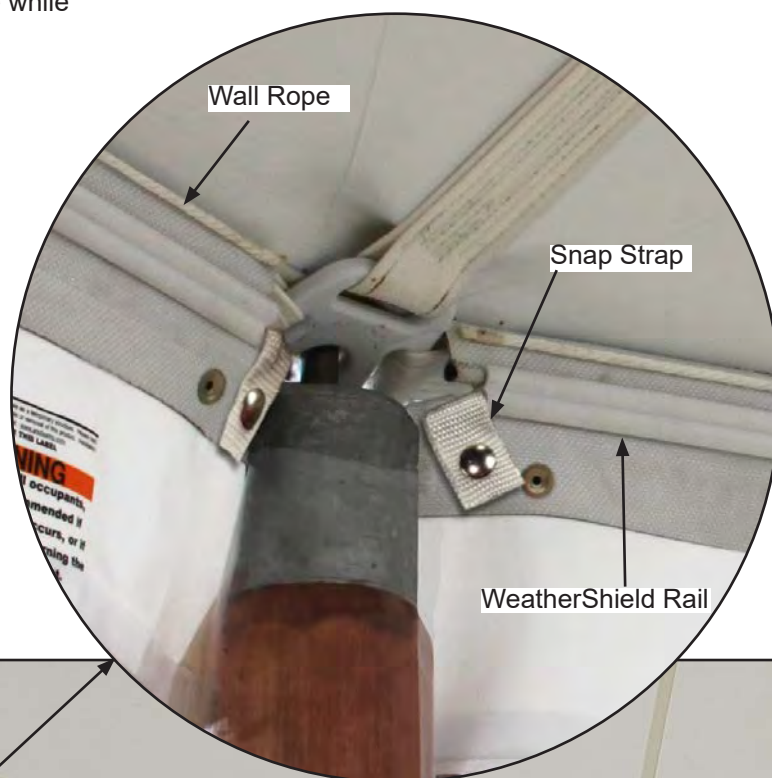
12 Take Down:
Use extreme caution removing all poles.

1. Spread ground cover.
2. Loosen tension on all web winches.
3. Slant side poles inward.
4. Remove center and side poles.
5. Reverse installation steps.
6. Store tent in a cool, dry area. Never store while wet or damp.

13 Walls:

Standard walls: Install top of walls by clipping the top hooks of wall to wall-rope around the eave of the tent.

WeatherShield walls: Slide the Aurora WeatherShield Rail onto the wall keder and use snap straps on each end of wall to lock the rail in place. Then slide the WeatherShield Rail onto eave keder of tent.



Aurora Flag Pole Installation Instructions

Knurled Knob screwed into top of pole to secure PVC Flag assembly on pole.

PVC Flag Assembly fitted onto Flag Pole

Flag pole.

Flange welded to Flag Pole

Top holes of tent fabric at lace. (cut away for clarity)

Bottom Flange of Flag Pole

Center Pole.

Tent is trapped between welded Flange and bottom Flange.

Properly Installed Flag Pole

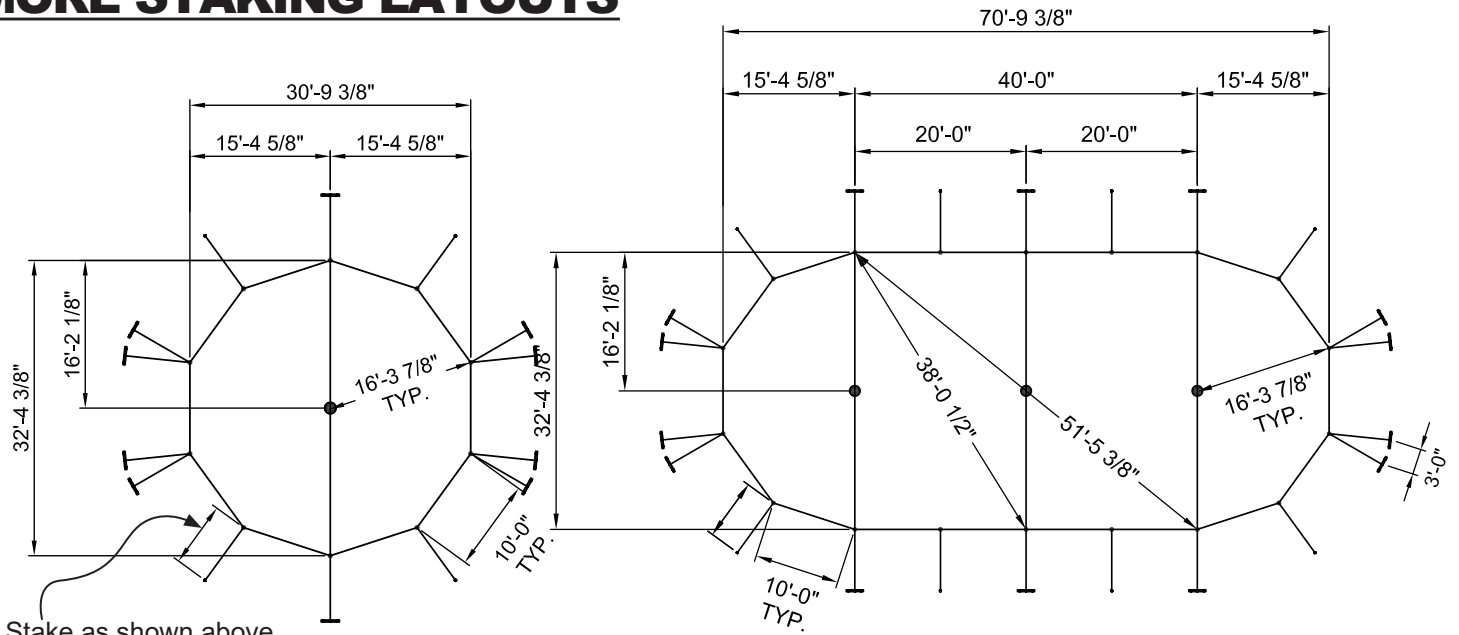
PART NUMBERS AND DESCRIPTIONS

Number	Description
8048990	Aurora Flag Pole Kit - Includes knurled knob, pole and bottom flange(no fabric)
8048624	Aurora Flag Ass'y 18" x 120" Blue w/ PVC
8048626	Aurora Flag Ass'y 18" x 120" White w/ PVC
8048623	Aurora Flag Ass'y 18" x 54" Blue w/ PVC
8048625	Aurora Flag Ass'y 18" x 54" White w/ PVC

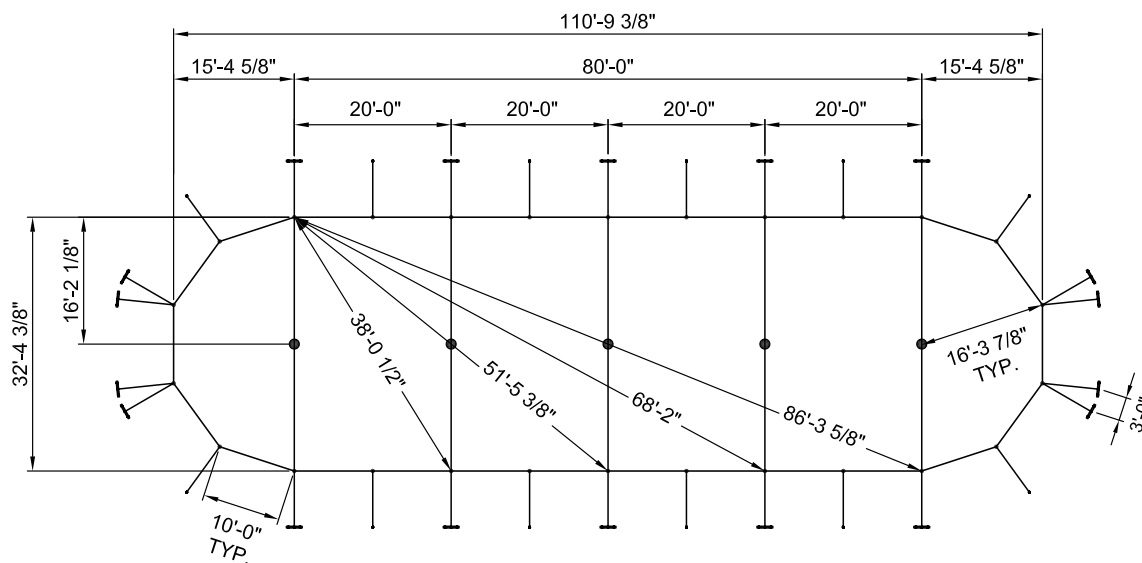
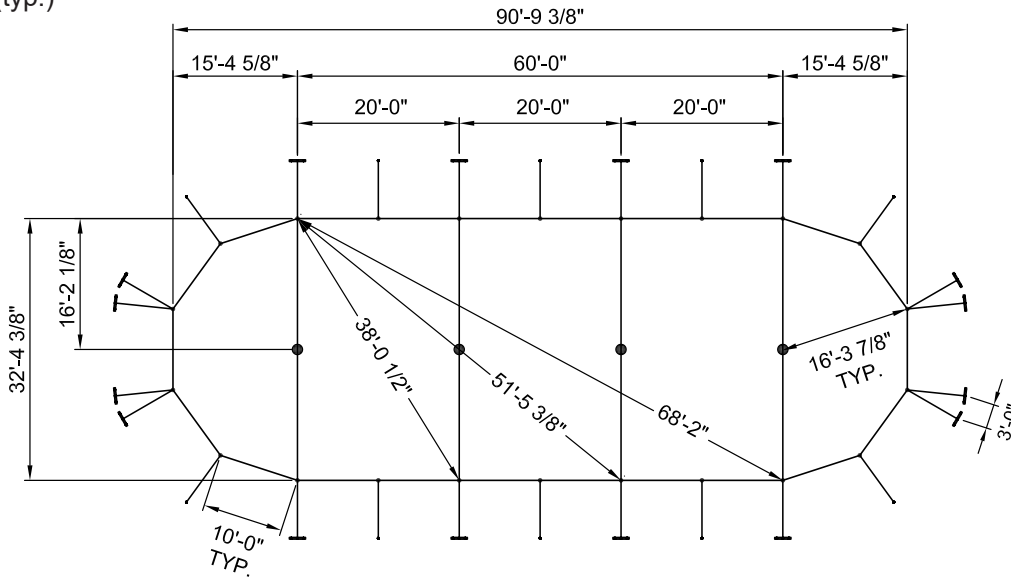
STEPS

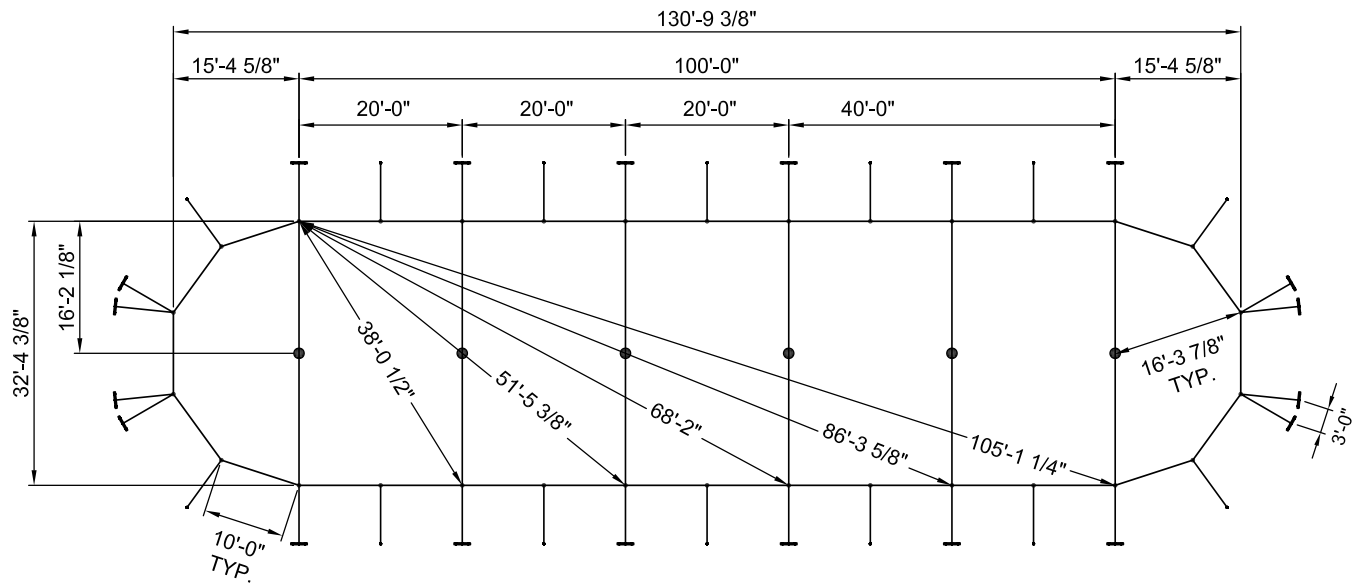
1. Fit center pole holes of mating fabric pieces together and lace a couple of holes each side.
2. Slide flag PVC assembly down over top of flag pole.
3. Screw Knurled Knob into top of flag pole, leaving clearance for PVC flag assembly to freely rotate around pole.
4. Slide Flag Pole down into top holes of tent.
5. Underneath tent, screw Bottom Flange to bottom of Flag pole until snug.
6. Slide Center pole pin into Bottom Flange and up thru Flag pole.

MORE STAKING LAYOUTS

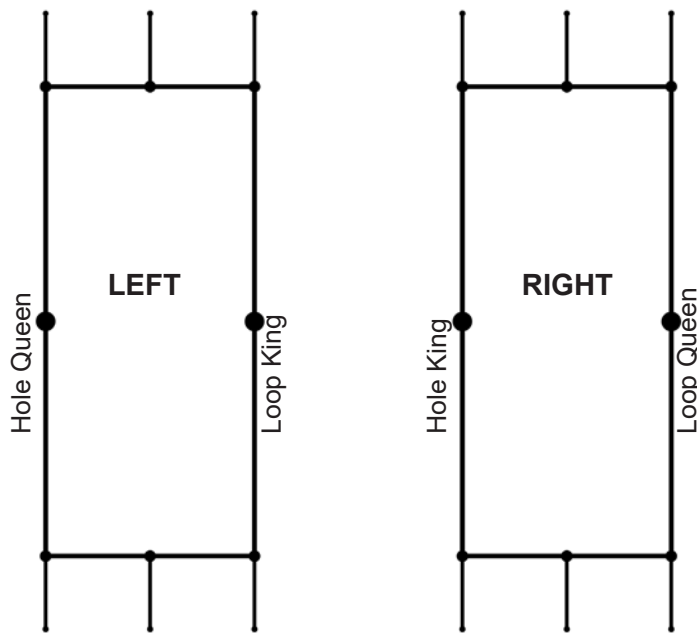


Stake as shown above.
Guys are at 1'-0" less
than side pole height.
(typ.)

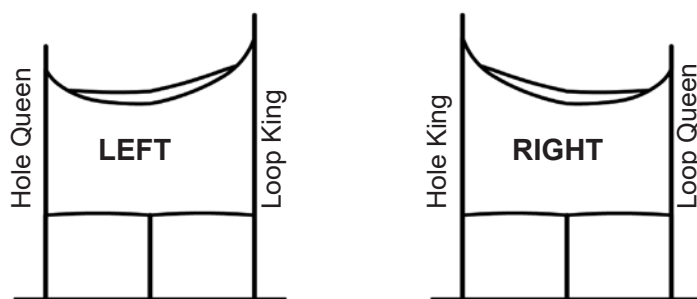




QUEEN/KING MIDS - LEFT RIGHT DESIGNATION



PLAN VIEW



SIDE VIEW



PHONE NUMBER
812 · 867 · 2421

FAX NUMBER
812 · 867 · 1429

Anchor products are of superior design and operate best within the parameters of these instructions. It is imperative that the instructions be carefully read and **COMPLETELY FOLLOWED**. Please read installation instructions before the installation or removal of this product. Installation instructions are available online at www.anchorinc.com or by calling 1-800-544-4445.

WARNING

1. For each installation, the installer is solely responsible for evaluating the site and the proper securing method determined. Some soils require different staking or securing than that provided with the tent. Due to this variety of soil conditions, these are the manufacturer's suggested sequence of installation procedures. Anchor's responsibility is limited to the manufacture of the tent parts and materials. We are not responsible for methods that installers may choose to erect and secure the tent to the ground.
2. The number of stakes suggested in the installation instructions do not necessarily meet all or any relevant codes on the site of the tent installation. The number of stakes suggested **will, in many cases, keep the tent erected**, however, due to various soil conditions; these stakes will be insufficient **to keep the tent secure in high winds**. It is the tent installer's responsibility, not the manufacturer, to determine the appropriate number of stakes to meet the necessary wind loads on the site. Regardless of the number of stakes we suggest, we make no representation or warranty as to whether this specific number of stakes will meet the local tent code. Anchor does not, nor can it make any suggestions, representation, or warranties about the adequate staking required at each specific installation site. Staking information provided in the installation instructions **is not a suggestion about what is necessary to meet a site-specific load**.

For additional important information, consult: "The IFAI Procedural Handbook For the Safe Installation and Maintenance of Tentage" and the IFAI Pocket Guide "Pullout Capacity of Tent Stakes", both available from the IFAI Tent Rental Division on their website (www.ifai.com).

3. Inasmuch as the weather is unpredictable, good judgment and common sense must be incorporated within installation guidelines. It is the responsibility of the tent installer/maintainer to determine the severity of the weather, proper time and method of installation and/or erection and disassembly. **Note: We recommend that snow and ice be removed from the tent surface as soon as possible because accumulation will damage the tent or fabric structure. Please consult with our Engineering Department about the maximum loads for each product.**

This product has been manufactured for use as a temporary structure. For the safety of all occupants, evacuation is recommended if threatening weather occurs, or if there is any doubt concerning the safe use of this product.

4. Proper safety equipment should be used at all times to ensure a safe installation and take down. We suggest a careful evaluation be made to determine safety equipment needed, such as hard hats, steel-toe shoes, safety glasses and other as required. It is our desire that all installations are safe. Please be aware of hidden dangers both underground, i.e., gas lines, water lines, electrical lines, etc. and above the tent such as power lines and telephone lines.
5. Anchor stands behind its products in accordance with its standard Terms and Conditions of sale. A copy of our Terms and Conditions of Sale can be obtained by contacting Anchor at the telephone number and/or address on this document.