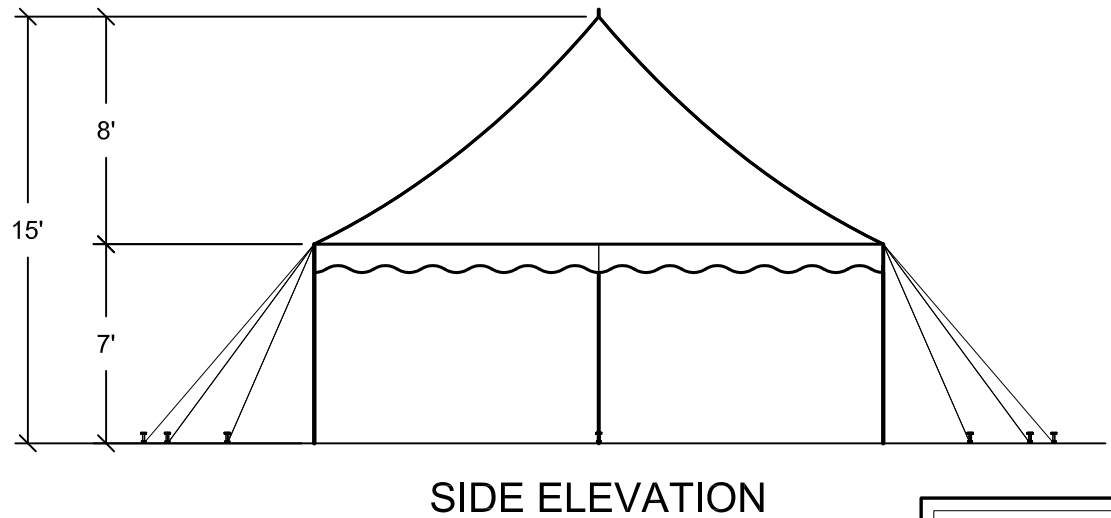
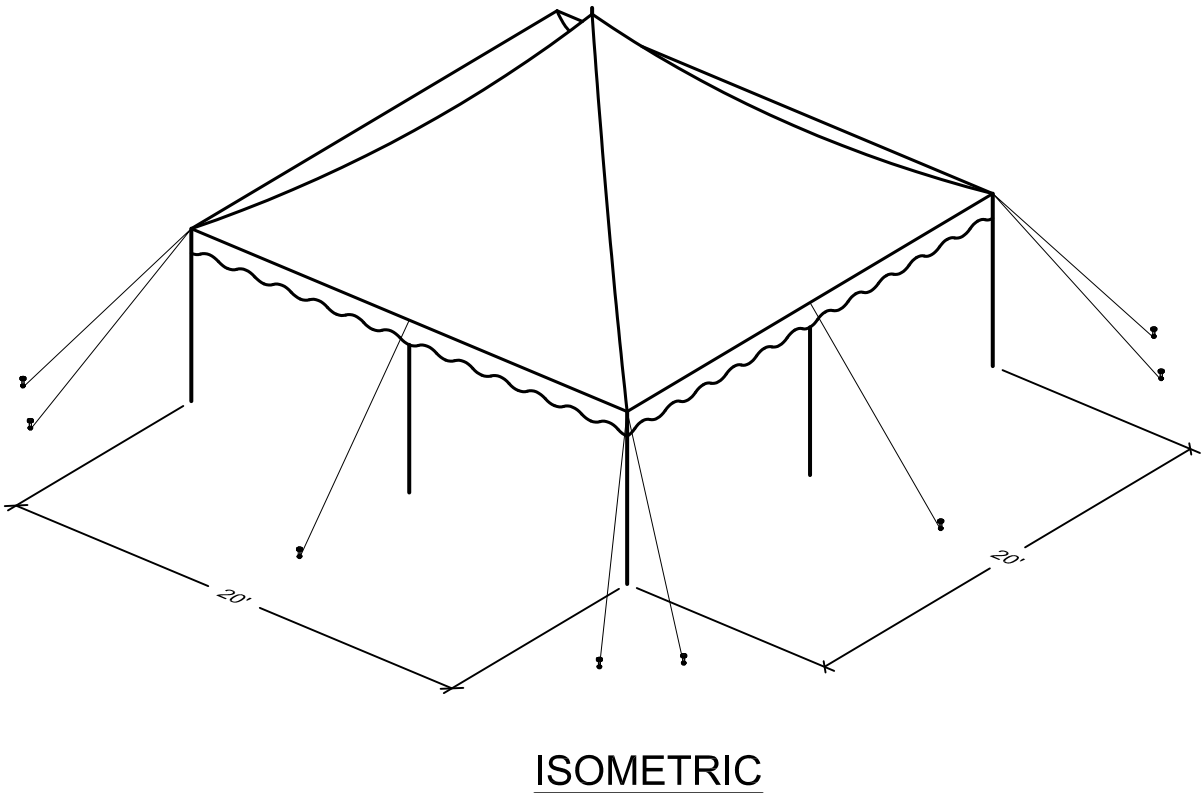
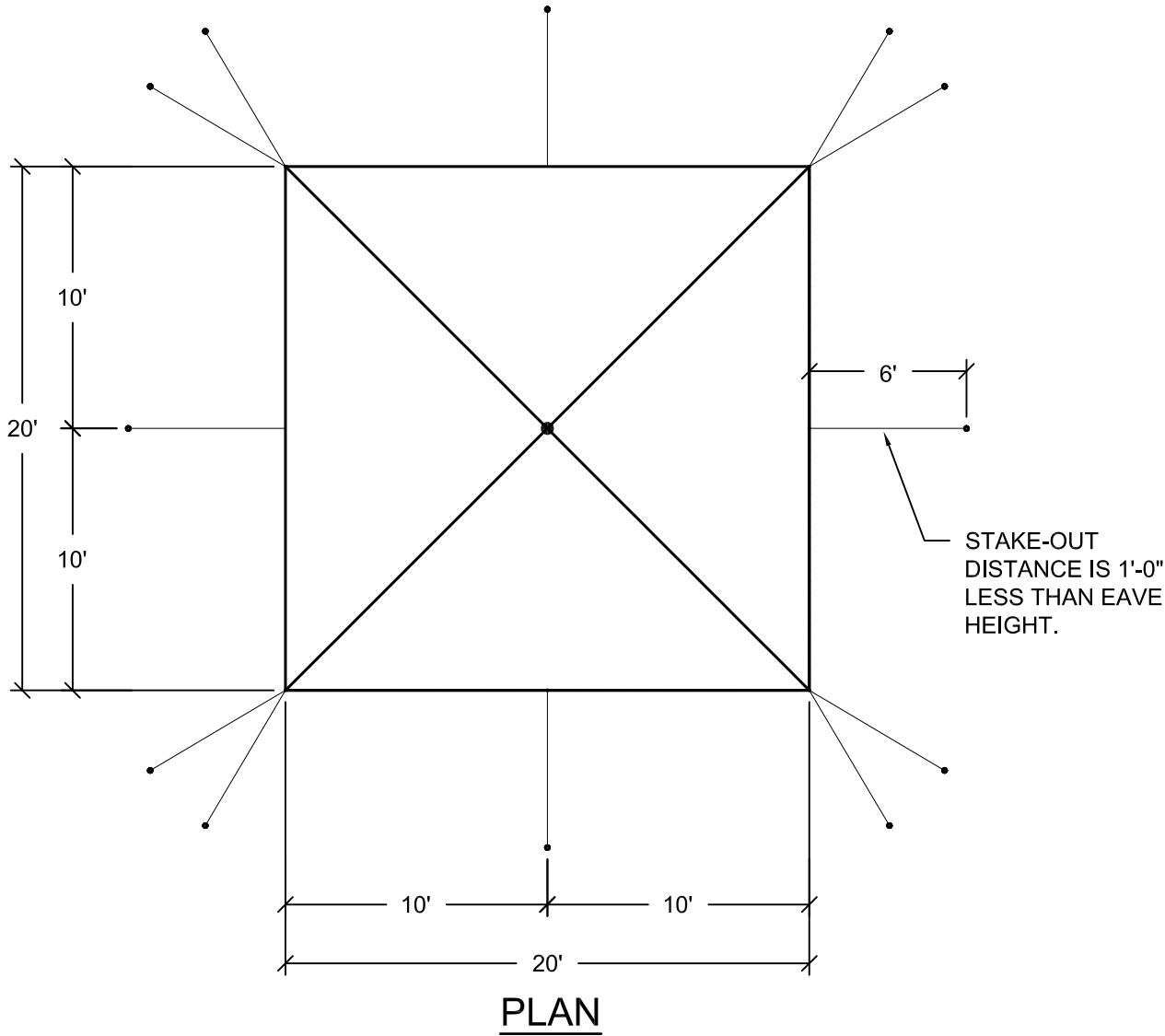


J:\Brochure Drawings\Century Mate\H-line custom\08-401-1-1.dwg, 3/2/2016 2:08:25 PM, Adobe PDF



- 20' x 20' (1) PC. TENT - 400 SQ. FT.
- (8) SIDE POLES
 - (1) CENTER POLES
 - (12) 1" WEB GUYS WITH RATCHETS
 - (12) 1" x 30" STAKES

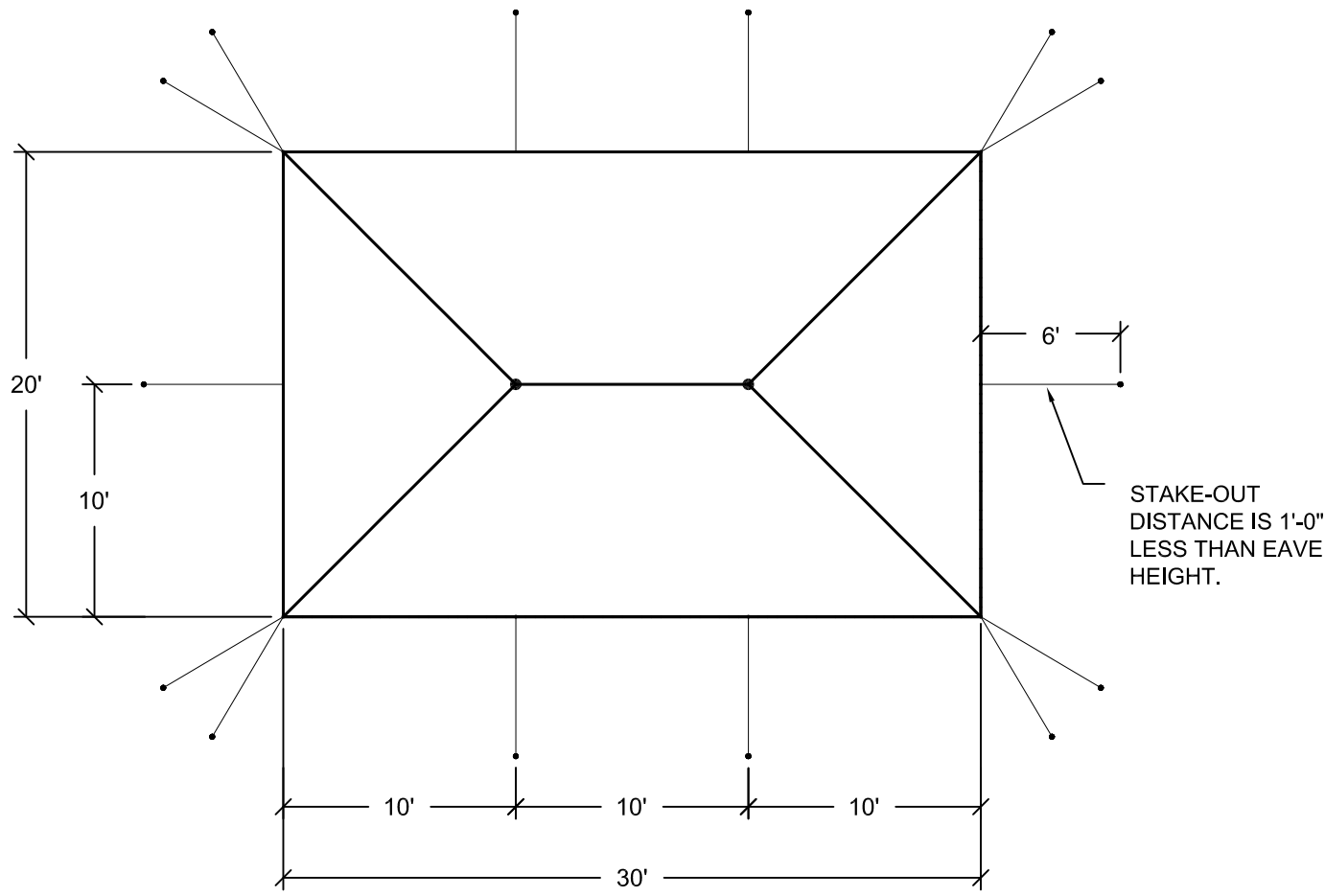
NOTES:

1. SEE THE I.F.A.I. STAKING GUIDE ON OUR WEBSITE (WWW.ANCHORINC.COM) FOR SOIL IDENTIFICATION & PULL-OUT CAPACITY OF STAKES.
2. UPRIGHTS MAY BE ADJUSTABLE FROM 7'-0" TO 10'-0".

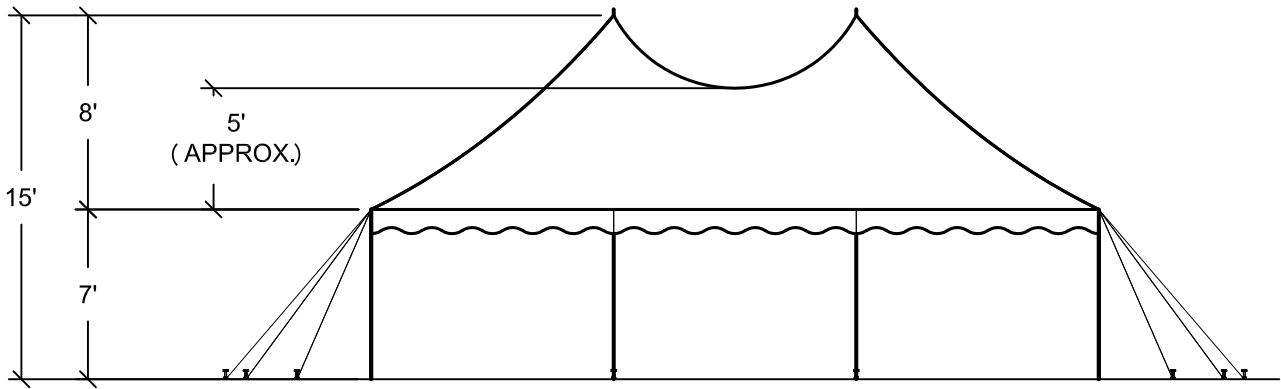
Caution:
Staking or anchoring is the responsibility of the installer. Soil conditions will dictate the number of stakes or anchors required. **Do not use this drawing to determine staking requirements.** Contact Anchor for Engineering loading data that can be used in conjunction with IFAI methodologies to determine site specific anchoring requirements.

REVISIONS		
EC/PR NO.	DATE	BY
1	10-01-2015	DMK
2	03-02-2016	DMK

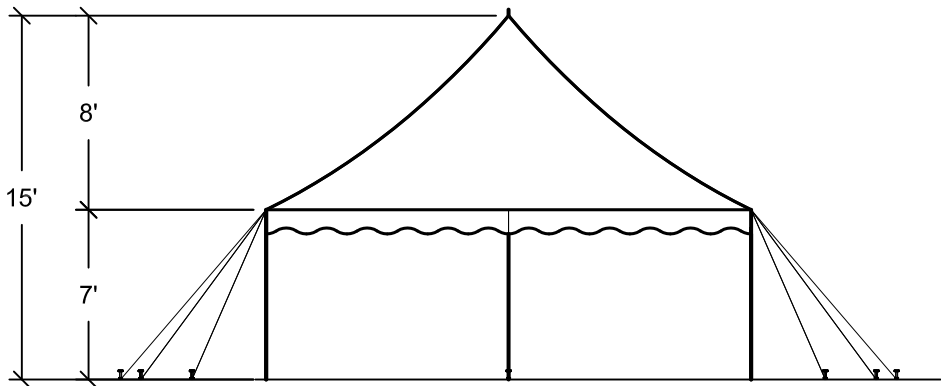
ANCHOR INDUSTRIES INC.		
BROCHURE DRAWING 20' SQ. ONE-PIECE CENTURY MATE		
DRAWN BY: DMK	CHECKED BY:	DRAWING NO.
APPROVED BY:	EC/PR NO.	DATE: 07-28-08
		08-401-1-1



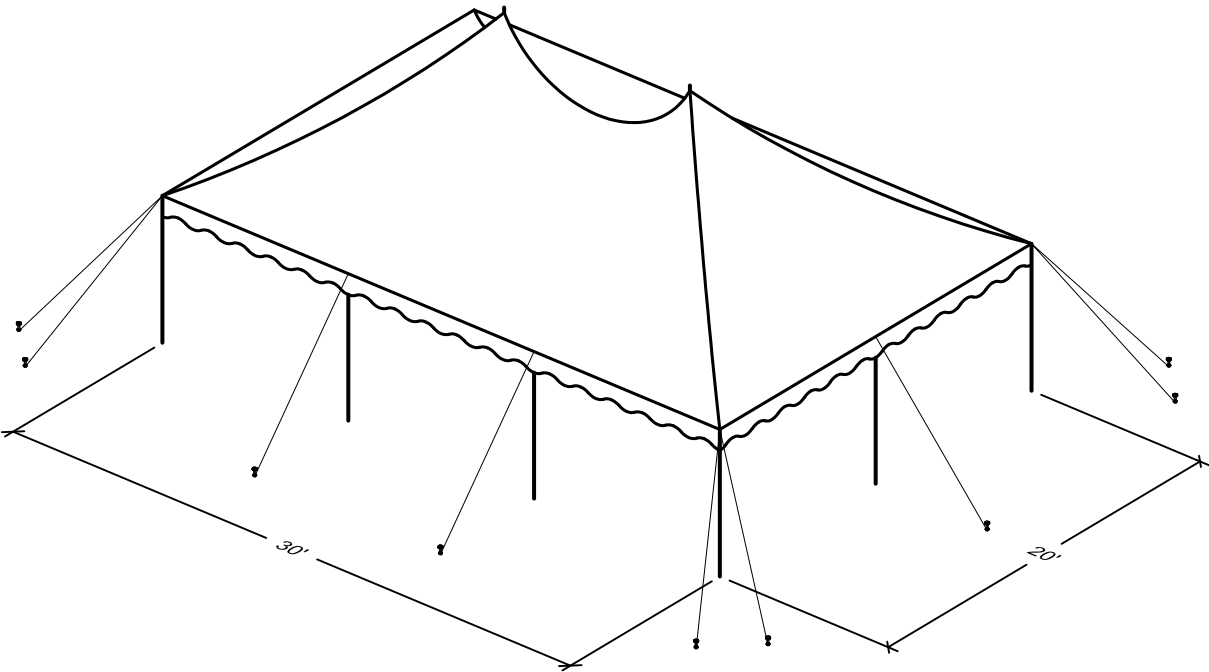
PLAN



SIDE ELEVATION



END ELEVATION



ISOMETRIC

- 20' x 30' (1) PC. TENT - 600 SQ. FT.
- (10) SIDE POLES
 - (2) CENTER POLES
 - (14) 1" WEB GUYS WITH RATCHETS
 - (14) 1" x 30" STAKES

NOTES:

1. SEE THE I.F.A.I. STAKING GUIDE ON OUR WEBSITE (WWW.ANCHORINC.COM) FOR SOIL IDENTIFICATION & PULL-OUT CAPACITY OF STAKES.



Caution:

Staking or anchoring is the responsibility of the installer. Soil conditions will dictate the number of stakes or anchors required. **Do not use this drawing to determine staking requirements.** Contact Anchor for Engineering loading data that can be used in conjunction with IFAI methodologies to determine site specific anchoring requirements.

REVISIONS

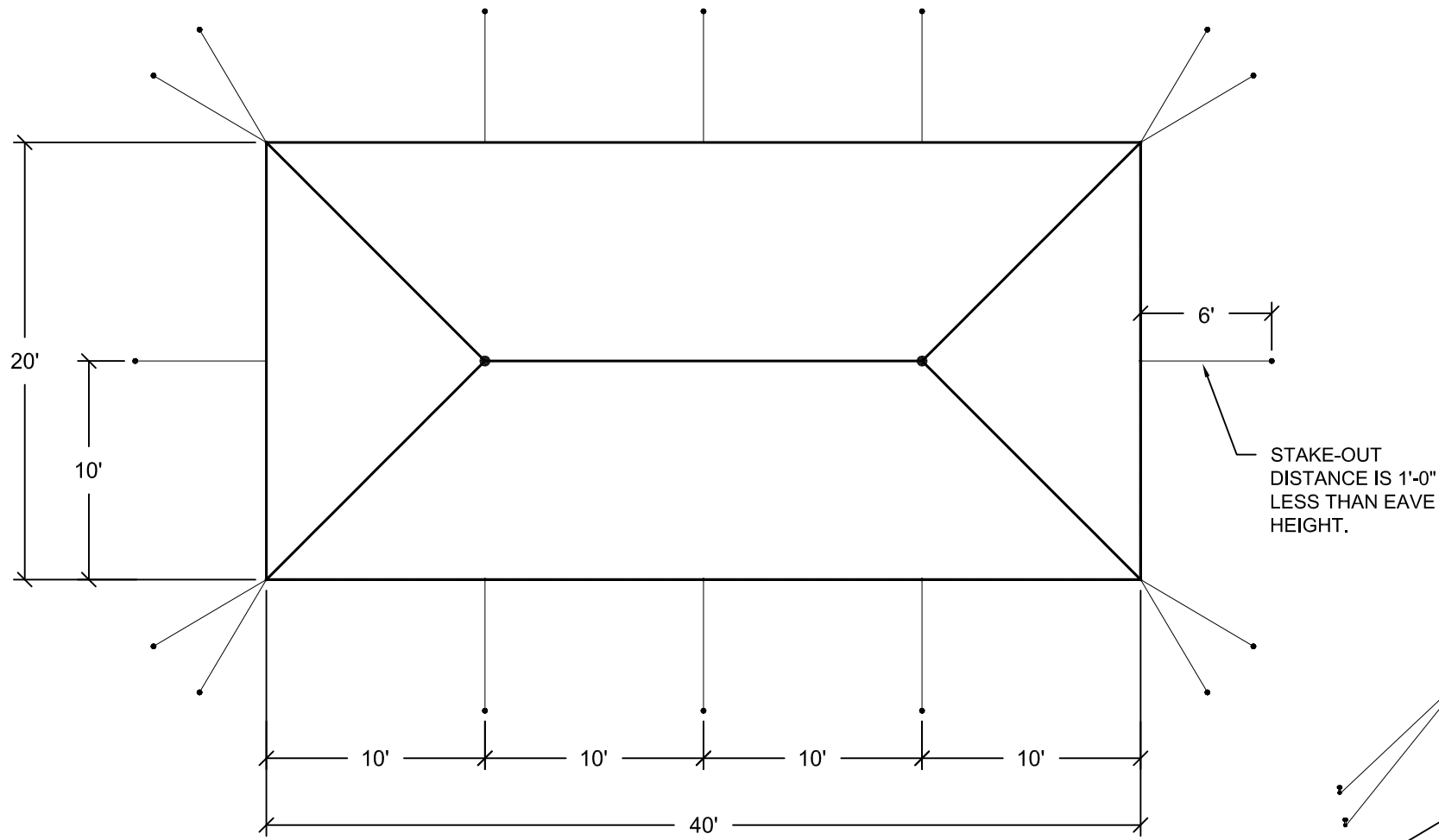
EC/PR NO.	DATE	BY
1	10-1-2015	DMK

ANCHOR INDUSTRIES INC.

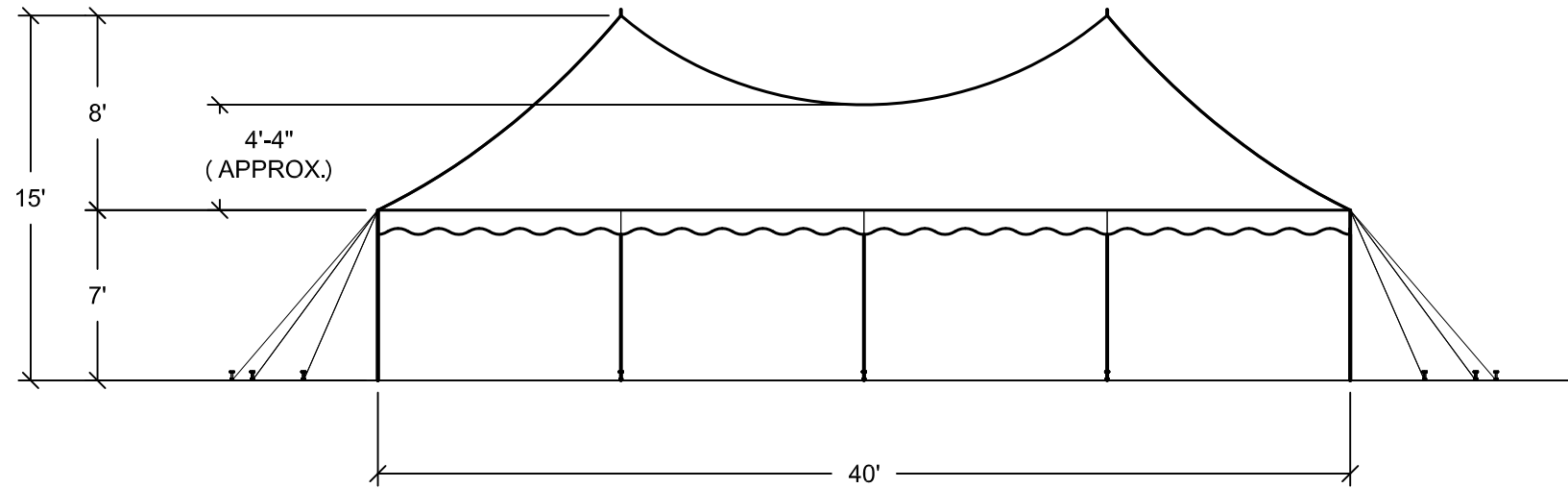
BROCHURE DRAWING
20' x 30' ONE-PIECE CENTURY MATE

DRAWN BY: DMK	CHECKED BY:	DRAWING NO.
APPROVED BY:	EC/PR NO.	DATE: 07-28-08
		08-401-1-2

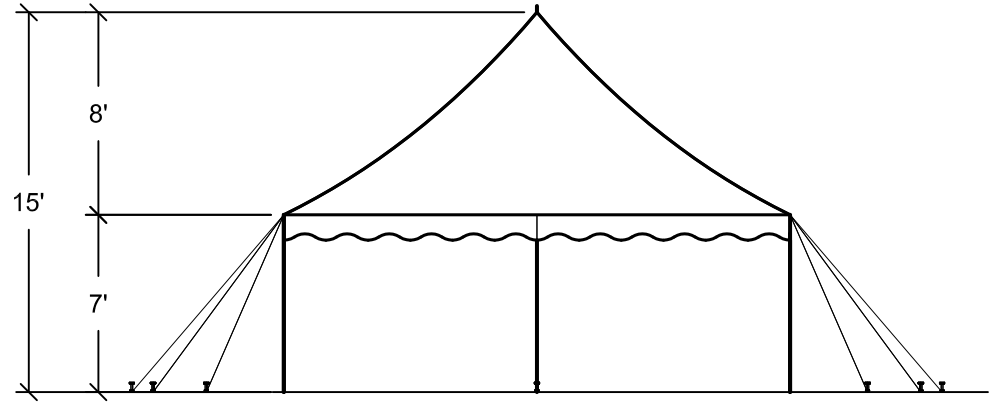
J:\Brochure Drawings\Century Mate\H-line custom\08-401-1-3.dwg, 3/2/2016 2:27:31 PM, Adobe PDF



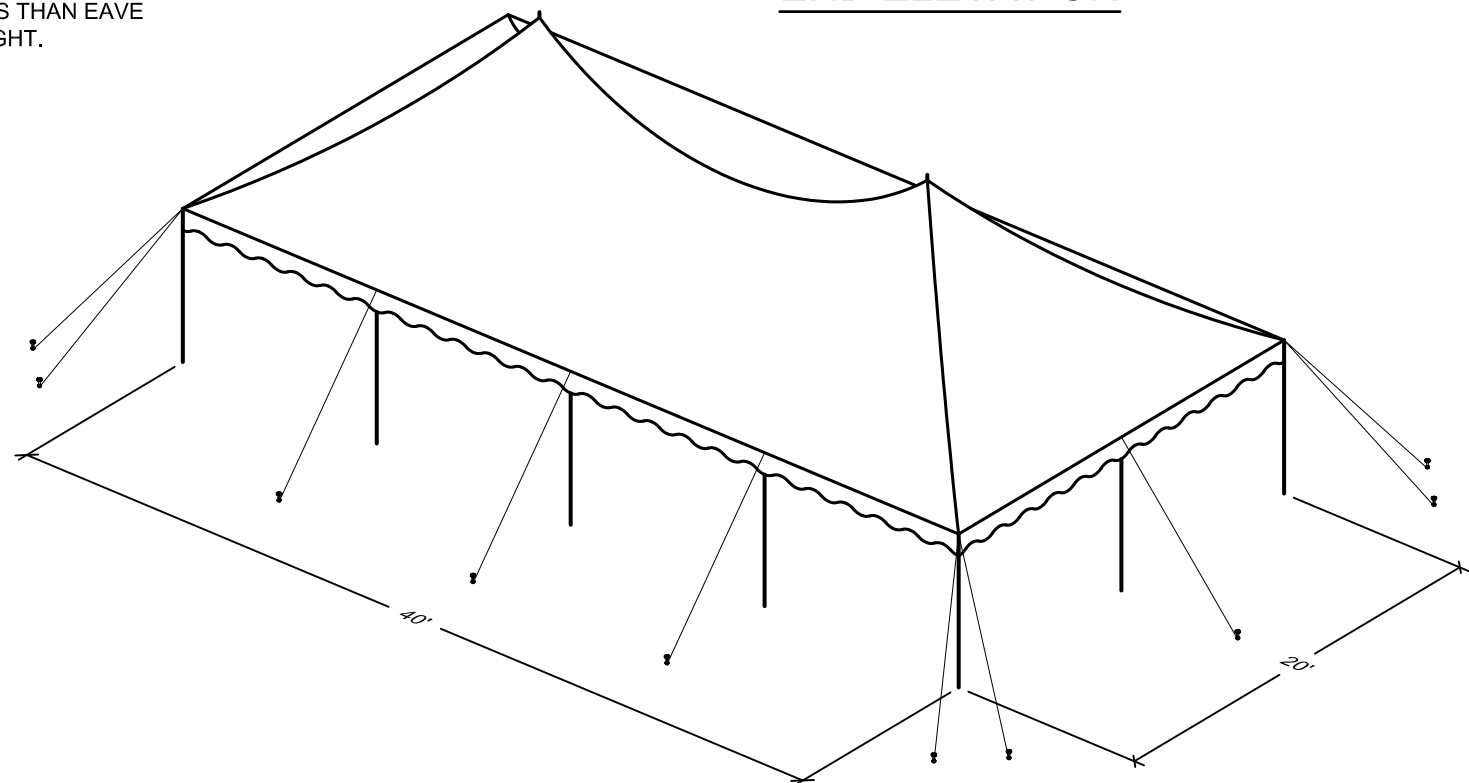
PLAN



SIDE ELEVATION



END ELEVATION



ISOMETRIC

- 20' x 40' (1) PC. TENT - 800 SQ. FT.
- (12) SIDE POLES
 - (2) CENTER POLES
 - (16) 1" WEB GUYS WITH RATCHETS
 - (16) 1" x 30" STAKES

NOTES:

1. SEE THE I.F.A.I. STAKING GUIDE ON OUR WEBSITE (WWW.ANCHORINC.COM) FOR SOIL IDENTIFICATION & PULL-OUT CAPACITY OF STAKES.

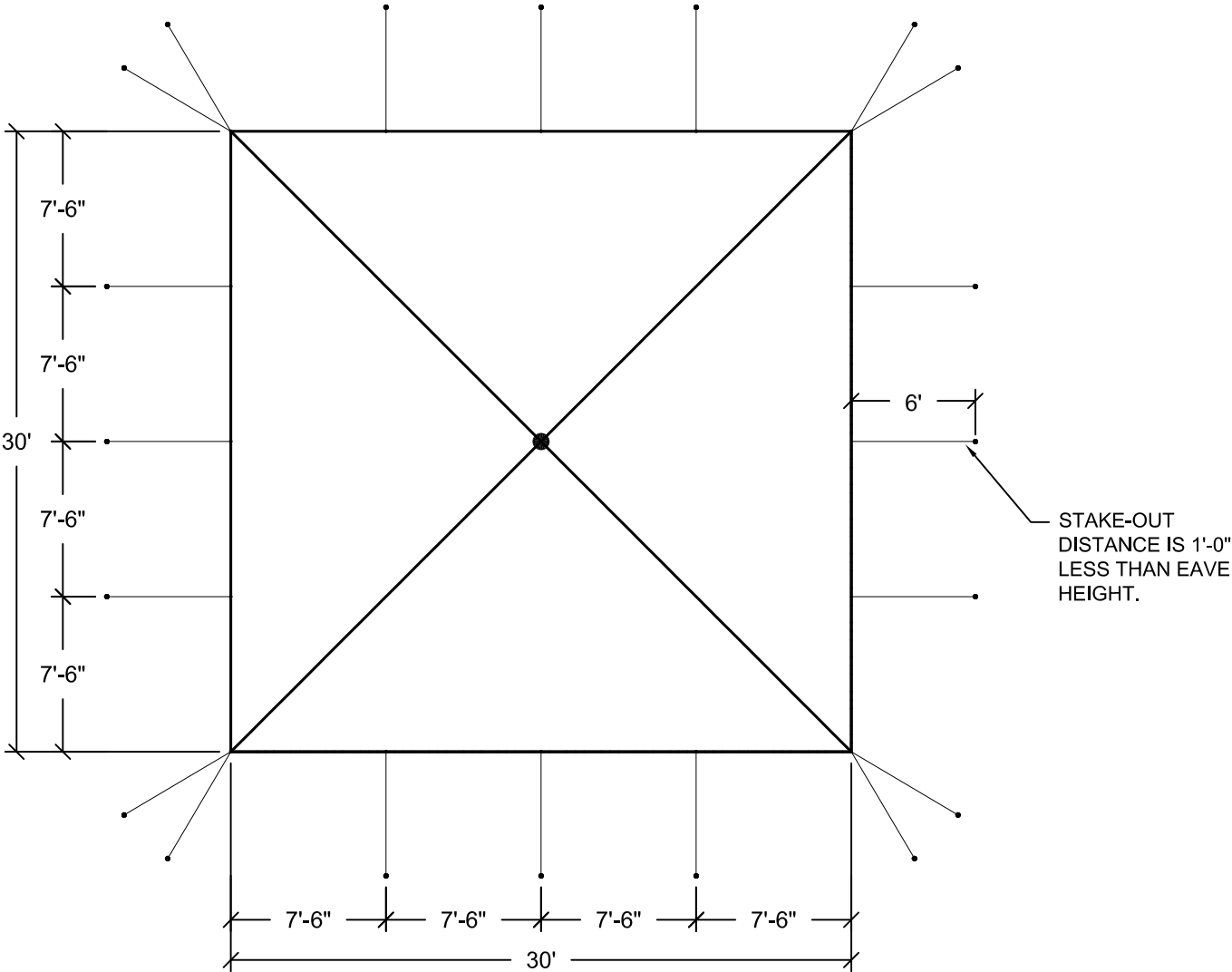
2

Caution:

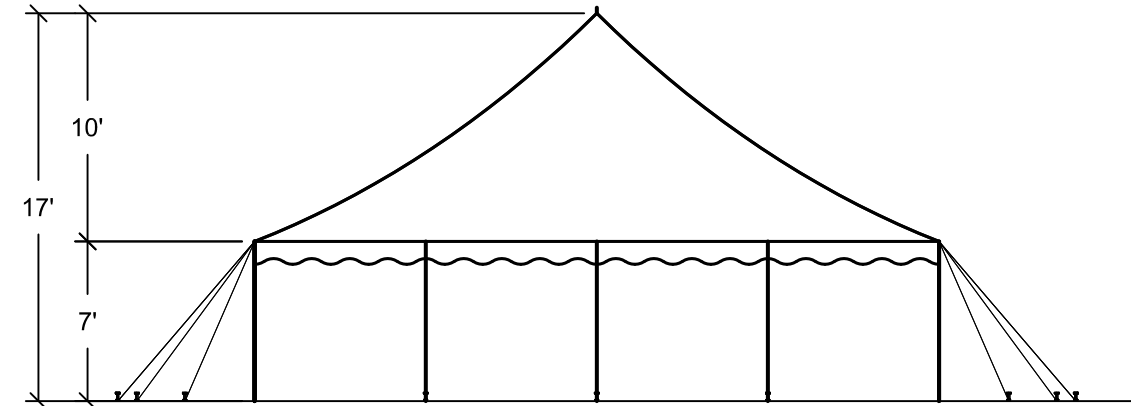
Staking or anchoring is the responsibility of the installer. Soil conditions will dictate the number of stakes or anchors required. **Do not use this drawing to determine staking requirements.** Contact Anchor for Engineering loading data that can be used in conjunction with IFAI methodologies to determine site specific anchoring requirements.

REVISIONS		
EC/PR NO.	DATE	BY
1	10-02-2015	DMK
2	03-02-2016	DMK

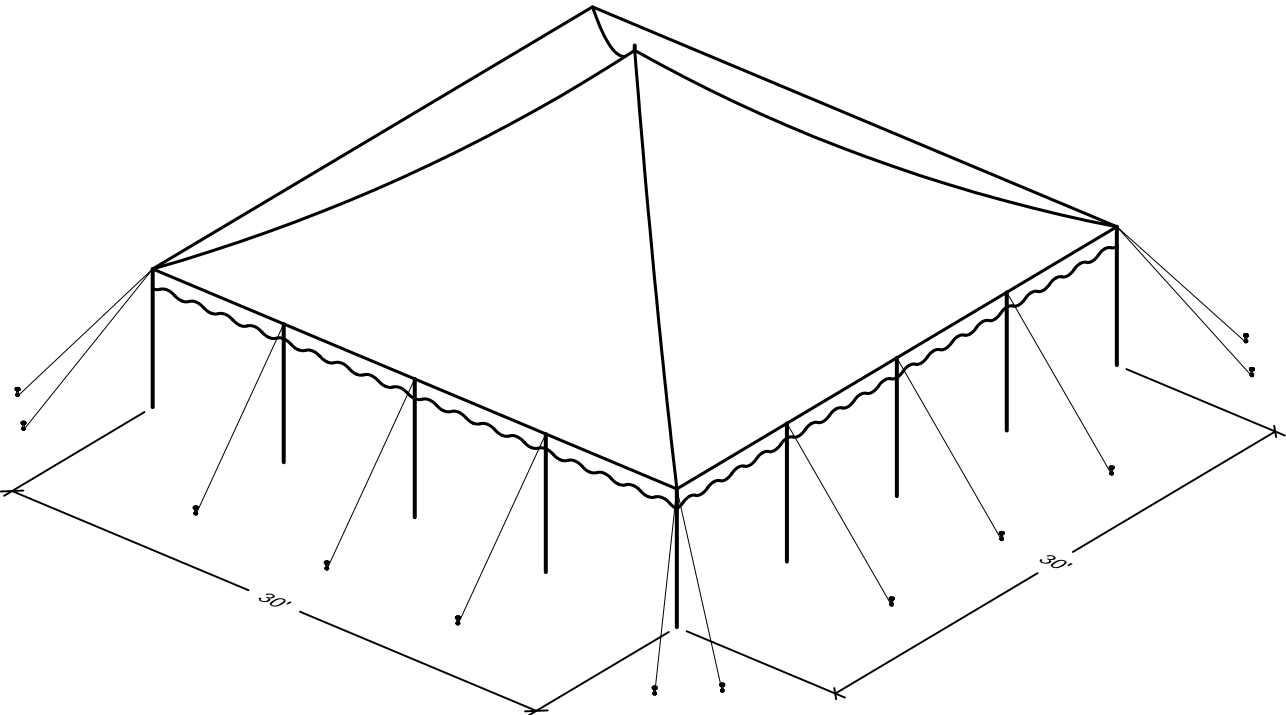
ANCHOR INDUSTRIES INC.			
BROCHURE DRAWING			
20' x 40' ONE-PIECE CENTURY MATE			
DRAWN BY: DMK		CHECKED BY:	
APPROVED BY:		EC/PR NO.	DATE: 07-28-08
DRAWING NO.			08-401-1-3



PLAN



SIDE ELEVATION



ISOMETRIC

- 30' x 30' (1) PC. TENT - 900 SQ. FT.
- (16) SIDE POLES
 - (1) CENTER POLE
 - (20) 1" WEB GUYS WITH RATCHETS
 - (20) 1" x 30" STAKES

NOTES:

1. SEE THE I.F.A.I. STAKING GUIDE ON OUR WEBSITE (WWW.ANCHORINC.COM) FOR SOIL IDENTIFICATION & PULL-OUT CAPACITY OF STAKES.



Caution:

Staking or anchoring is the responsibility of the installer. Soil conditions will dictate the number of stakes or anchors required. **Do not use this drawing to determine staking requirements.** Contact Anchor for Engineering loading data that can be used in conjunction with IFAI methodologies to determine site specific anchoring requirements.

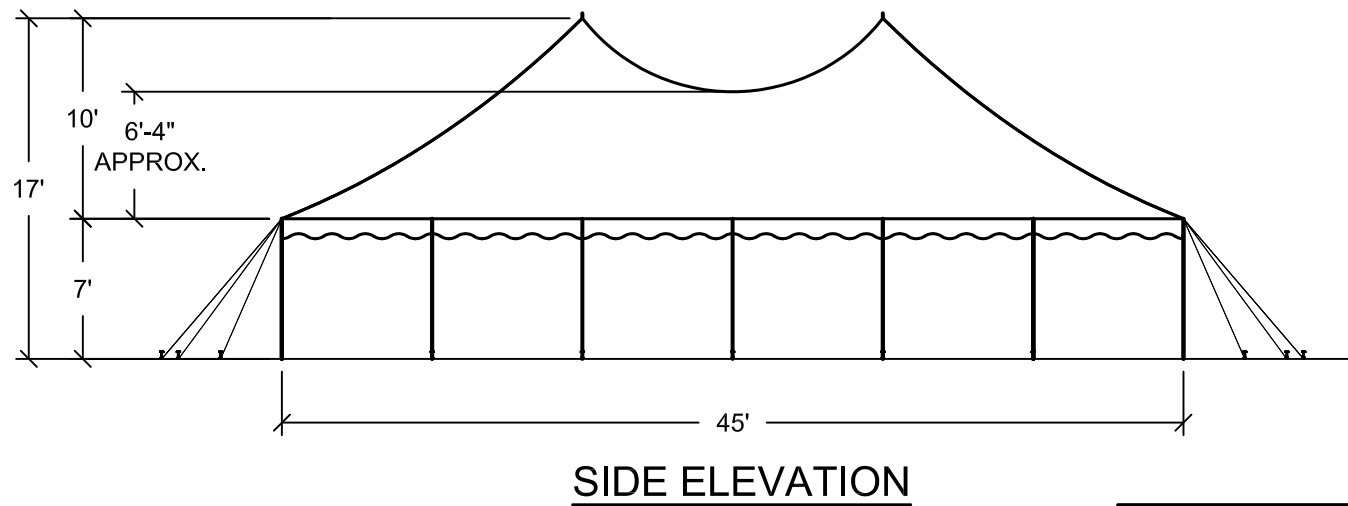
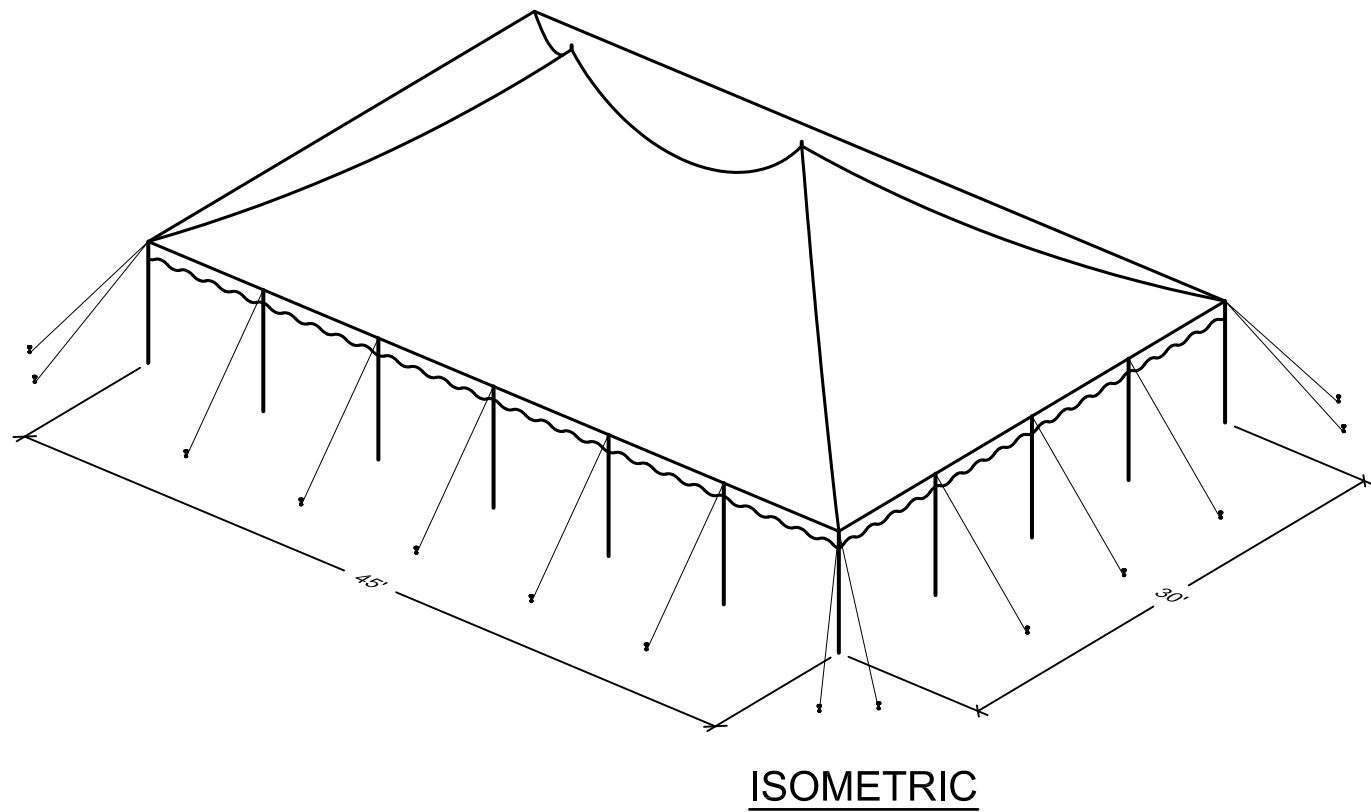
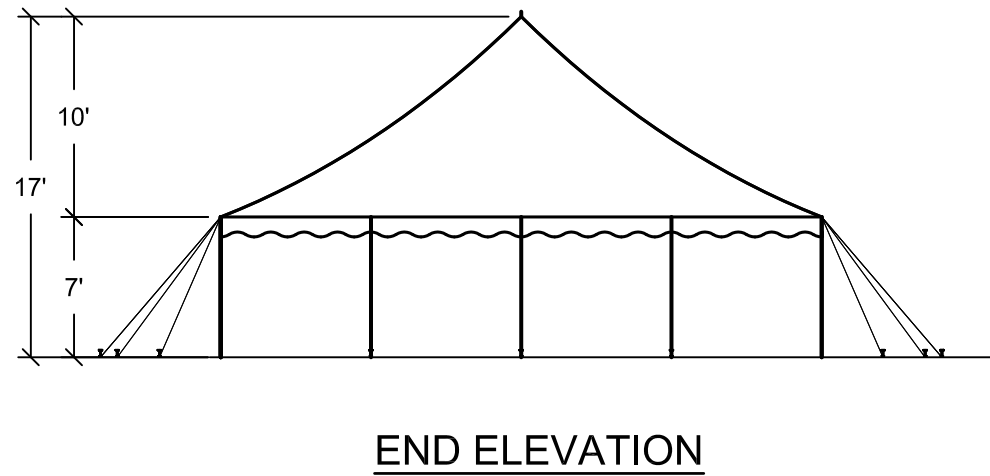
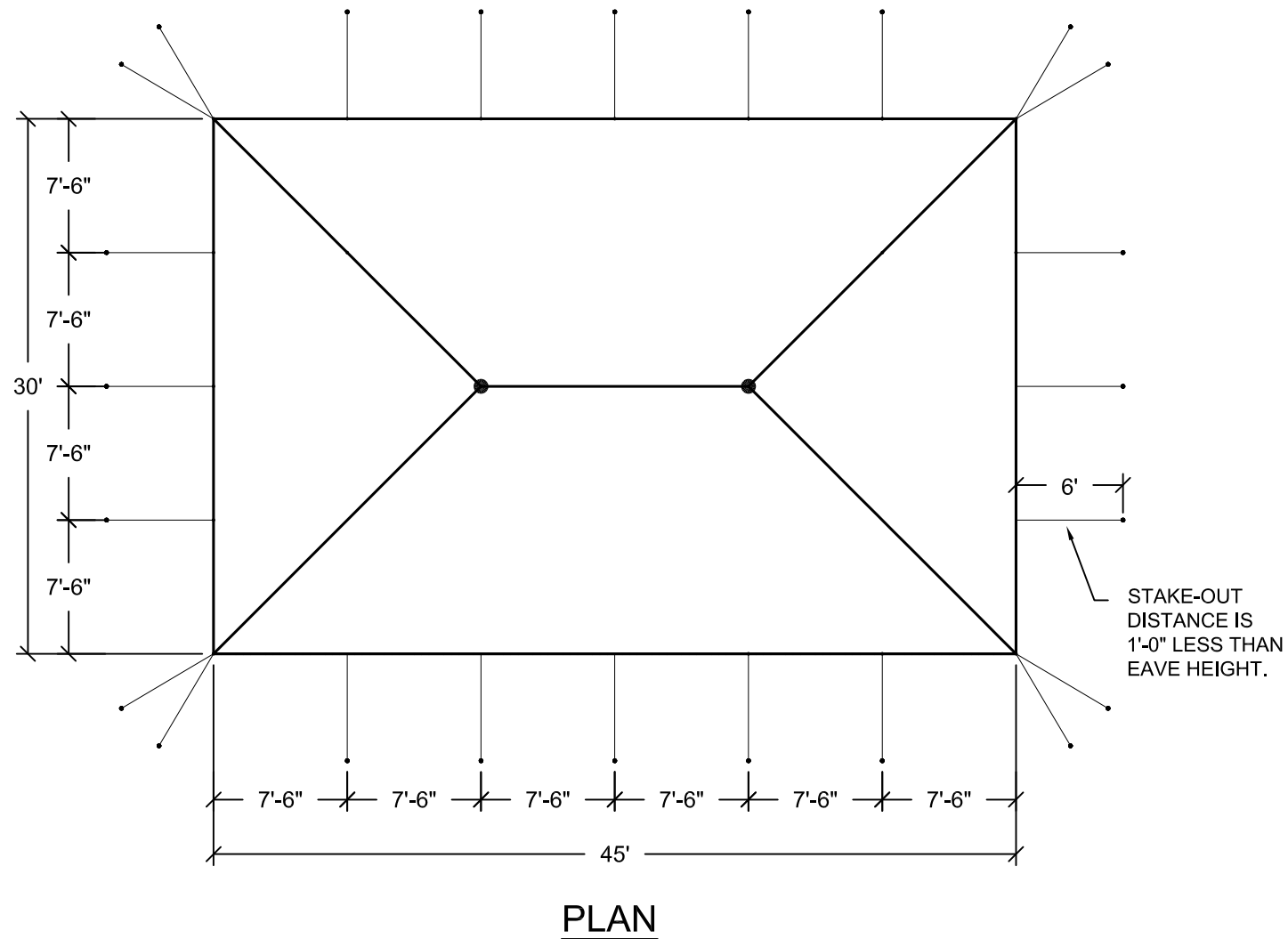
REVISIONS

EC/PR NO.	DATE	BY
1	10-2-2015	DMK
2	03-02-2016	DMK

ANCHOR INDUSTRIES INC.

BROCHURE DRAWING
30' SQ. ONE-PIECE CENTURY MATE

DRAWN BY: DMK	CHECKED BY:	DRAWING NO.
APPROVED BY:	EC/PR NO.	DATE: 07-28-08
		08-401-1-4



- 30' x 45(1) PC. TENT - 1,350 SQ. FT.
- (20) SIDE POLES
 - (2) CENTER POLES
 - (24) 1" WEB GUYS WITH RATCHETS
 - (24) 1" x 30" STAKES

NOTES:

1. SEE THE I.F.A.I. STAKING GUIDE ON OUR WEBSITE (WWW.ANCHORINC.COM) FOR SOIL IDENTIFICATION & PULL-OUT CAPACITY OF STAKES.



Caution:

Staking or anchoring is the responsibility of the installer. Soil conditions will dictate the number of stakes or anchors required. **Do not use this drawing to determine staking requirements.** Contact Anchor for Engineering loading data that can be used in conjunction with IFAI methodologies to determine site specific anchoring requirements.

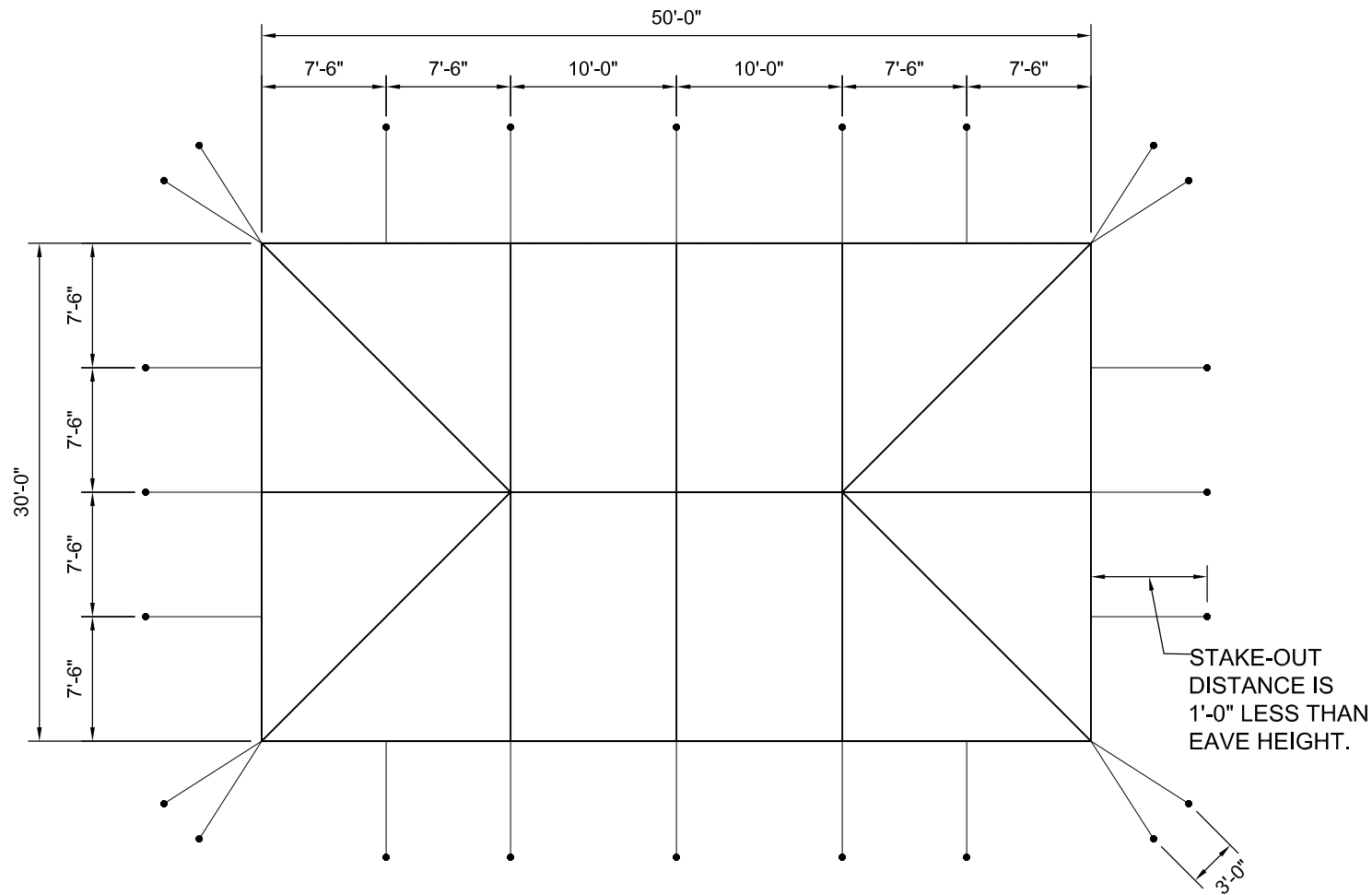
REVISIONS

EC/PR NO.	DATE	BY
1	10-02-2015	DMK
2	03-02-2016	DMK

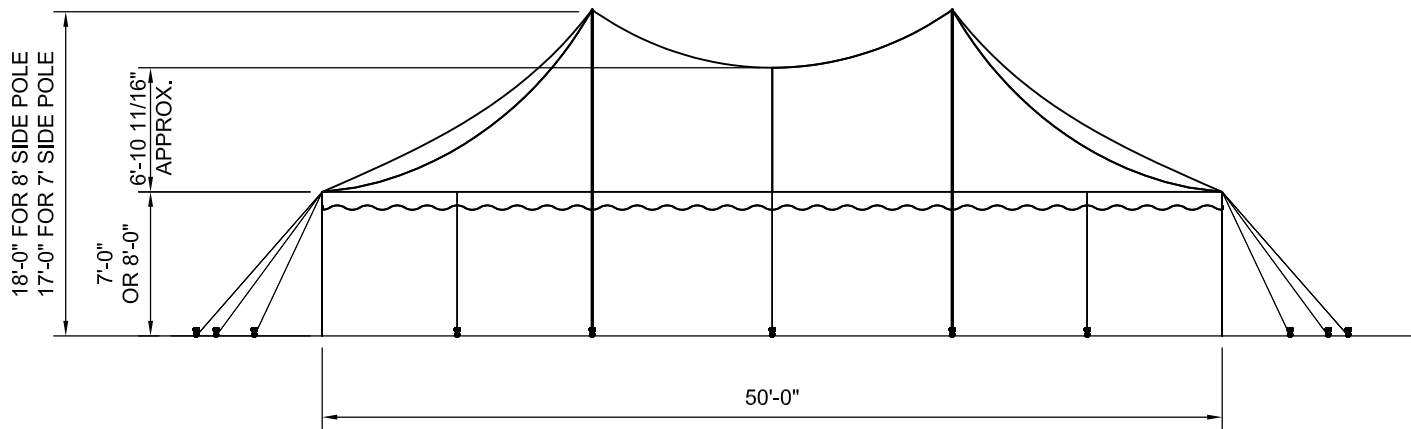
ANCHOR INDUSTRIES INC.

BROCHURE DRAWING
30' x 45' ONE-PIECE CENTURY MATE

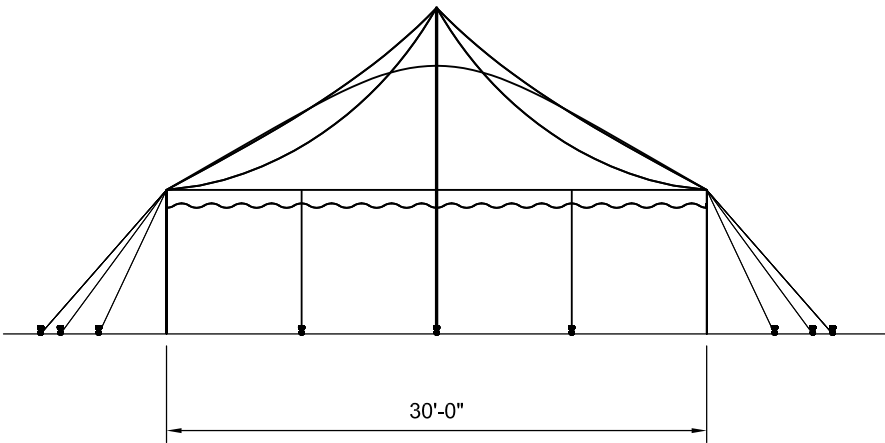
DRAWN BY: DMK	CHECKED BY:	DRAWING NO.
APPROVED BY:	EC/PR NO.	DATE: 07-28-08
		08-401-1-5



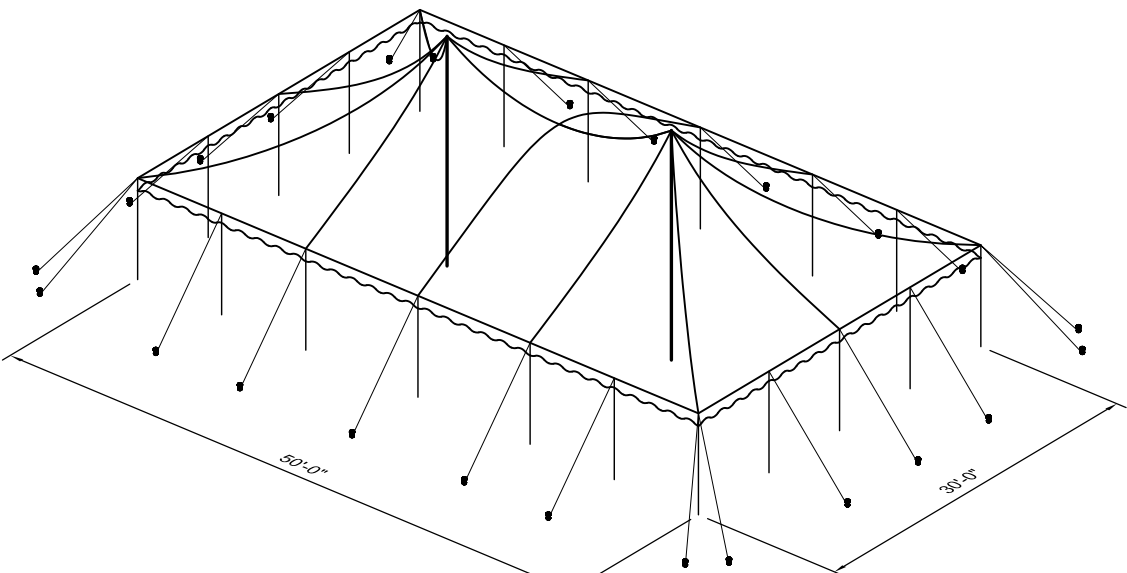
PLAN VIEW



SIDE VIEW



END VIEW



ISOMETRIC

- 30' x 50' (1) PC. TENT - 1,500 SQ. FT.
- (20) SIDE POLES
 - (2) CENTER POLES
 - (24) 1" WEB GUYS WITH RATCHET
 - (24) 1" x 30" STAKES

NOTES:

1. SEE THE I.F.A.I. STAKING GUIDE ON OUR WEBSITE (WWW.ANCHORINC.COM) FOR SOIL IDENTIFICATION & PULL-OUT CAPACITY OF STAKES.

Caution:
Staking or anchoring is the responsibility of the installer. Soil conditions will dictate the number of stakes or anchors required. **Do not use this drawing to determine staking requirements.** Contact Anchor for Engineering loading data that can be used in conjunction with IFAI methodologies to determine site specific anchoring requirements.



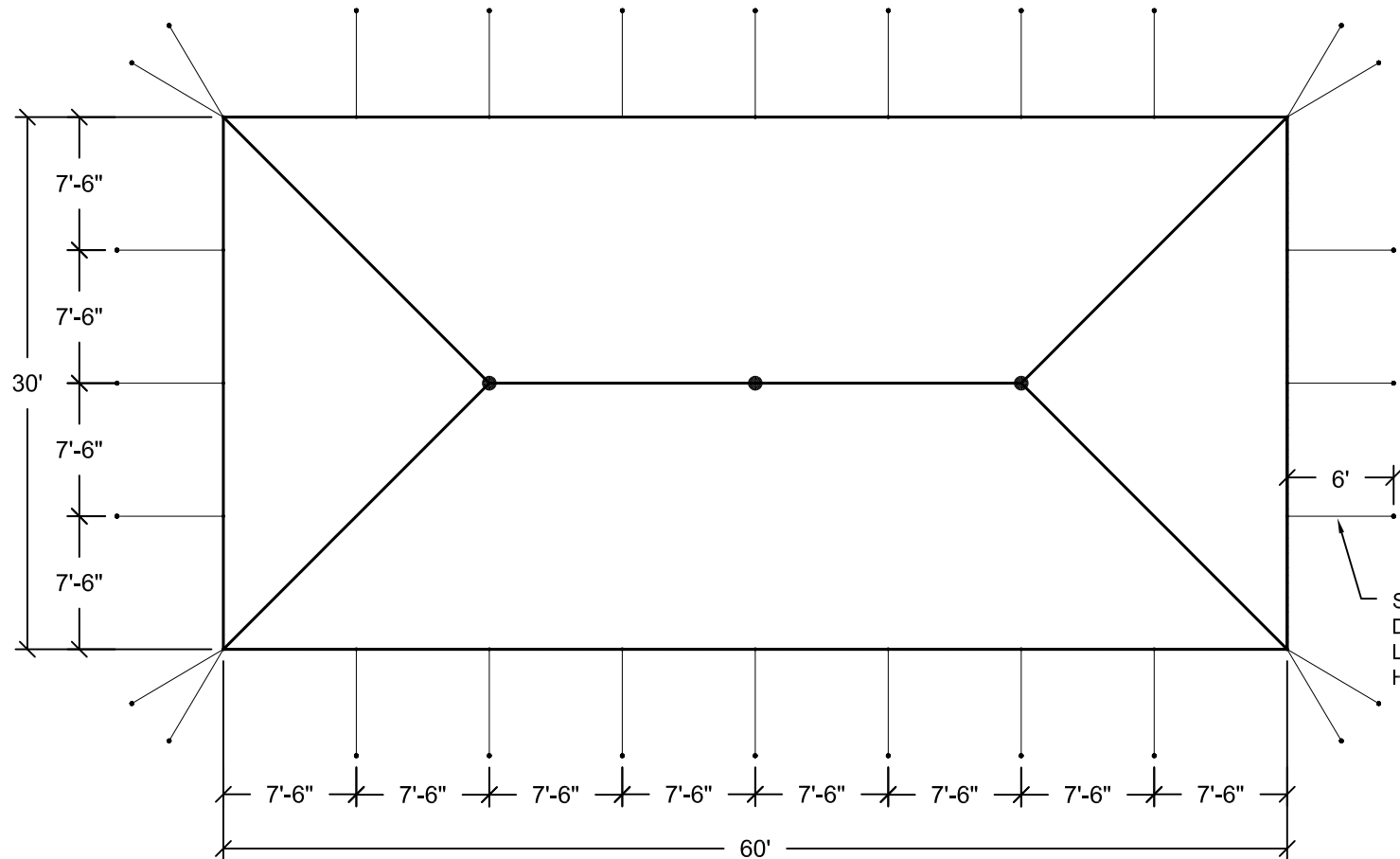
All data and information contained in or disclosed by this document is confidential and proprietary information of Anchor Industries, Inc. and all rights therein are expressly reserved. By accepting this material the recipient agrees that this material and the information contained therein is held in confidence and in trust and will not be used, copied, reproduced in the whole or in part, nor its contents revealed in any manner to others except to meet the specific purpose for which it was delivered.

BROCHURE DRAWING

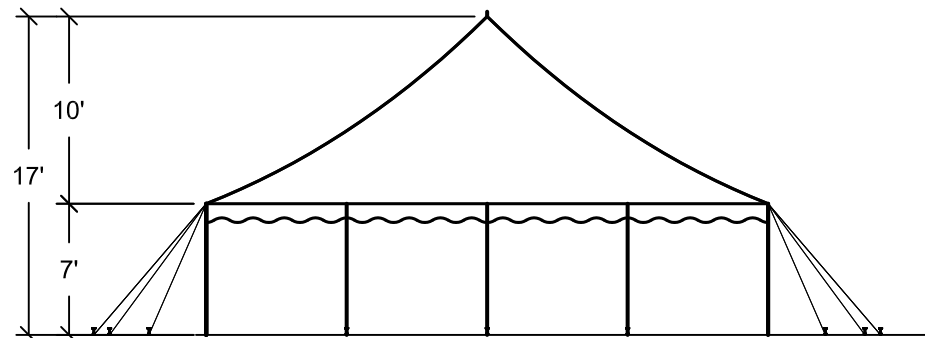
30' x 50' 1 PC. CENTURY MATE

REV	EC	DATE	BY
REVISION HISTORY			

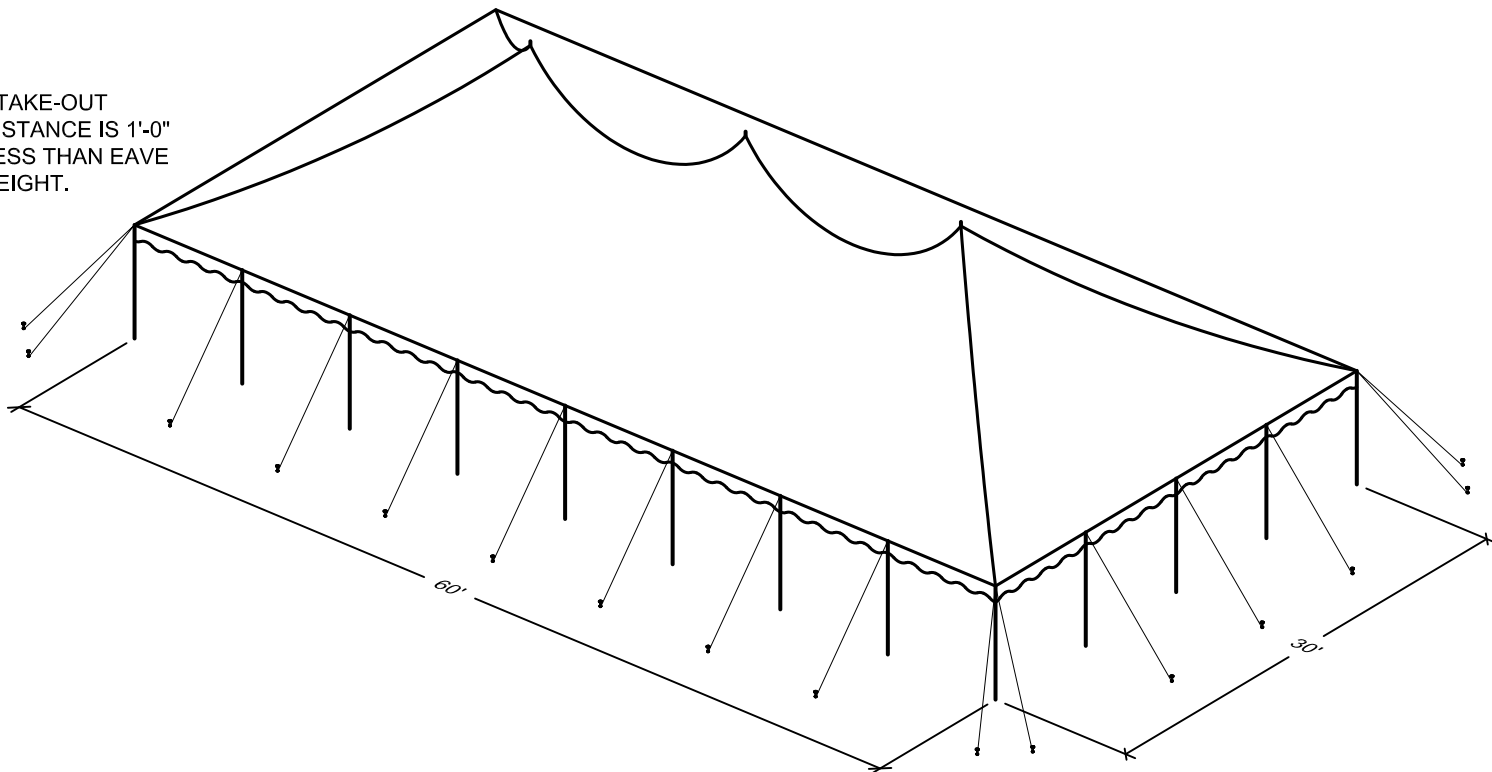
DRAWN BY:	DMK	CHECKED BY:		DRAWING NO.
APPROVED BY:	EC#	DATE:	03-14-2016	16-192



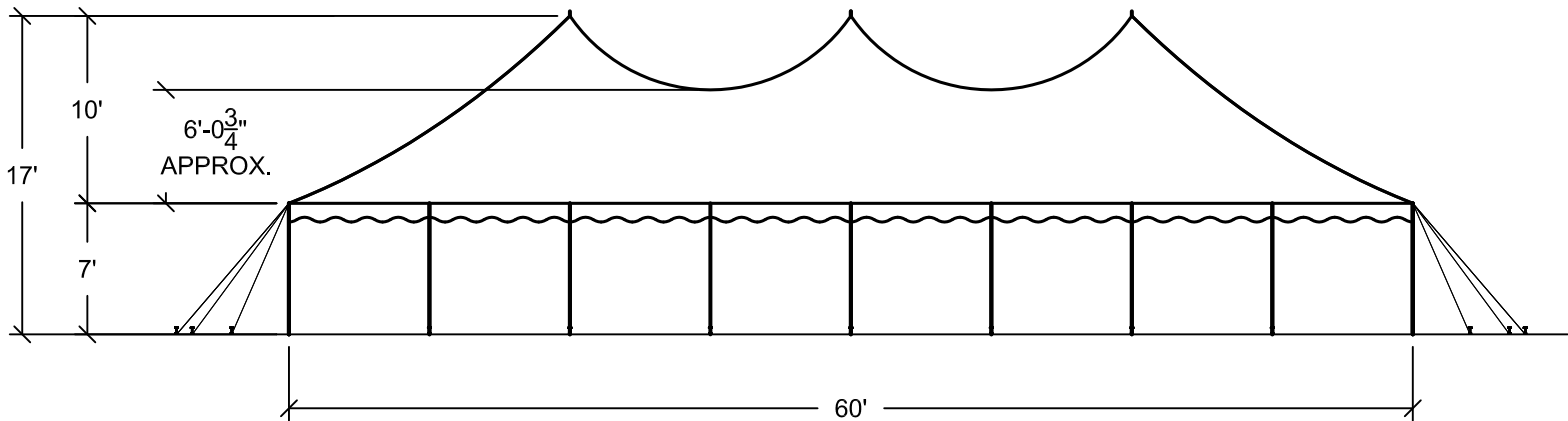
PLAN



END ELEVATION



ISOMETRIC



SIDE ELEVATION

STAKE-OUT
DISTANCE IS 1'-0"
LESS THAN EAVE
HEIGHT.

- 30' x 60' (1) PC. TENT - 1,800 SQ. FT.
- (24) SIDE POLES
 - (3) CENTER POLES
 - (28) 1" WEB GUYS WITH RATCHETS
 - (28) 1" x 30" STAKES

NOTES:

1. SEE THE I.F.A.I. STAKING GUIDE ON OUR WEBSITE (WWW.ANCHORINC.COM) FOR SOIL IDENTIFICATION & PULL-OUT CAPACITY OF STAKES.

Caution:

Staking or anchoring is the responsibility of the installer. Soil conditions will dictate the number of stakes or anchors required. **Do not use this drawing to determine staking requirements.** Contact Anchor for Engineering loading data that can be used in conjunction with IFAI methodologies to determine site specific anchoring requirements.

2

REVISIONS

EC/PR NO.	DATE	BY
1	10-02-2015	DMK
2	03-02-2016	DMK

ANCHOR INDUSTRIES INC.

BROCHURE DRAWING
30' x 60' ONE-PIECE CENTURY MATE

DRAWN BY:
DMK

CHECKED BY:

DRAWING NO.

APPROVED BY:

EC/PR NO.

DATE:
07-29-08

08-401-1-6